



# ZANETTO

HANDMADE IN ITALY

GENERAL CATALOGUE





# ZANETTO

HANDMADE IN ITALY



## GROWERS OF BEAUTY

since 1963



**Tradition of superior craftsmanship**

ZANETTO

# SUPERIOR HANDICRAFT CREATIONS FROM NOBLE METALS

ZANETTO IS AN ITALIAN CRAFTSMANSHIP LABORATORY, DEDICATED TO THE CREATION OF SILVER AND PRECIOUS METALS ART OBJECTS FOR ROOM AND TABLE DECORATION.

ZANETTO È UN LABORATORIO ITALIANO DI ALTO ARTIGIANATO, DEDITO ALLA CREAZIONE DI OGGETTI ARTISTICI IN ARGENTO E LEGHE NOBILI PER LA DECORAZIONE DEGLI AMBIENTI E PER LA TAVOLA.

## INDEX

Zanetto

Mission

Quality

Design

Pattern And Finishing

Products

# ZANETTO

## workshop

Founded in **1963**, the company boasts more than fifty years of experience and makes use of the most talented Italian workers in the silver sector to produce innovative objects featuring a sophisticated design.

By skilfully combining the most **traditional work methods** with the most **original artisanal endeavours**, the company creates alluring, high-quality works that can decorate any setting and satisfy those who love to surround themselves with priceless and timeless values, like **beauty** and **harmony**.

Like every company, **Zanetto** is a reflection of the people who created it and who experience it, reinvent it and help it grow every day.

The company's history is therefore entwined with that of its founder, **Bernardo Zanetto**, and his son, **Enrico**, who is currently committed to steering the company towards international objectives and developing its international aspects. Today, the workshop has about 15 in-house employees and ten external collaborators, all of whom complete a training and learning period of more than five years.

The Zanetto production philosophy involves maintaining the artisanal character of its products, convinced that hand production provides a unique and absolute guarantee to achieving exceptional quality and original workmanship. Traditional techniques and ancient secrets are maintained and reinvented to create contemporary objects that strive for **simplicity** and **balance**.

*Nato nel 1963, vanta oltre cinquant'anni di esperienza e si avvale delle più dotate maestranze italiane del settore argentero per dar vita a oggetti innovativi e di ricercato design. Dalla sapiente unione delle più **tradizionali tecniche lavorative** con le più **originali sperimentazioni artigianali**, nascono opere di alto tenore qualitativo ed estetico, per impreziosire ogni contesto e appagare chi ama circondarsi di valori inestimabili e senza tempo, come **Bellezza** ed **Equilibrio**.*

*Come ogni azienda, **Zanetto** è lo specchio delle persone che l'hanno creata e che ogni giorno la vivono, la reinventano e la fanno crescere.*

*La sua storia, dunque, è quella del suo fondatore, **Bernardo Zanetto** e di suo figlio **Enrico**, che oggi la dirige con dedizione verso obiettivi e dimensioni sempre più internazionali. Oggi il laboratorio impiega al proprio interno circa quindici collaboratori, affiancati da una decina all'esterno, tutti sottoposti a periodi di formazione e apprendimento ben oltre i cinque anni.*

*Zanetto ha scelto come filosofia produttiva il coerente mantenimento della caratterizzazione artigianale, convinto che le lavorazioni manuali siano unica e assoluta garanzia per il raggiungimento di elevata qualità e originalità esecutiva. Le tecniche e i segreti antichi vengono conservati e rinnovati per dar vita a oggetti contemporanei, perseguendo i valori della **semplicità** e dell'**equilibrio**.*

# MISSION

OUR MISSION IS INTERWOVEN WITH SOCIAL RESPONSIBILITY AND SOLIDIFIES IN WHAT WE CALL AN

## ETHIC OF RESPECT.

First and foremost, this ethic is based on respect for the Earth and its not-unlimited resources: Our craftsmanship is based on “responsible” luxury, arising from a commitment to create and offer “beautiful works with significant intrinsic and aesthetic value”, without negatively impacting the surrounding environment or the survival of the planet. Our aim is to enrich and enhance metals by blending the best that man can express: craftsmanship and creativity. By laying down production logic along these lines, via a refusal to manufacture en masse and exalting unique objects crafted by hand, we have achieved a broader reaching and deeper concept of quality; a global quality, the aim of all at our forge.

The criterion that guides us along this path is the constant research for simplicity: this evokes ideas of pure, eternal harmony and well-being, to both liberate and satisfy the spirit. This effort to interpret simplicity requires a special commitment, as simple contours and pure form need to achieve a perfect balance. Thus BALANCE is our measure, reflected, restored and transfigured by the LIGHT of silver. The very light I like to think of as a gift within each of the articles produced by our workshop.



LA NOSTRA MISSION È INTESSUTA NELLA RESPONSABILITÀ SOCIALE E SI REALIZZA IN QUELLA CHE NOI DEFINIAMO  
**ETICA DEL RISPETTO.**

*Questa etica si sostanzia, anzitutto, nel rispetto per la Terra e per le sue risorse non illimitate: Il nostro è un artigianato di lusso “consapevole”, che nasce dall’impegno nel creare e proporre “opere di alto valore intrinseco ed estetico” senza incidere negativamente sull’equilibrio dell’ambiente che ci circonda e sulla sopravvivenza del pianeta Il nostro intento è quello di arricchire ed elevare la materia metallo attraverso la congiunzione con quanto di meglio può esprimere l’uomo: la maestria e la creatività. Conformare la logica produttiva a queste idee, passando attraverso il rifiuto delle produzioni di serie, esaltando l’oggetto unico, in quanto lavorato a mano, coincide con un concetto di qualità ampio e profondo, una qualità globale, che è obiettivo condiviso da tutti nella nostra fucina.*

*Cercare di interpretare la semplicità esige un impegno particolare, in quanto una linea semplice, una forma pura, deve possedere un equilibrio perfetto. L’EQUILIBRIO, dunque, è la nostra misura: specchiato, rimandato e trasfigurato dalla LUCE dell’argento, luce che mi piace pensare come dono racchiuso in ogni oggetto che esce dal nostro laboratorio.*

At Zanetto, hand production is viewed as an absolute guarantee of quality and original workmanship. Traditional techniques and ancient secrets are thereby maintained and reinvented to create contemporary objects that strive for simplicity and balance. Owning a Zanetto product therefore means enjoying a high-quality product. Thanks to our highly specialized and skilled master artisans, and continuous quality controls, we are able to produce objects made with the finest materials having uniform shapes, well-finished edges, perfect soldering without any residues, precise hammering and chiselling, completely smooth surfaces, and uniform, thick silver plating. The value of an object's design also contributes to its quality – each of our creations is the result of long study and continuous research regarding decorative surface finishes, technical innovation and the aesthetic value of the shapes. Production entirely by hand and an original style make every Zanetto product a precious and unique creation.

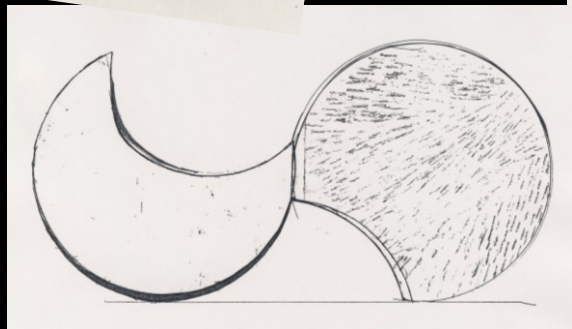
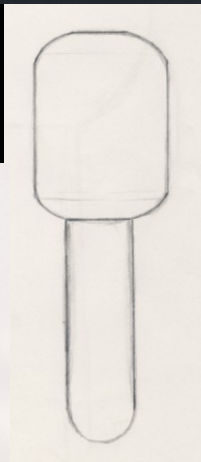
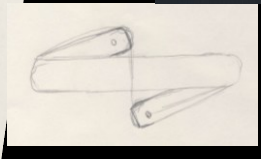
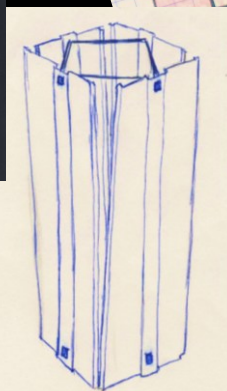
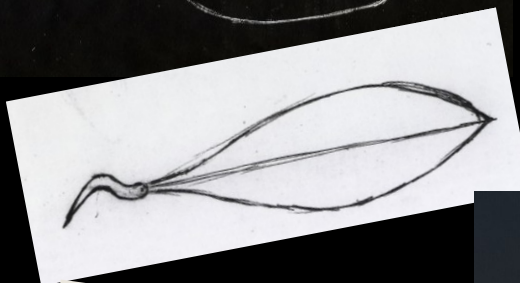
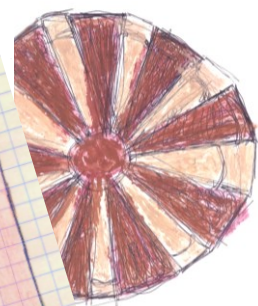
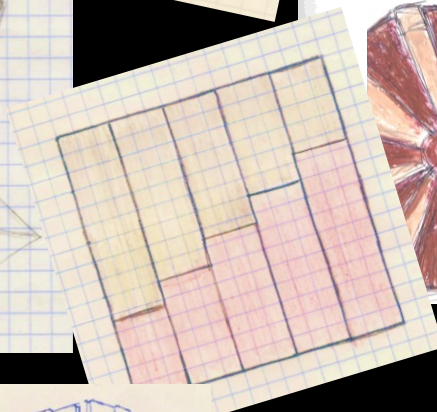
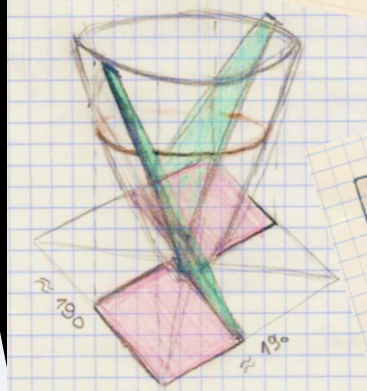
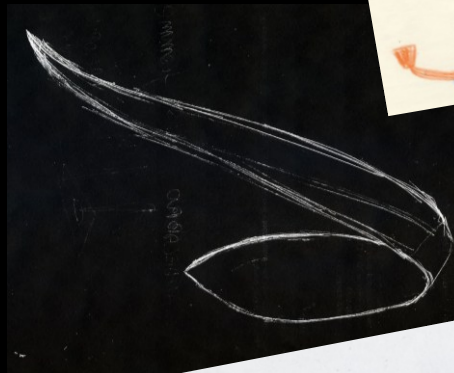
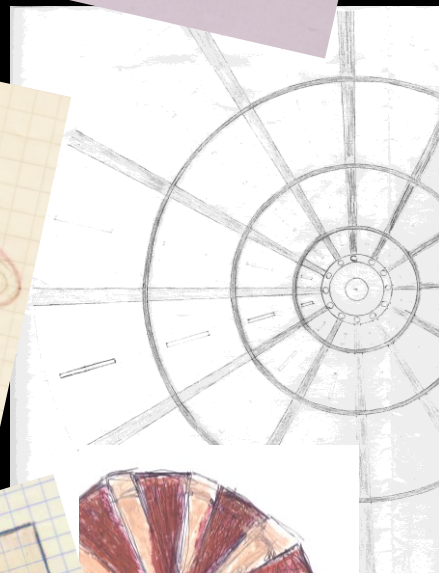
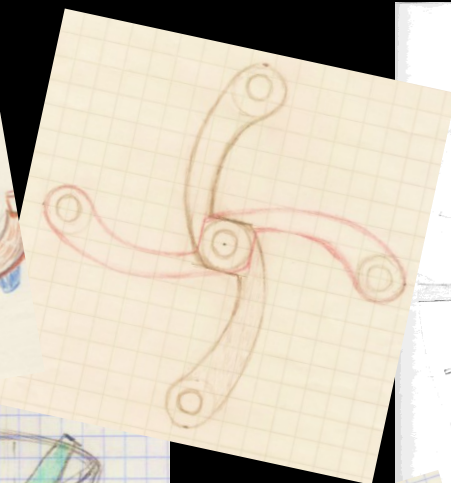
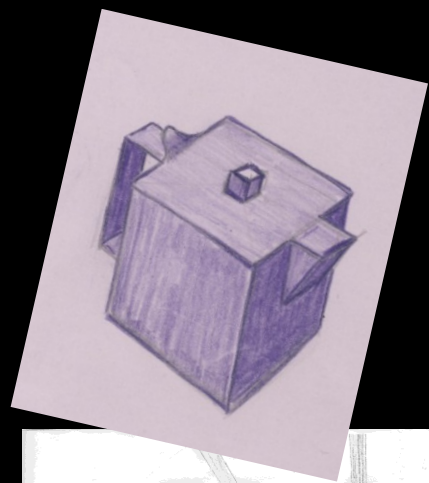
*La lavorazione manuale è per noi garanzia assoluta di qualità e originalità esecutiva. Le tecniche e i segreti antichi vengono così conservati e rinnovati per dar vita a oggetti contemporanei, perseguendo i valori della semplicità e dell'equilibrio. Possedere un manufatto Zanetto significa, quindi, godere di un prodotto di alta qualità. L'altissima specializzazione e capacità dei nostri maestri artigiani, assieme al meticoloso e costante controllo qualità, consentono l'ottenimento di oggetti con materiali di prima scelta, forme sbazzate in modo regolare, bordure ben rifinite, saldature a regola d'arte con eliminazione di ogni residuo, martellature e cesellature precise, superfici levigate in ogni punto, uniformi ed elevati depositi di argento. A determinare la qualità di un oggetto concorre anche il valore progettuale del suo disegno: ogni nostra creazione è il frutto di lunghi studi e costante ricerca sulle valenze estetiche delle forme, sulla finitura decorativa delle superfici, sull'innovazione delle tecniche. Lavorazioni totalmente manuali e originalità di segno fanno di ogni oggetto Zanetto una creazione preziosa e unica*



# DESIGN

## THE EXCEPTIONAL DESIGN OF ZANETTO'S CREATIONS CONTRIBUTES TO THEIR QUALITY AND EXQUISITENESS

Each work is the result of long study and continuous research regarding decorative surface finishes, technical innovation and the aesthetic value of the shapes. The design of each creation is the result of the creative inspiration of Bernardo and Enrico Zanetto. More specifically, since 2000, each creation has featured the style of Enrico Zanetto, who is responsible for the most revolutionary and modern experiments with the concept of silver.



A DETERMINARE LA  
PREZIOSITÀ E LA QUALITÀ  
DELLE CREAZIONI  
ZANETTO CONCORRE  
ANCHE IL VALORE  
PROGETTUALE DEL  
DISEGNO

Ogni opera è il frutto di lunghi studi e costante ricerca sulle valenze estetiche delle forme, sulla finitura decorativa delle superfici, sull'innovazione delle tecniche. Il design di ogni creazione è frutto dell'estro creativo di Bernardo e di Enrico Zanetto. In particolare, a partire dal 2000, ogni creazione porta il tratto di Enrico, autore delle sperimentazioni più rivoluzionarie e contemporanee sul concetto di argento.



## GROWERS OF BEAUTY

"I remember that almost every evening, at dinner, my father placed the prototype that he was working on at the centre of the table so that he could calmly examine its lines and volumes, looking for defects and ways to improve its overall harmony and balance. As a child, I looked at those objects, those fledgling creations, as though they were alive. I listened to their language speak of pride or gentleness and perceived their spirit.

Since then, I always wanted to create such objects.

And give them a spirit, so that they could express their own personality and language, speaking to the intimate essence, the spirit, of people. I learned that, for an object to have a spirit, it cannot be subjected to the slavery of serial production, to the alienation of repetition and the calamity of tedium, rather it must be a single and unique example, an expression of individuality. This result can only be achieved through production by hand, where its "defects" and "mistakes" make each object original rather than a copy, stimulating the creativity of the worker, freeing the object from pure functionality and exalting an expressiveness that awakens emotional responses, including by stimulating the senses with light, colour variations and the tactile properties of the surface. Instilled with this life, the original becomes a messenger, continually attesting to the love of which people are capable and the divine magnificence of creating. This is what our original works express, this is the awareness that they seek to give to their enjoyer. I continue to work, striving for this alchemy..."

Enrico Zanetto

## COLTIVATORI DI BELLEZZA

*«Ricordo che quasi tutte le sere, a cena, mio padre posava al centro della tavola il prototipo a cui stava lavorando, per poterne riesaminare, con calma, le linee e i volumi, cercando i difetti e migliorare l'armonia e l'equilibrio complessivo. Io, piccino, guardavo a quegli oggetti, quelle creature nascenti, come se fossero vivi, ascoltavo la loro lingua parlare di fierezza o di dolcezza, ne percepivo l'anima. Ecco, da allora, ho sempre voluto dare vita agli oggetti. E dargli un'anima, che potesse esprimere una propria personalità e un proprio linguaggio, dialogando così con l'intima essenza, l'anima, delle persone. Ho imparato che, per avere un'anima, l'oggetto non può essere assoggettato alla schiavitù della serialità, all'estraniamento della ripetizione e alla calamità della noia, bensì deve essere un esemplare unico e irripetibile, espressione di individualità. Tale risultato si ottiene solo attraverso la manualità, i suoi 'apparenti' difetti ed errori, facendo di ogni oggetto non una 'copia' ma un originale, sollecitando la creatività del lavoratore, liberando l'oggetto dalla pura funzionalità ed esaltando un'espressività che suscita risposte emotive, anche attraverso la sollecitazione dei sensi: con la luce, con le variazioni cromatiche o con le proprietà tattili delle superfici. Instillato di questa vita, l'originale, diviene messaggero, testimone costante dell'amore di cui è capace l'uomo e della divina magnificenza del creato. Di questo vogliono parlare i nostri originali, è questa la consapevolezza che vogliono portare in dono al loro fruitore. Io continuo ad operare, a cercare questa alchimia...»*

Enrico Zanetto



## PATTERN AND FINISHING

The final aspect of our noble metals expresses the variety and eclecticism of our skills. From the pure mirroring of shiny silver, to the charm of its lunar whiteness. From the fire aroused by copper, to the warmth of the bronzes, and the preciousness of gold and platinum. And all the shades between polished and matt, as well as the different hues of burnishing.

Then chromium and nickel treatments obtaining various colorations and vintage effects. Finally the brightest and most vivid colors generated by our glazes.

*L'aspetto finale dei nostri metalli nobili esprime la varietà e l'eclettismo delle nostre abilità. Dalla pura specularità dell'argento lucido, alla fascinazione del suo biancore lunare. Dal fuoco del rame al calore dei bronzi, alla preziosità dell'oro e del platino.*

*E tutte le declinazioni tra il lucido e il satinato, così come le diverse gradazioni di brunitura. E trattamenti al cromo e nichel ottenendo varie colorazioni ed effetti vintage. Infine i colori più brillanti e sgargianti generati dalle nostre smaltature.*



## HAMMERING

Modernity enhances all that is machine made and despises manual work. The hammering technique is considered to be a leftover from the past and for this reason, mastery of this technique today is far from widespread. The bright mirror finish is only one of the metal's aspects, which in effect has an extremely rich and communicative language. Our newness lay not only in the simple reinstatement of hammering but in the elaboration of new versions, marks and textures, creating unprecedented movement on surfaces that I could find no trace of in previous history.

It was radical first and foremost, because it fearlessly manifested the manual skill of its production process, in flagrant opposition to the standardisation canons of industry and proudly declared its artisan origins, coherently integrating this characteristic in the design and models of the volumes.

*La modernità esalta il fatto a macchina e disprezza il lavoro manuale. La tecnica della martellatura è considerata un residuo del passato: per questo, oggi, la padronanza di questa lavorazione non è affatto comune. La lucente specularità è solo uno dei modi d'essere del metallo, che dispone in realtà di un lessico estremamente ricco e comunicativo. La novità da noi apportata riguarda non solo semplicemente la riabilitazione della martellatura ma l'elaborazione di nuove tipologie, segni grafici e trame, che danno vita a texture delle superfici assolutamente inedite, di cui non abbiamo riscontrato tracce nella storia precedente.*

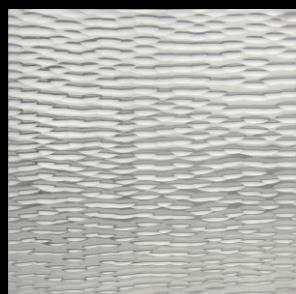
*E' radicale anzitutto perché, senza paura, rende manifesta la manualità della lavorazione, in aperta opposizione ai canoni della standardizzazione propri dell'industria e dichiara orgogliosamente la sua origine artigianale, integrando coerentemente questa caratteristica al progetto e al modellato dei volumi.*

# ZANETTO TEXTURES

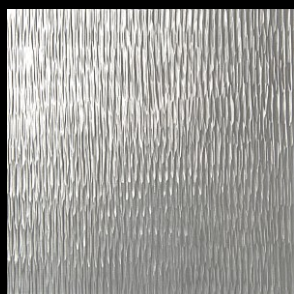
"I like to use the term ancestral alphabet, a dialogue between metal and man, but these textures speak directly to man about man, bringing him back into the centre, with his creativity and his skill. Even the most profane can understand this message and be rewarded in their individuality, because they enjoy a unique unrepeatable object."

"Mi piace parlare di alfabeto ancestrale, un dialogo tra metallo e uomo, ma quelle trame parlano direttamente all'uomo dell'uomo, riportandolo al centro, con la sua creatività e la sua maestria. Anche il fruitore più profano comprende questo messaggio ed è premiato nella sua individualità, perché gode di un oggetto unico ed irripetibile."

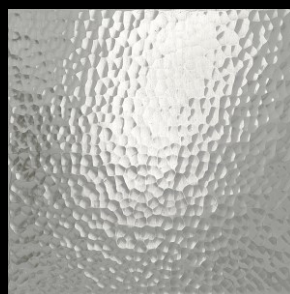
Enrico Zanetto



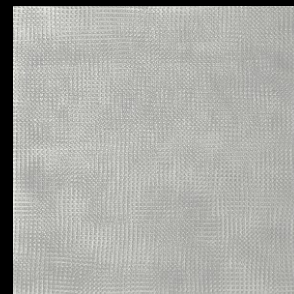
acqua



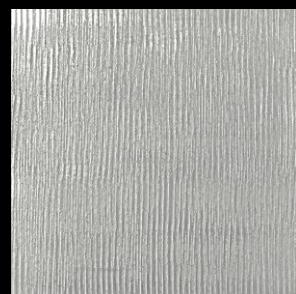
aghi



buccia



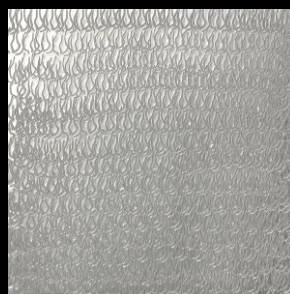
canapa



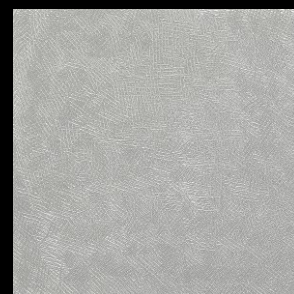
corteccia



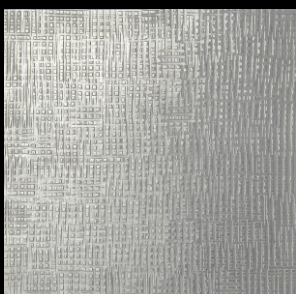
cosmica



fili



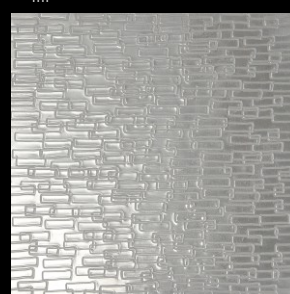
grafiti



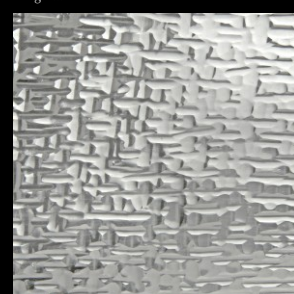
intreccio



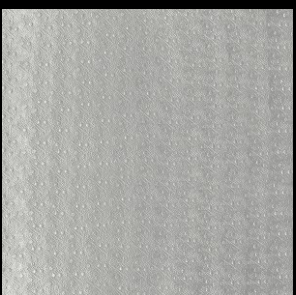
palline



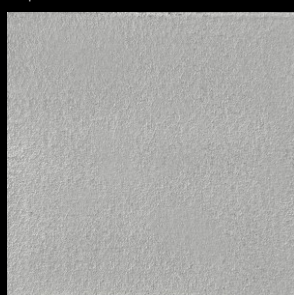
rettangoli



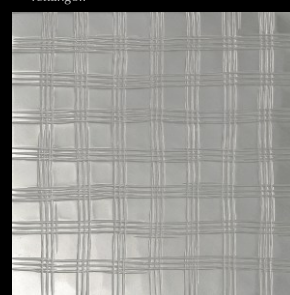
rosanero



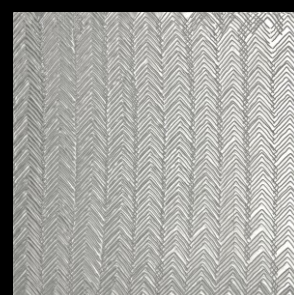
rugjada



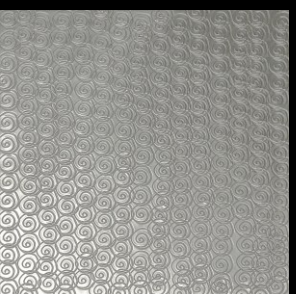
sahara



scozzese



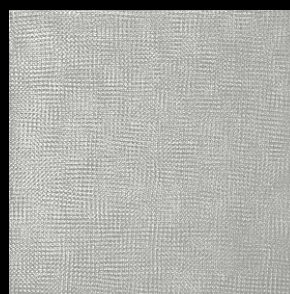
spina di pesce



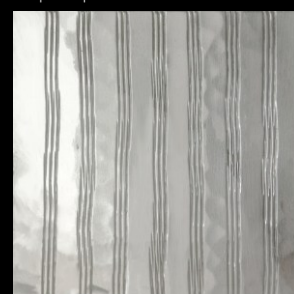
spirali



tartaruga



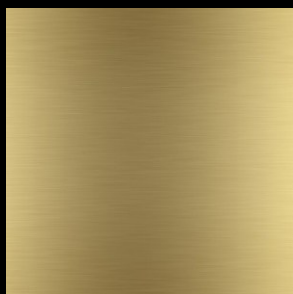
velvet



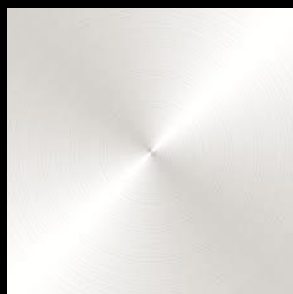
vie

# ZANETTO MATERIALS

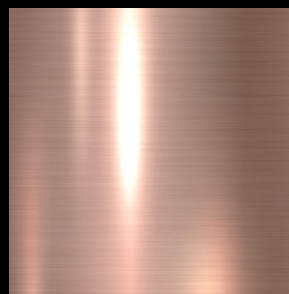
## BASE METALS



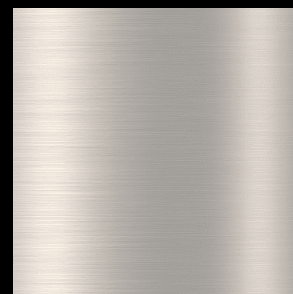
brass



sterling silver



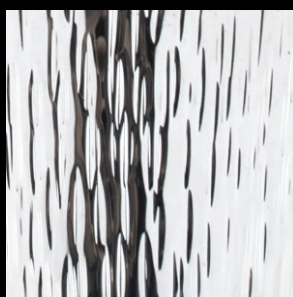
copper



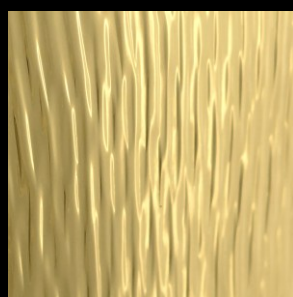
white bronze

## FINISHINGS

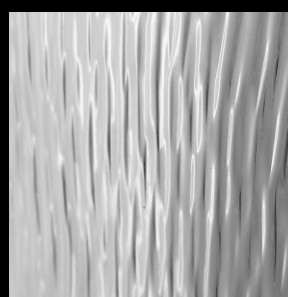
The final appearance of our noble metals expresses the variety and eclecticism of our skills. From polished silver's clean, mirror-like surface, to the appeal of its lunar whiteness. From the fiery colour of copper, to the warmth of bronze and the exquisiteness of gold and rhodium. And all the possibilities ranging from polished to satin, or the many tones of burnished finishes...



silver plated



gold plated



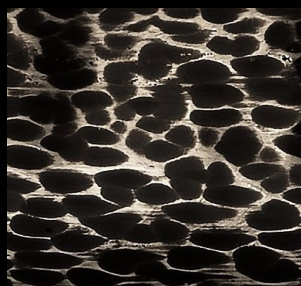
platinum plated



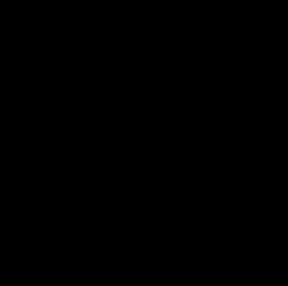
plus plated



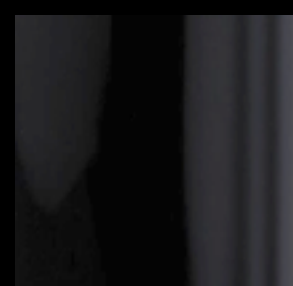
burnished copper



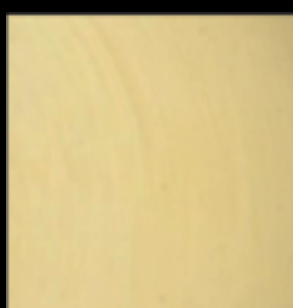
burnished bronze



burnished brass



titanium plated



gold PVD



Red PVD



color enamels



**PRODUCTS**

**CATEGORIES**

**AT TABLE**

**HOME DECOR**

**JEWELS & GIFTS**

**COLLECTIBLE DESIGN**



The "Zanetto table" offers functional elements with a sophisticated style – so many ways to make the art of drinking and serving special. Original products to savour social gatherings and the pleasures of the table in their most elegant and exquisite form.

## AT TABLE

- Party
- Drinking
- Thermic pitchers
- Tea & coffee
- Breakfast
- Baskets & fruit bowls
- Salad bowls
- To flavor
- Serving dishes
- Thermal dishes
- Trenchers & cheese dishes
- Cakes and sweets
- Your tableplace
- Your flatware
- Serving cutlery
- Table accessories
- The Classics

Party



## NEW YORK

collection

Bronze, brass and silver:

the NEW YORK Collection is finally ready to color the most beautiful tables with Zanetto's most representative materials.

The real protagonists of this collection are the lines and the workmanship.

Zanetto craftsmanship gives the solidity of the precious metals the maximum sinuosity in the lines, making them warm and discreet, ready to enhance gourmet dishes and refined environments.



## NEW YORK silver

texture Canapa, matt silver plated



- ^ bread basket - dm 18 h 5 - 3075A
- cutlery rest - 10 x 2,5 - 3077A

- ^ small tray - 29 x 10,5 - 3074A
- small bowl - dm 8 h 4 - 3071A
- medium bowl - dm 8 h 7 - 3072A
- tall bowl - dm 8 h 10 - 3073A
- Set 4 pieces - 3070A**
- breadstick holder - dm 6 h 14 - 3076A



# NEW YORK brass

Smooth, matt burnished brass



- v bread basket - dm 18 h 5 - 3075D
- cutlery rest - 10 x 2,5 - 3077D

- v small tray - 29 x 10,5 - 3074D
- small bowl - dm 8 h 4 - 3071D
- medium bowl - dm 8 h 7 - 3072D
- tall bowl - dm 8 h 10 - 3073D
- Set 4 pieces - 3070D**
- breadstick holder - dm 6 h 14 - 3076D



# NEW YORK noir

Texture TARTARUGA, matt bronze noir



- ^ small tray - 29 x 10,5 - 3074F
- small bowl - dm 8 h 4 - 3071F
- medium bowl - dm 8 h 7 - 3072F
- tall bowl - dm 8 h 10 - 3073F
- Set 4 pieces - 3070F**
- breadstick holder - dm 6 h 14 - 3076F

- ^ bread basket - dm 18 h 5 - 3075F
- cutlery rest - 10 x 2,5 - 3077F





< ^ **7815** Set cocktail 4 pieces **VELVET 1**  
texture Canapa - light gold - 29x10 h 10

> Cocktail bowl **VELVET 1**  
texture Canapa - light gold  
**7812** small dm 8 h 4  
**7813** medium dm 8 h 7  
**7814** big dm 8 h 10



v **7821** Small rectangular tray **VELVET 1**  
texture Canapa, matt light gold - 29x10 h 3



> **DOUBLE EASTER**  
texture Corteccia  
25 x 10 h 9  
**9627** silver plated  
**9627G** gold plated



< bowl **EASTER**  
texture Corteccia  
10 x 13 h 9  
**9626** silver plated  
**9626B** brass  
**19626** sterling silver - gr 180

The reflections of gold and silver propagate in space and create illusory stars of light on the walls and in the eyes of the observer. This is the undoubted elegance of this special object with an enveloping design and a singular shell shape.



^ Pleasures offer **INTRECCI**  
Texture SPIRALI - 17 x 10 h 5  
**9377** silver plated - **9377G** gold plated



^ Pleasures offer **INTRECCI 2**  
Texture AGHI A RAGGIERA  
30 x 16 h 6 - **9379** Silver plated



^ **CANOA BABY**  
Texture AGHI - 38 x 6 h 3  
**9185** silver plated



^ pleasures offer **KIWI**  
texture Aghi a raggiata  
dm 21 h 13  
**9380** silver plated  
**9380R** platinum plated



< Set **TRIS APE**  
1 plate & 3 bowls SALIRO'  
texture AGHI - shiny - dm 20 h 6  
**9110** silver plated  
**9110H** gold PVD



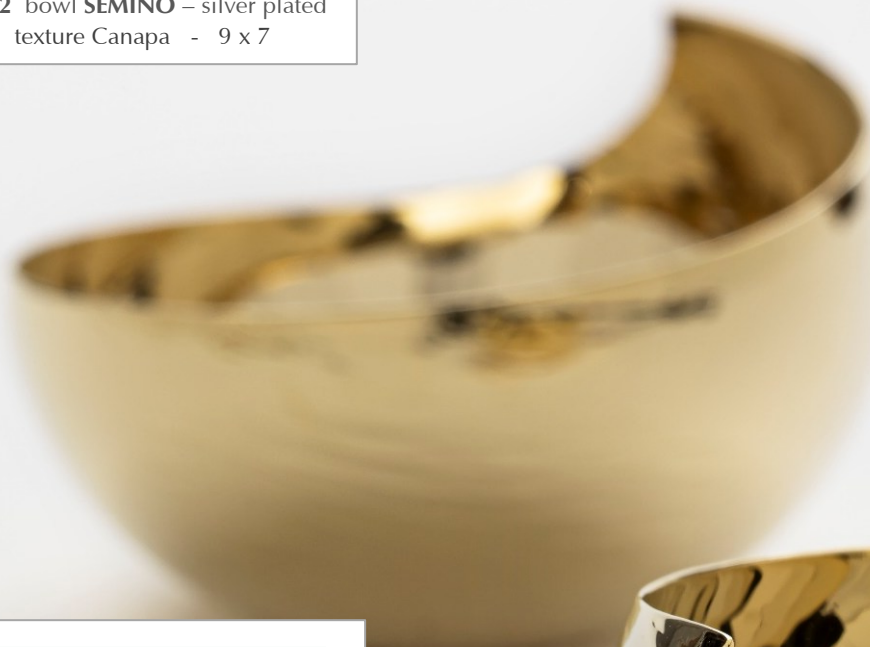
^ 9112 bowl SEMINO – silver plated  
texture Canapa - 9 x 7



^ 9113 bowl SALIRO' – silver plated  
texture Aghi - dm 8



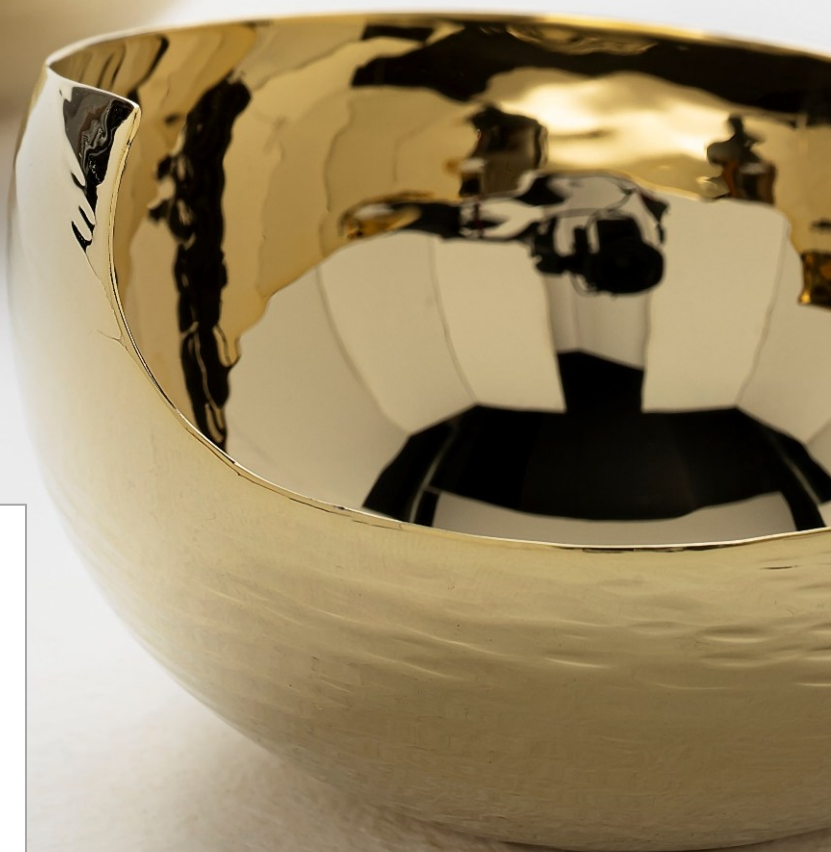
^ 9114 bowl TOKIO – silver plated  
texture Puntini - dm 8



^ bowl TRIO – dm 11 h 4  
texture Corteccia  
9121 silver plated



^ bowl TAGLIO – dm 11 h 5  
texture Corteccia  
9122 silver plated





^ 2117 horse d'oeuvre set BINARIO  
30 x 12 - plus plated



^ 2118 horse d'oeuvre set BINARIO  
40 x 17 - plus plated



^ 2119 horse d'oeuvre set BINARIO  
33 x 23 - plus plated



^ 2151 serving set MARGHERITA  
dm 60 (47) h 9 - plus plated



^ 0151 cold drinks pitcher **ZARA**  
h 26 dm 16 (lt 2,0) - plus plated



^ 0152 cold drinks pitcher **COIMBRA**  
h 20 dm 20 (lt 2,5) - plus plated



^ 0507 cold drinks pitcher **ANGIE**  
h 26 dm 16 (lt 2,0) - silver plated



^ 0506 cold drinks pitcher **MOON**  
h 20 dm 20 (lt 2,5) - silver plated



^ 0069 crystal jug **ITALIA**  
h 27 dm 10 (lt 0,85) - plus plated



^ 9504 cocktail shaker **VIE**  
h 23 dm 8 (lt 0,75) – silver plated



^ cocktail shaker **NEWLIFE** – h 23  
9354 Silver pl. - 9354G gold pl.



^ 0154 cocktail shaker **ITALIA**  
h 22 dm 8 (lt 0,75) - plus plated



^ 9254 cocktail shaker **CORTECCIA**  
h 23 dm 8 (lt 0,75) – gold plated



^ 9261 mixer **LECCALECCA**  
length 29 – gold plated



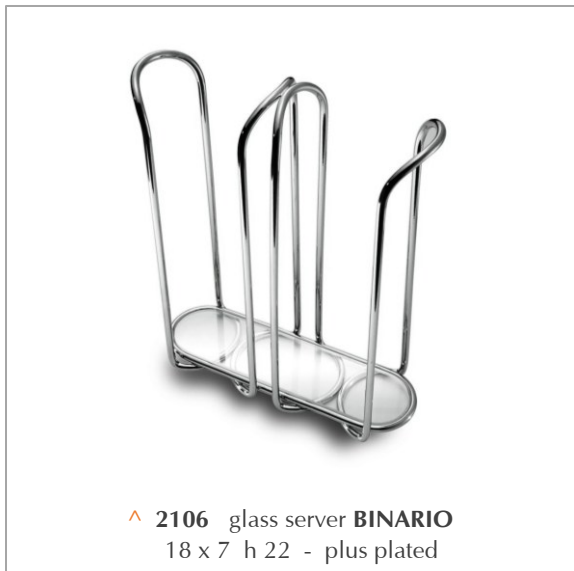
^ 9353 measuring cup **COCKTAIL**  
Design Enrico Z - dm 4 h 8 - 2/4 cl  
texture AGHI - platinum plated



^ 9521 bar strainer **VIE**  
length 21 - silver plated



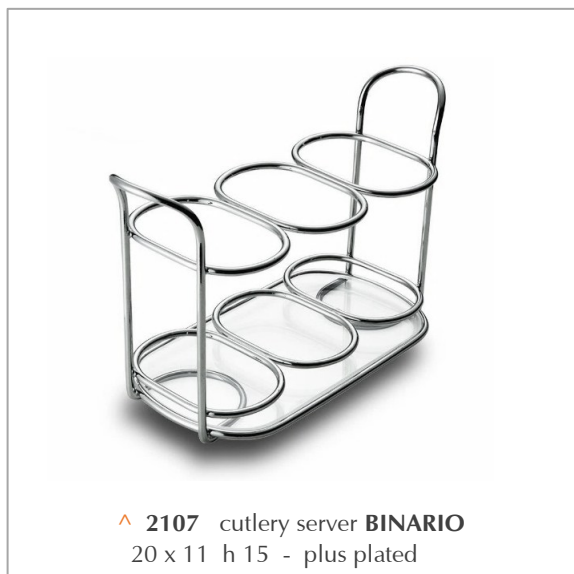
^ 9522 bar muddler **VIE**  
length 21 - silver plated



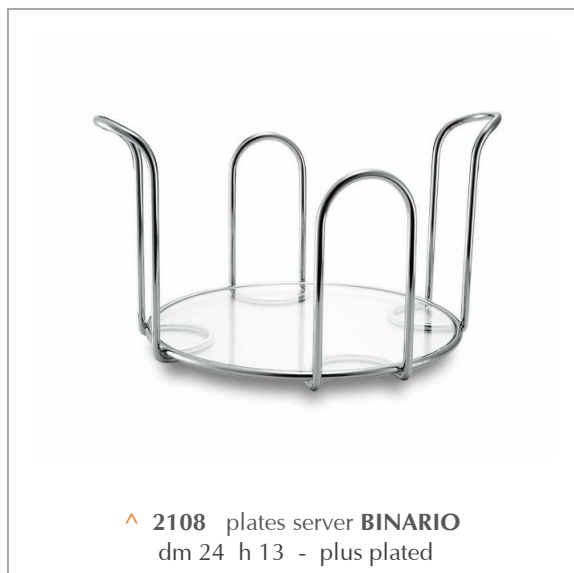
^ 2106 glass server **BINARIO**  
18 x 7 h 22 - plus plated



^ 2109 napkins server **BINARIO**  
20 x 20 h 20 - plus plated



^ 2107 cutlery server **BINARIO**  
20 x 11 h 15 - plus plated

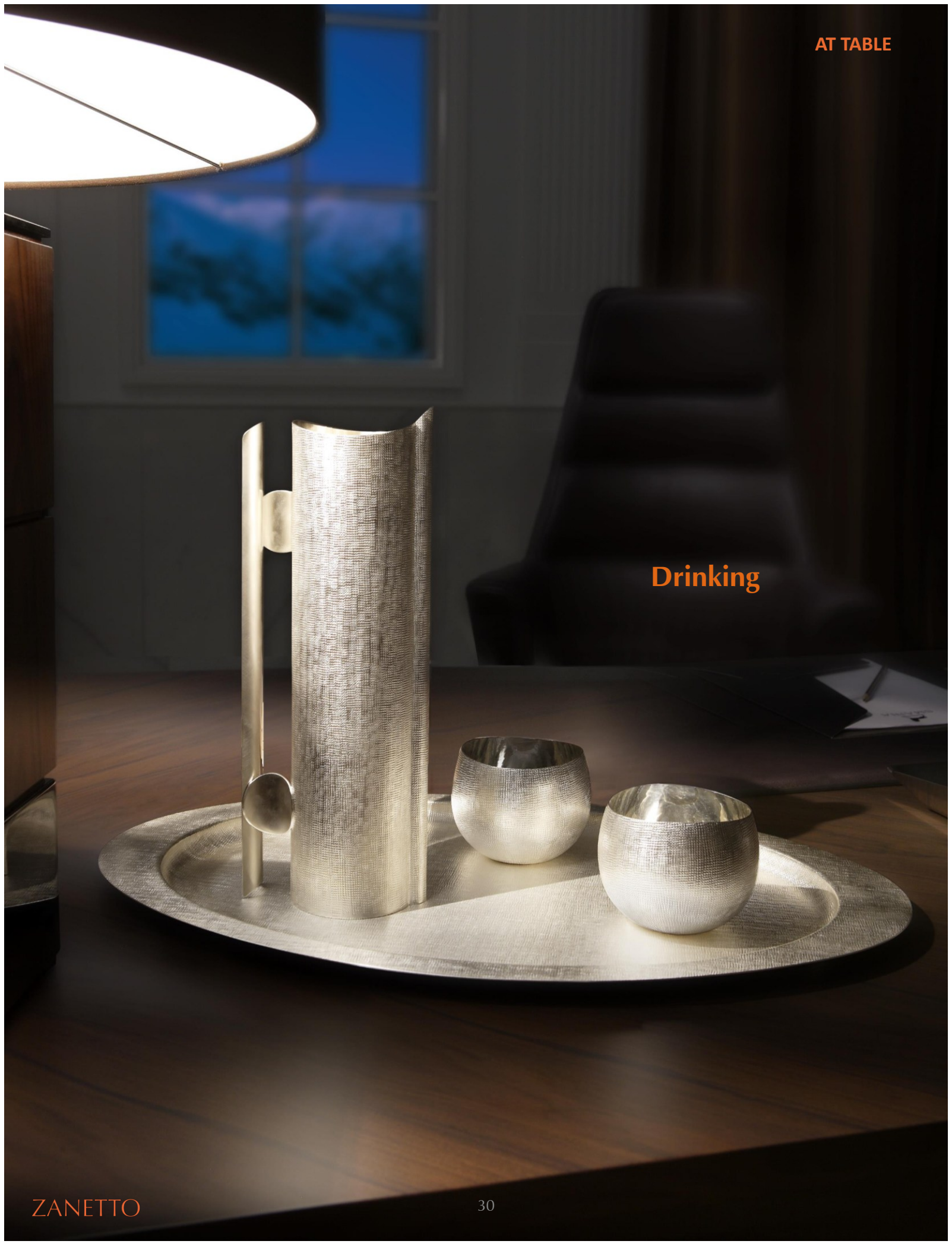


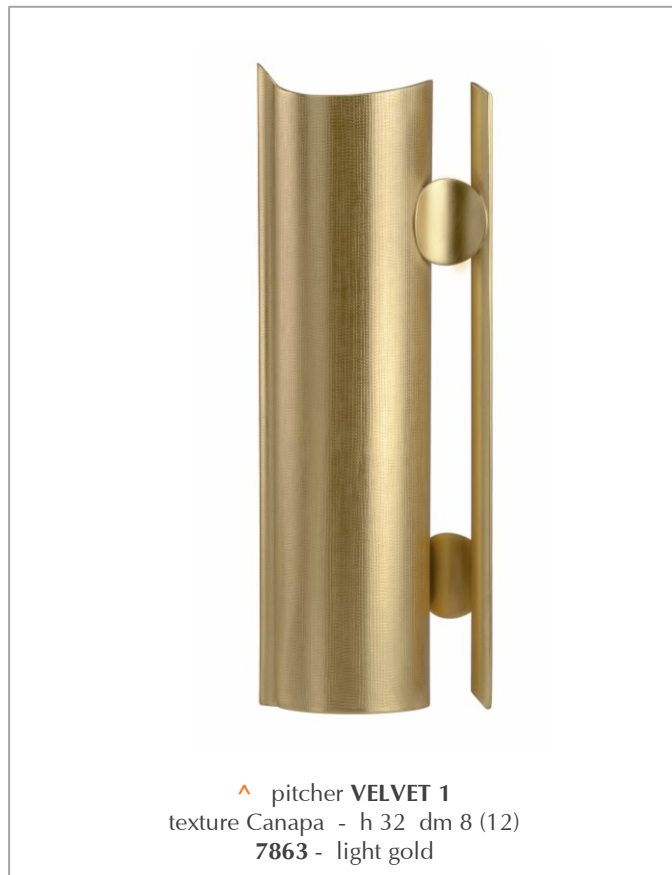
^ 2108 plates server **BINARIO**  
dm 24 h 13 - plus plated



^ 9176 napkins server/card hold **PASSIONI** -  
15x6 h10 - plus plated

Drinking

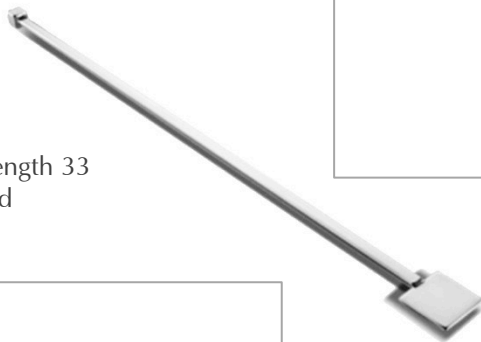






^ pitcher **GAIA**  
smooth & polished - h 24 8 x 8  
**9564** silver plated

> mixer **GAIA**  
smooth & polished - length 33  
**9561** silver plated



^ pitcher **LUCE**  
texture Aghi - polished - h 22 dm 9  
**9362** silver plated



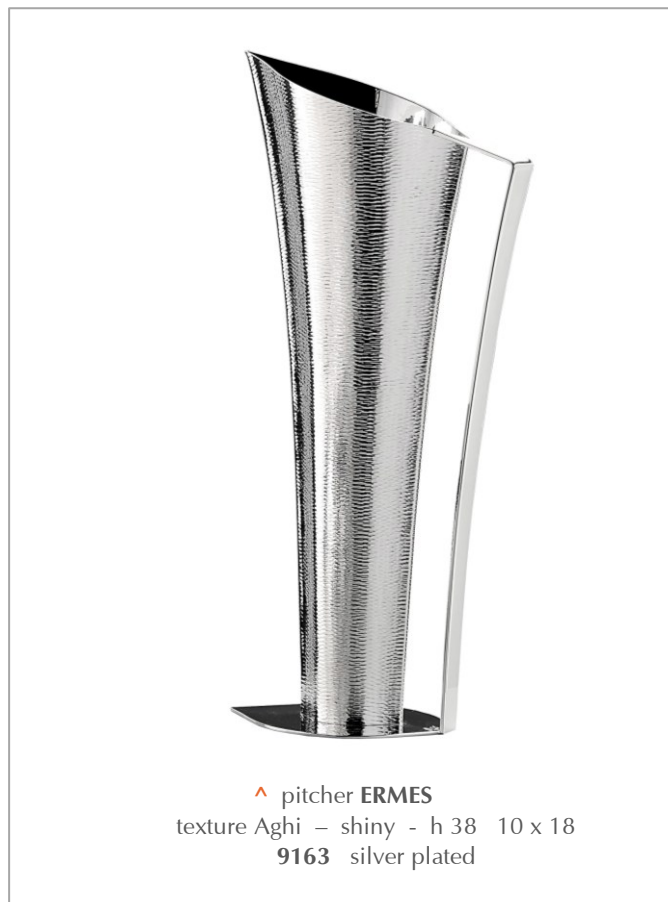
^ pitcher **VIE**  
texture VIE - polished - h 27 15 x 8  
**9513** silver plated



^ pitcher with tumbler/lid **AQUA**  
texture Aghi - h 27 dm 12  
**9662** platinum plated, gilded inside, crystal jug



^ v pitchers **ANNA & MARCO** - smooth & polished  
 ANNA - h 16 dm 12 –  
 0504 silver plated – 1504 sterling silver – gr 690  
 MARCO - h 24 dm 12 –  
 0502 silver plated – 1502 sterling silver - gr 1020



^ pitcher **ERMES**  
 texture Aghi – shiny - h 38 10 x 18  
 9163 silver plated



^ pitcher **MAIA**  
 texture Aghi – polished - h 18 dm 18  
 9164 silver plated



^ tumbler **CAPRI**  
texture Acqua  
cold enamel & silver plated  
9417 dm 9 h 10

Porto cup **CAPRI**  
texture Acqua  
cold enamel & silver plated  
9416-2 dm 6,5 h 7

Colors: orange blue yellow red turquoise green black white



^ shot glass **ISHRAM**  
texture Aghi – gilded inside - dm 5 h 5  
**9316** silver pl. – **9316R** platinum pl.  
**19316** sterling silver – gr 45



^ baby / porto cup **ISHRAM**  
texture Aghi – gilded inside - dm 6,5 h 7  
**9316-2** silver p – **9316R-2** platin. pl.  
**19316-2** sterling silver – gr 120



^ tumbler **ISHRAM**  
texture Aghi – gilded inside - dm 9 h 10  
**9317** silver pl. – **9317R** platinum pl.  
**19317** sterling silver – gr 205



^ **7847** tumbler **VELVET 1**  
dm 8 h 9 - texture Canapa  
gold plated



^ tumbler **AFRICA**  
texture Canapa – dm 8 h 9  
**9827** silver plated



^ tumbler **UNO**  
texture Intrecci – dm 8 h 9  
**9217** silver plated, gilded inside



^ tumbler **VELVET**  
texture Velvet – dm 9 h 8  
**9817** silver pl. – **9817G** rosegold pl.



^ tumbler **ARQO**  
texture Spirali – dm 8 h 9  
**9247** Platinum plated, gilded inside



^ tumbler **VIE**  
texture Vie - dm 8 h 11  
**9517** silver plated



▲ tumbler **VELVET**  
texture Velvet – dm 9 h 8  
9817 silver plated – 9817G rose gold plated

## VELVET 1 Collection

when brass and texture become Velvet  
for table jewels



^ 7842 flute **VELVET 1** - h 21 dm 6  
texture Canapa - gold plated



^ 7843 wine cup **VELVET 1**  
h 20 dm 10  
texture Canapa - gold plated



^ 7845 martini cup **VELVET 1**  
dm 12 h 16  
texture Canapa - brass, gold plated

> flute **DRI**  
 texture Aghi - h 21 dm 6 - gilded inside  
**9364** silver plated - **9364R** platinum plated



^ champagne cup **WAVE**  
 smooth & polished - h 13 dm 11  
**0265** silver plated, gilded inside



^ flute **CASCAMONDO**  
 smooth & polished - h 18 dm 8  
**9162** silver plated - **9162R** platinum plated



^ liquor set **SCACCIAPENSIERI**  
8 shot glasses in 8 different textures (gilded inside) – h 5 dm 5  
with smooth tray – 23 x 12  
**9615** silver plated - **9615R** platinum plated  
**19615** sterling silver - gr. 600



^ **9229** liquor set **EYE** - 6 Eye shot glasses with a rect. Tray  
6 different texture, shiny - 19 x 11 h 6 - silver plated (cups gilded inside)



^ **3135** liquor set **BUS**  
texture AGHI, shiny silver plated, mother of pearl  
29 x 12 h. 4,5 - composed by:  
1 tray **3138** 29x12 and 6 cups gilded inside **3136** dm4 h4,5



^ liquor set **8** - 8 crystal shot glasses on tray with handle  
texture AGHI, shiny - 25 X 15 H. 15  
**0156T** silver - titanium plated / **0156G** silver - gold plated





^ **SET LIQUOR 12**  
smooth & shiny - 27x27 h 23  
**0157** – silver plated & copper  
12 shot glasses



**SET LIQUOR 20**  
smooth & shiny - dm 36 h 23  
**0158** – silver plated & titanium plated  
20 shot glasses





^ 7850 champagne bucket **VELVET1**  
text. Canapa – light gold - h 22 dm 20



^ 9850 champagne bucket **VELVET**  
text. Canapa – silver plated - h 22 dm 20



< v 9518 champagne bucket **VIE**  
texture Vie – silver plated  
h 24 dm 21



^ 9368 champagne bucket **AVANGARDE**  
texture Aghi - silver plated - dm 19 h 23



^ 0250 champagne bucket **AURELIO**  
smooth & shiny - plus plated - dm 21 h 21



v > **9168** champagne bucket **DIONISO**  
 texture Aghi orizzontale - h 24 dm 21  
**9168** silver plated  
**9168B** brass (beeswax coating)



^ champagne bucket **EVOLUZIONE**  
 Smooth & shiny - h 29 dm 29  
**9668** silver plated  
**9668B** plus plated (no tarnish)



^ champagne bucket on stand  
**GERMOGLIO**  
 texture Aghi - h 91 dm 26  
**9138** Plus plated (no tarnish)  
**9138B** light gold (varnished)



^ 0258 round bottle stand **TRINO**  
smooth & shiny – plus plated - dm 27 h 21



^ 9350 bowl/round bottle stand **SATURNO**  
texture Aghi - silver plated - dm 34 h 19



< 7825 centerpiece / round bottlestand **VELVET 1**  
texture Canapa - light gold - dm 43 h 22

> round bottle stand **BOLLE** - smooth & shiny

0218 big bowl **SANGRIA** - silver plated, plexi - dm 35 h 20

0217 plate **SGOCCILO** - silver plated - dm 41 h 2

0219 bottle support - silver plated - dm 11 h 16

0221 complete set 6 pcs - silver plated, plexi - dm 41 h 20





< ^ 7866 glacette **VELVET 1**  
 texture Canapa – light gold - h 22 dm 14  
 Insulated san containers to be glazed before using



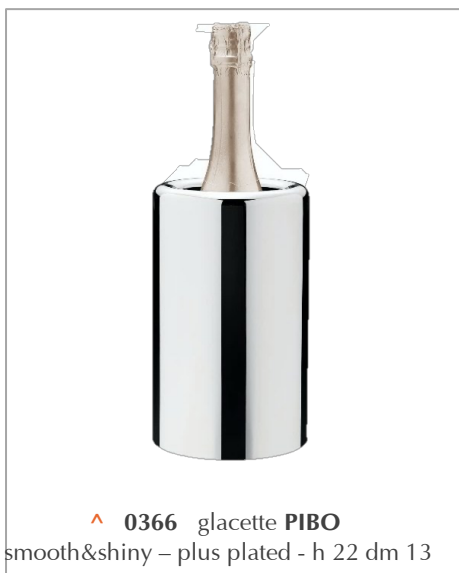
^ 9520 glacette **VIE**  
 texture Vie – silver plated - h 29 dm 19



^ 9166 glacette **MAGNUM**  
 texture Rettangoli - h 22 dm 13  
 fits to magnum bottles - silver plated



^ 9356 glacette **NEWLIFE**  
 texture Aghi - h 22 dm 14 – silver plated



^ 0366 glacette **PIBO**  
 smooth&shiny – plus plated - h 22 dm 13



^ 0367 glacette & pitcher **PIBO**  
 smooth&shiny – plus plated - h 27 dm 13



^ 0067 glacette **POLARIS**  
 smooth&shiny – plus plated - h 24 dm 16



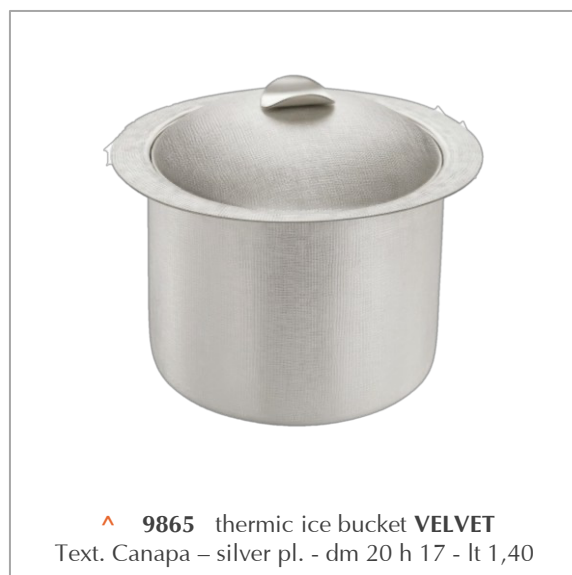
^ 9515 thermic ice bucket **VIE**  
texture Vie – silver pl. - dm 20 h 17 - lt 2,00



^ 9514 ice tongs **VIE**  
texture Vie – silver plated - length 19



^ 9505 thermic ice bucket with tongs **VIE**  
texture Vie – silver pl. – dm 18 h 15 - lt 1,40



^ 9865 thermic ice bucket **VELVET**  
Text. Canapa – silver pl. - dm 20 h 17 - lt 1,40



^ 0365 thermic ice bucket **PIBO** - plus plated  
smooth & polished  
dm 16 h 20 - cap. lt 2,0



^ 9365 /9365-2 therm. ice bucket **AQUARIUS**  
texture Aghi - silver plated  
dm 16 h 19 lt 1,40 / dm 17 h 23 lt 2,0



^ **7848** Ice tongs **VELVET 1**  
texture Canapa – light gold  
length 17



^ **7849** Ice bucket **VELVET 1**  
texture Canapa – light gold  
dm 15 h 15



^ **9849** ice bucket **VELVET**  
texture VELVET – silver pl. - dm 15 h 15

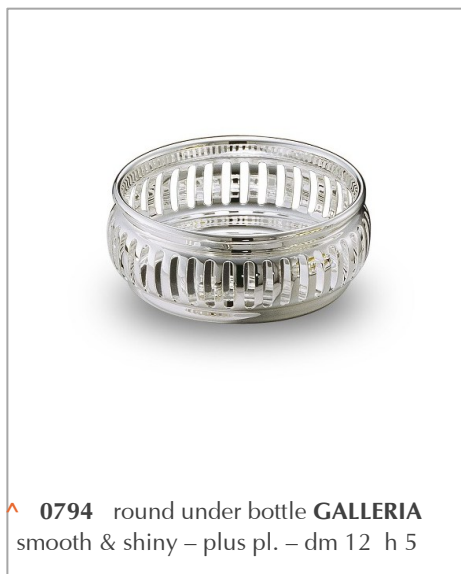
^ **9848** ice tongs **VELVET**  
texture VELVET – silver pl. - length 20



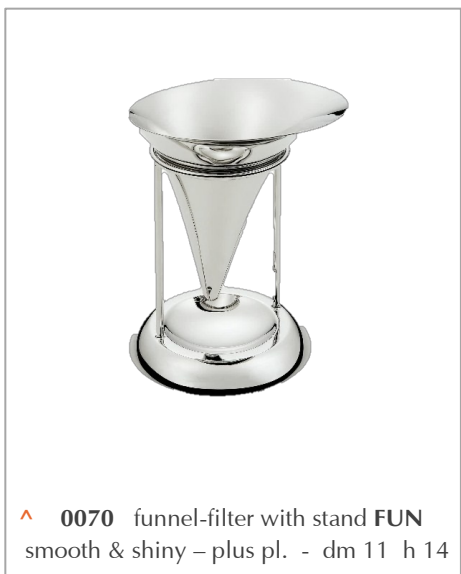
^ **0249** ice bucket **AURELIO**  
smooth & shiny – plus pl. - dm 15 h 15



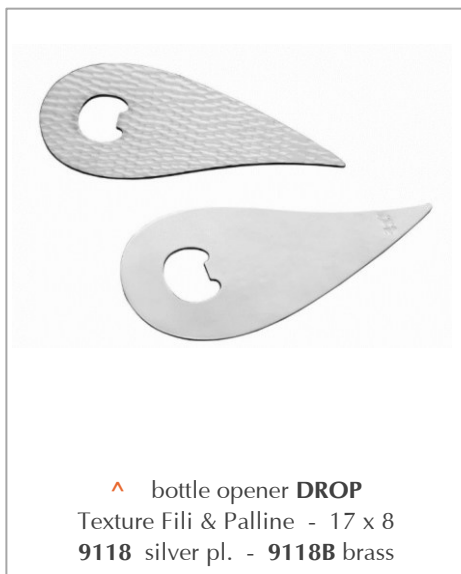
^ wine server **MERLO**  
texture Aghi - h 22 21x10  
**9167** silver plated - **9167B** brass



^ **0794** round under bottle **GALLERIA**  
smooth & shiny – plus pl. – dm 12 h 5



^ **0070** funnel-filter with stand **FUN**  
smooth & shiny – plus pl. - dm 11 h 14



^ bottle opener **DROP**  
Texture Fili & Palline - 17 x 8  
**9118** silver pl. - **9118B** brass



Thermic pitchers

# THERMIC PITCHERS

new collection



Zanetto presents the new elegant collection of thermal carafes, designed with both functionality and aesthetic grace in mind.

These carafes feature a convenient push-button pour cap that exemplifies ease of use while maintaining the beverage's desired temperature, whether hot or cold. Crafted with Zanetto's signature attention to detail and unique design, these thermal carafes are not only perfect for personal use but also ideally suited for the hospitality industry.

The sleek and modern design complements any setting while offering the practicality needed for professional use. Experience the blend of Zanetto's artisanal craftsmanship and innovative functionality with our new thermal carafe collection.



^ > 7869 thermic pitcher with click cap **VELVET 1**  
design Enrico Z - texture CANAPA, shiny light gold  
h.34 dm 10 (13) cap. Lt 1,0



< ^ thermic pitcher with click cap **VELVET 1 FAT**  
design Enrico Z - texture CANAPA, shiny light gold  
7870 h. 25 w15 (19) cap. Lt 1,0  
7871 h. 29 w15 (19) cap. Lt 1,5





^ thermic pitcher with click cap **GALLO**  
 design Enrico Z - smooth and shiny silver plated  
**9580** h. 25 w15 (19) cap. Lt 1,0  
**9581** h. 29 w15 (19)cap. Lt 1,5



^ > thermic pitcher with click cap **LINA**  
 design Enrico Z - texture AGHI FIRE, shiny silver plated  
**9570** h. 25 w15 (21) cap. Lt 1,0  
**9571** h. 29 w15 (21) cap. Lt 1,5



^ 7859 thermic pitcher **VELVET 1**  
texture Canapa - brass  
h 30 dm 10 - cap. lt 0,75



^ thermic pitcher **ENERGIA**  
Texture Aghi orizzontale - h 29 - lt 0,75  
**9366** silver plated



^ thermic pitcher **OSTERIA**  
Smooth&shiny – silver plated:  
**9664-2** h 23 - cap. lt 0,35 - **9667-2** h 32 – cap. lt 1,00  
Texture Aghi – silver plated:  
**9664** h 23 - cap. lt 0,35 - **9667** h 32 - cap. lt 1,00



^ thermic pitcher **AIRONE**  
smooth & shiny - plus plated  
**0165** h 27 lt 0,50 - **0166** h 30 lt 0,75 - **0167** h 33 lt 1,00



^ thermic pitcher **ROSALIA** - smooth & shiny  
**0159** plus plated - cap. lt 0,50 - screw closing cup



^ thermic pitcher **HIDALGO** - smooth & shiny  
**0160** plus plated - cap. lt 1,00 - screw closing cup



^ thermic pitcher **REGINA ANNA**  
 smooth and shiny – click cap - h. 29 ш15 (20) cap. Lt 1,5  
**0677** silver plated / **0677G** gold plated



## Tea and coffee



## SLO

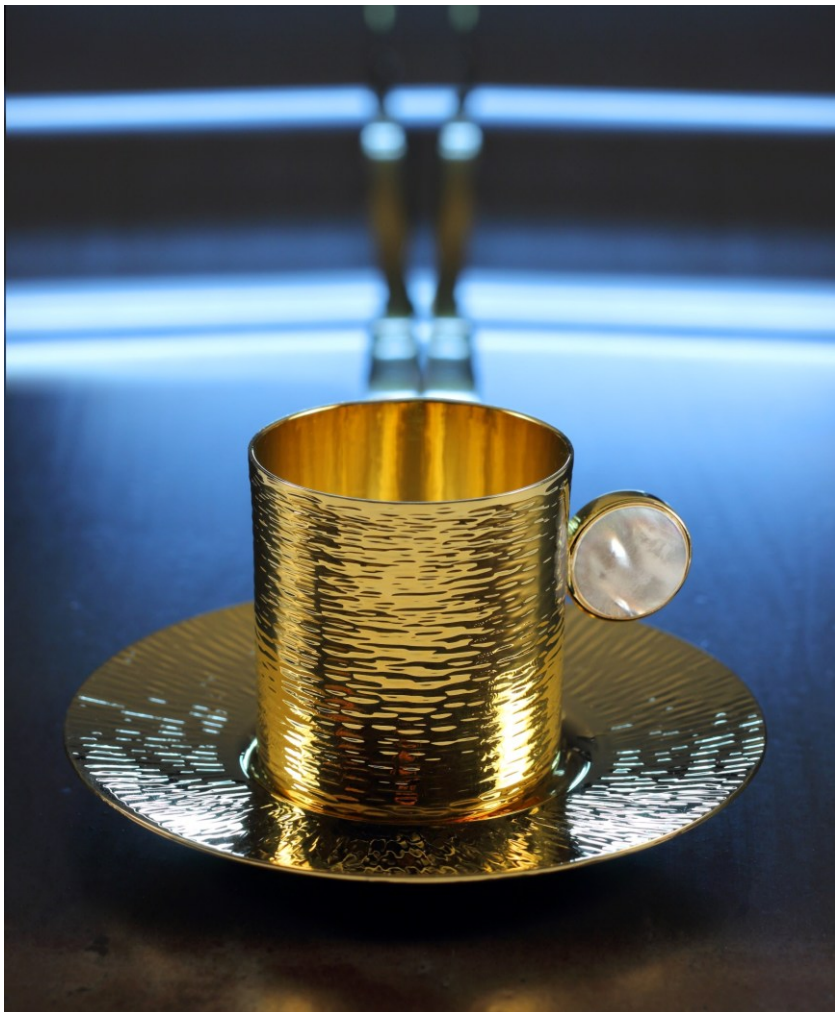
Coffee cups



^ coffee cup with plate **SLO** – design Enrico Z  
texture SPIRALI, shiny - dm 10 h 7  
**3141** silver plated / **3141G** gold plated



^ coffee set for two **SLO2** – design Enrico Z  
texture SPIRALI and SPINAPESCE, shiny - dm 10 h 7  
**3144** silver plated / **3144G** gold plated



^ coffee cup **BUS** - **3131G** gold plated  
texture aghi - mother of pearl - dm 10(5) h 5



^ corree cup **BUS**  
texture aghi - mother of pearl - dm 10(5) h 5  
**3131R** platinum pl - **3131** silver plated



^ coffee stick **BUS** - length 9  
**3132** silver plated  
**3132R** platinum pl.- **3132G** gold pl.

> v tea cup with plate **BUS**  
texture AGHI, shiny - dm 15,5 h 6,5 cup dm 7  
**3134** silver plated / **3134G** gold plated



## BUS

Tea cup with plate



^ oriental tea cup **KARAMA** - texture Aghi, shiny - dm 12 h 9  
Cup & plate - **3127** Silver plated (gilded inside) - **3127R** platinum plated (gilded inside)



^ **3123** coffee set **AROMA**  
6 different texture, shiny - dm 24 h 5  
silver plated (cups gilded inside)

^ thermic coffee cup **MERGELLINA** - texture Aghi, shiny - dm 6 h 5  
**3121** Silver plated (gilded ins.) - **3121R** platinum plated (gilded ins.)



v tea and coffee set **EBONY**  
 5 pieces - texture Aghi orizzontale  
 9315 silver plated - 19315 sterling silver gr. 3490



^ oval tray **EBONY** - texture Aghi - 52x33  
 9310 silver plated - 19310 sterling silver gr. 1270



^ coffee pot **EBONY** - h 23 dm 9  
 9311 silver pl. - 19311 sterling sil. gr 830



^ tea pot **EBONY** - h 18 dm 11  
 9312 silver pl.-19312 sterling sil. gr 840



^ milk jug **EBONY** - h 10 dm 6  
 9314 silver pl.-19314 sterling sil. gr 310



^ sugar-bowl **EBONY** - h 11 dm 7  
 9313 silver pl.- 19313 sterling sil. gr. 220



^ 9320 breakfast set **EBONY**  
 4 pcs - texture Aghi - 20x12 h 13 silver plated



^ coffee-pot **EBONY FOR TWO**  
 9311-2 - dm 9 h15 - silver plated

# GRACE

Tea & coffee set

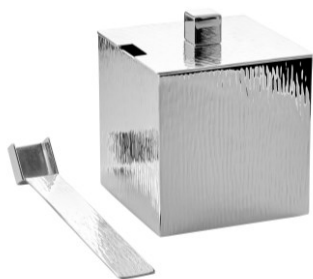


# GRACE

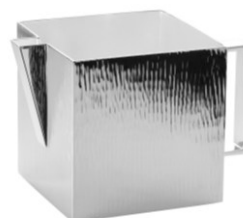
Tea & coffee set



^ 9455 tea & coffee set **GRACE**  
texture AGHI, shiny silver plated



^ 9453 sugar bowl **GRACE**  
texture AGHI, shiny silver plated - 8 x 8 h 8  
9450 spoon **GRACE**  
texture AGHI, shiny silver plated - l. 14



^ 9454 creamer bowl **GRACE**  
texture AGHI, shiny silver plated - 8 x 8 h 8



< 9464  
verseuse /  
pitcher **GRACE**  
texture AGHI,  
shiny silver  
plated - h 24  
8 x 8 cap. Lt  
1,30



^ 9459 rectangular tray **GRACE**  
texture AGHI, shiny silver plated - 46 x 29 h 23

# GAIA

Tea & coffee set



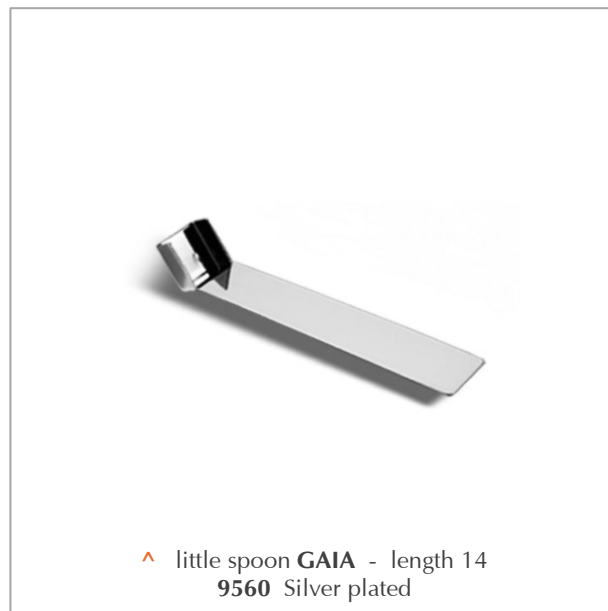
^ tea-pot **GAIA** - h 20 10x10 - lt 1,25  
9562 Silver plated



^ creamer **GAIA** - h 8 8x8 - lt 0,375  
9554 Silver plated



^ sugar-bowl **GAIA** - h 8 8x8 - lt 0,375  
9563 Silver plated



^ little spoon **GAIA** - length 14  
9560 Silver plated



^ square tray **GAIA** - 41x36 h 3  
9558 Silver plated



^ rectangular tray **GAIA** - 52x37 h 3  
9559 Silver plated



^ **0355** tea&coffee set 5 pcs **EYE** - silver plated - smooth&shiny - **0351** coffee-pot **EYE** h 23 dm 9 - **0352** tea-pot **EYE** h 18 dm 11 - **0353** sugar bowl **EYE** dm 9 h 8 - **0354** milk-jug **EYE** h 10 dm 6



^ **0350** tray **EYE** - silver plated smooth&polished - 42 x 35



^ **0345** milk&sugar **EYE** set 4 pcs - silver plated  
**0342 / 0353 / 0354 / 0358**  
**0342** small oval tray **EYE** - 21 x 16



^ **0358** little spoon **EYE** silver plated - length 11



^ **0357** miniset breakfast **EYE** - 3 pcs  
16 x 10 h 7 - platinum plated

Breakfast





^ 9503 sugar bowl **VIE** - silver plated  
texture Vie - dm 10 h 11



^ 9500 little spoon **VIE**  
silver plated - texture Vie - l. 16



^ 9603 sugar bowl **CAPRICCIO**  
silver plated - texture Aghi - dm12 h 12



^ 9177 sugar bags holder **BIPOP**  
silver plated  
texture Aghi - 9x6 h 5



^ ice cream bowl with saucer, sauce stand & honey dish  
**AQUARIUS**  
texture Aghi raggiera - dm 14 h 5  
9302 silver plated - 9302R platinum plated



^ butter holder with cover **DROP**  
texture Aghi - 19x12 h 7  
9330 silver pl. - 9330R platinum pl.



^ 2103 butter holder **BINARIO**  
plus plated - 23x10 h6



^ indiv. butter holder **AQUARIUS**  
texture Aghi - dm 11 h 7  
9303 silver pl. - 9303R platinum pl.



< double marmalade hold. **ITALIA**  
smooth & polished - l. 22 h 9  
**0029** silver plated



> triple flakes holder **ITALIA**  
smooth & polished - dm 20 h 9  
**0032** silver plated



^ **2171** breakfast set **BINARIO**  
plus plated - 22x15 h5



^ **0034** toast stand **ITALIA**  
plus plated - 22x15 h9



^ **0020** egg-cup **ITALIA**  
dm5 h5 - silver plated



**Baskets & Fruit bowls**





^ 7822 bowl & bread basket **VELVET 1**  
dm 18 h 6 - texture Canapa - light gold



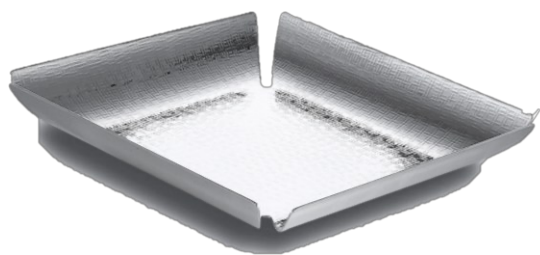
^ 9534 oval basket **VIE**  
Texture Vie - shiny - 19x14 h 7 - silver plated



^ 9333 square basket **SOLE**  
Texture Aghi raggiera - shiny - 18x18 h 5 - silver pl.



v 9822 bread basket with cotton cloth **VELVET**  
texture Velvet - silver plated - dm 30 h 7



^ square basket **UNO**  
texture Intreccio - shiny - 20x20  
9212 silver plated - 9212B brass



^ 9352 round basket **ANYL**  
texture Aghi concentrica - shiny - dm 30 h 7 - silver pl.



^ bowl **SOLE** - texture Aghi raggiera - shiny  
silver plated - **9343** dm 12 h 4 - **9344** dm 16 h 5  
**9345** dm 20 h 6 - **9345-2** dm 24 h 7



^ fruit bowl **SATURNO**  
texture Aghi - shiny - dm 33 h 10  
**9325** silver plated - **9325B** light gold



^ round basket **GALLERIA**  
plus plated  
**0721** dm 16 - **0721-2** dm 24



^ square bread basket **Galleria**  
plus plated  
**0713** 20 x 20



^ oval bread basket **GALLERIA**  
plus plated  
**0724** 20x16 - **0724B** 26x19



^ bowl **SETTANTADUE**  
texture Acqua - shiny - silver plated  
**0072** dm 21 h 7 - **0074** dm 26 h 9



^ **0254** oval basket **ITALIA**  
smooth & shiny - plus plated - 27x20 h 5



Salad bowls



^ 9836 salad bowl **VELVET**  
texture Velvet - matt - 42x37 h8 - silver plated



^ 9851 pair of salad servers **VELVET**  
texture Velvet - matt - l. 27 - silver plated







To flavor



> **EYES oil and vinegar**  
 The lids of the two containers - oil and vinegar cruet - have different textures. They open with a hinge system. The oil cruet is decorated with small spheres imitating the letter O, the vinegar cruet has a fishbone effect to evoke the letter V that stands for vinegar.

textures ACQUA, PALLINE & SPINAPESCE 17 x 7 h 20

9250 Silver plated

9250R platinum plated



> **EYES salt and pepper**

textures ACQUA, PALLINE & SPINAPESCE 17x7 h 20

9252 silver plated

9252R platinum plated



**EYES** Elegant, simple and precious. It is a work of true silversmith art that requires considerable skill, starting from creation of the most rounded and feminine shapes in the bottom **part** with the more squared and geometric forms in the upper part, and edges that are initially sharp which then soften and disappear ...



^ 9206 spices holder ZENZI  
Textures MIX - 24x5 h 15  
plus plated



^ 9208-3 square sauce-holder SENFI  
texture ACQUA, shiny plus plated  
16 x 16 h. 15



^ 9208 sauces holder SENFI  
Textures MIX - 34x8 h 15  
plus plated

ZENZI&SENI spice containers, with the elegant ACQUA & MIX texture in PLUS alloy (a galvanic treatment with an exclusive formulation that assures the metal an excellent gloss and a colour that is very similar to silver, making it completely stainless and increasing resistance to scratches).





^ cheese dish **VELVET 1**  
texture Canapa - matt - dm 11 h 6  
**7802** light gold - **7802A** silver plated



^ **0304** cheese dish **ITALIA**  
dm 13 h 8 - plus plated



^ cheese dish **DROP**  
texture Aghi - dm 11 h 7  
**9304** silver plated



< **9506** spice holder **BRIDGE**  
texture SPINAPESCE, VIE, INTRECCI  
shiny silver plated - dm 12 h 12  
shakers dm 4,5 - h. 5 - 7 - 7,5



^ **2102** cheese dish **BINARIO**  
dm 10 h 8 - plus plated



> sauce stand **TUCANO**  
texture Aghi - 19x11 h 7  
**9161** silver plated



^ salt & pepper **BEPOP**  
texture Aghi - 6x4 h 7  
**9152** silver pl. - **9152R** platinum pl.  
**19152** sterling silver gr. 220



^ rectangular small tray **PASSIONI**  
texture Aghi - 15x10  
**9153** silver pl. - **9153R** platinum pl.  
**19153** sterling silver gr 120



^ tabasco holder **AQUARIUS**  
texture Aghi - h 16 dm 4  
**9301** silver pl. - **9301R** platinum pl.



^ 7806 salt & pepper **VELVET 1**  
11x5 h12 - texture Canapa -light gold

^ 7807 oil & vinegar stand **VELVET 1**  
15x6 h 24 - texture Canapa - light gold



^ 9203 salt and pepper **QUADRI** – design Enrico Z  
texture AGHI, shiny silver plated – 10 x 5 h. 13



^ cruet set **DROP**  
texture Aghi raggiera - dm 15 h 21  
9305 silver plated - 9305R platinum plated



^ 9805 cruet set **VELVET**  
texture Velvet - silver plated - 16x14 h16



^ 0305 cruet set **ITALIA**  
plus pated - 21x14 h 21



^ 2105 cruet set **BINARIO**  
plus plated - 21x7 h 22

Serving dishes





^ 2132-2133 rectangular dish  
BINARIO - plus plated  
38 (46) x 25 - 42 (52) x 28



^ 2139-2140-2141 oval dish  
BINARIO - plus plated  
32(40)x23 - 36(45)x 26 - 40(50)x29



^ 2138 round dish BINARIO  
plus plated - dm 27 (34) h 6



^ 2145 giant rectangular dish BINARIO  
plus plated - 53 (65) x 32 h 9



^ 2134 soufflé dish BINARIO  
plus plated - dm 19 (25) h 8



^ 2135-2136 round spaghetti dish  
BINARIO - plus plated  
dm 30 (41) h 8 - dm 36 (51) h 9



^ 2137 soup-tureen BINARIO  
plus plated - dm 31 (46) h 15



^ 2160 round dish **BINARIO**  
plus plated - dm 45 (56)



^ 2182 oval dish **BINARIO**  
plus plated - 48 (60) x 39



^ 2185 oval dish **BINARIO**  
plus plated - 48(59)x 33 h 9



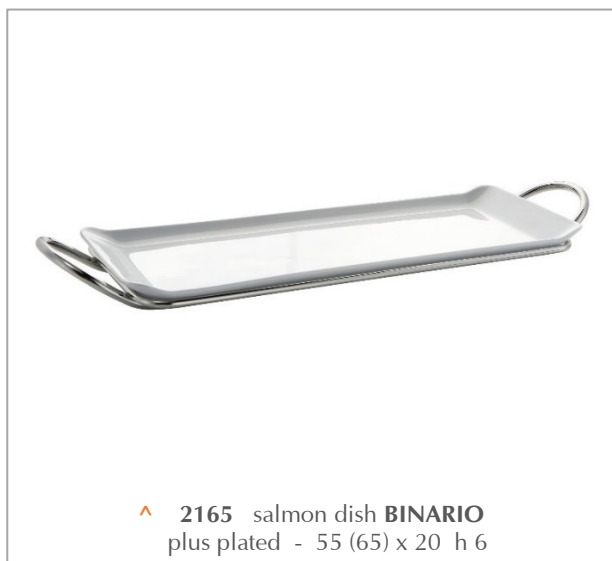
^ 2131 serving dish double **BINARIO**  
plus plated - dm 40(54) h 7



< 2127 vegetable dish **BIS**  
plus plated - dm 36 (51) h 9



^ 2187 fish tray **BINARIO**  
plus plated - 65 (74) x 26



^ 2165 salmon dish **BINARIO**  
plus plated - 55 (65) x 20 h 6



^ 2189 rectangular tray **BINARIO**  
with heat-resistant glass  
plus plated - 38 (50) x 32 h 5



^ 2188 rectangular dish server **BINARIO**  
plus plated - 47(64) x 32 h 9



< 7840 oval dish container **VELVET 1**  
texture Canapa - light gold - 46x24 h 8

> 7838 round dish container **VELVET 1**  
texture Canapa - light gold - 37x26 h 8





V 9332 rectangular dish **AQUARIUS**  
texture Aghi - 47 x 24  
silver plated



V 9338 round dish **AQUARIUS**  
texture Aghi - dm 28  
silver plated

V 9340 oval dish **AQUARIUS**  
texture Aghi - 43 x 24  
silver plated





^ **9840** oval dish **VELVET**  
texture Velvet - 43x27 h 6  
silver plated



^ **9832** rectangular dish **VELVET**  
texture Velvet - 45x27 h 5  
silver plated



^ **9836** spaghetti dish **VELVET**  
texture Velvet - 37x32 h 6  
silver plated



^ **0136** round spaghetti dish **ITALIA**  
plus plated - dm 43 h 6



^ **0131-0132** rectangular dish **ITALIA**  
plus plated  
39 x 24 - 44 x 28



^ **0140-0141** oval dish **ITALIA**  
plus plated  
41 x 30 - 45 x 34



^ **0138** round dish **ITALIA**  
plus plated - dm 32 h 6



^ **0134** souffli dish **ITALIA**  
plus plated - dm 26 h 9

V 0233 rectangular dish container  
with cover **ITALIA** - 44x28  
plus plated



V 0243 round dish container  
with cover **ITALIA** - dm 32  
plus plated



V oval dish container  
with cover **ITALIA** - plus plated  
0245 41x30 - 0246 45x34



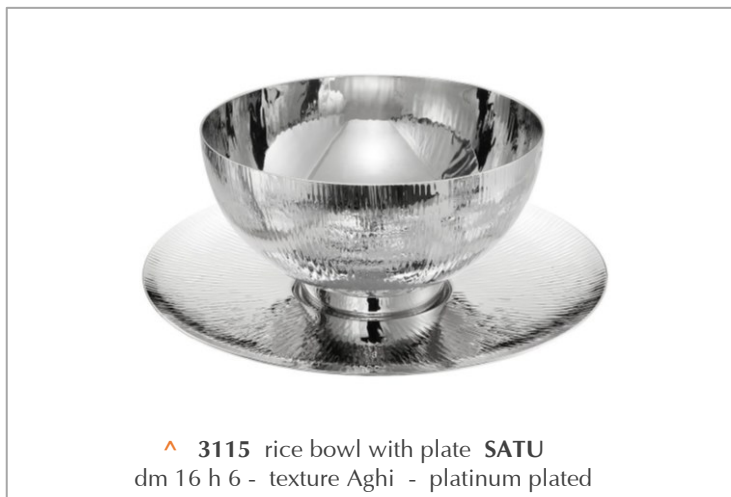


^ fish plate with cover **ITALIA**  
silver plated - 68 x 28 h 11  
**0088** without dripper (2 pcs)  
**0089** with dripper (3 pcs)

^ fish plate **ITALIA**  
silver plated - 68 x 28  
**086** without dripper - **0087** with dripper (2 pcs)



^ **9351** soup-tureen **SATURNO**  
texture Aghi - dm 36 h 27 - cap. lt 8  
silver plated



^ **3115** rice bowl with plate **SATU**  
dm 16 h 6 - texture Aghi - platinum plated



^ caviar bowl **GODMAN**  
texture Aghi - dm 16 h 9  
**9337** silver plated - **9337R** platinum plated  
**19337** Sterling silver gr 440



^ **9336-2** small caviar bowl **MAN**  
texture Aghi - dm 14 h 8 - silver plated



^ **2147** caviar bowl **BINARIO**  
plus plated - 26x19 h 9

Product made of two metal layers; a silver plated alloy layer on the outside and a stainless steel one on the inside. Between the two layers there is a space filled with one centimeter thick insulating material. The insulated ice-cream bowl/soup tureen maintains food temperature for a long time: it is ideal for cold food such as ice-cream or for hot food such as soups.



## Thermal dishes

- > round ice-cream bowl / thermic dish container - texture Aghi orizzontale - shiny  
 silver plated outside (varnished), stainless steel inside: **9369** dm 24 h 17  
 light gold outside (varnished), stainless steel inside: **9369B** dm 24 h 17



- ^ round thermic dish container – hot/cold – big - texture Aghi orizzontale - shiny  
 silver plated outside (varnished), stainless steel inside: **9370** dm 33 h 20 – **9370-2** dm 38 h 23 - **9371** dm 43 h 25  
 light gold outside (varnished), stainless steel inside: **9370B** dm 33 h 20 – **9370-2B** dm 38 h 23 – **9371B** dm 43 h 25



^ oval thermic dish container (hot / cold)  
 texture Aghi orizzontale - shiny - 41x29 h 23  
 silver plated outside (varnished), stainless steel inside: **9360**  
 light gold outside (varnished), stainless steel inside: **9360B**



< ^ Hermetic belt with handle **OUTDOOR**  
 Smooth & shiny - dm 33 h 20  
**E0070** varnished silver plated  
**E0070L** varnished light gold



^ > Round TRAVEL thermic dish/ice-cream bowl **SAFARI**  
 Shiny, texture Aghi - dm 33 h 20  
**E9370** varnished silver plated  
**E9370L** varnished silver plated & light gold



**Trenchers & Cheese dishes**



^ **9590** tray with Carrara marble **VIAREGGIO**  
 design Enrico Z – smooth and shiny,  
 varnished silver plated - 37 x 30 h. 8



^ **9275** rectangular tray with wood trencher **UNO**  
 design Enrico Z - texture AGHI, shiny  
 varnished silver plated - 35 x 26 h. 5





^ 0180 round cheese plate with trencher **ITALIA**  
plus plated - beechwood - dm 36



^ 0163 cold cuts dish with trencher **ITALIA**  
plus plated - beechwood - 46x20



^ 0175 rectangular meat dish with trencher **ITALIA**  
plus plated - beechwood - 64x32



^ 2186 oval trencher **BINARIO**  
plus plated - beechwood - 51(58)x36



^ 2181 round trencher **BINARIO**  
plus plated - beechwood - dm 30 (37)



^ 2183 cheese plate with cover **BINARIO**  
plus plated - dm 27 h 14



Cakes & Sweets



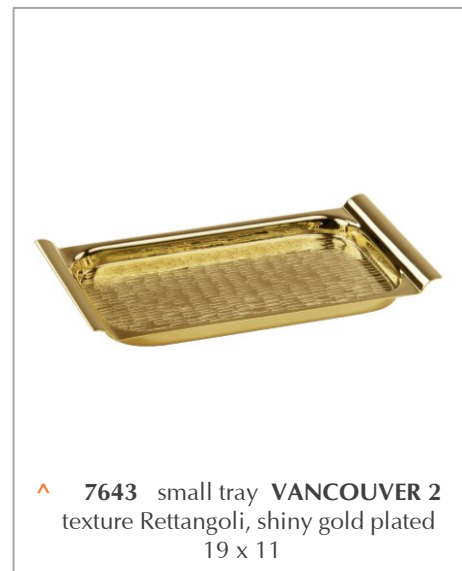
GOLDEN SWEETS  
collection



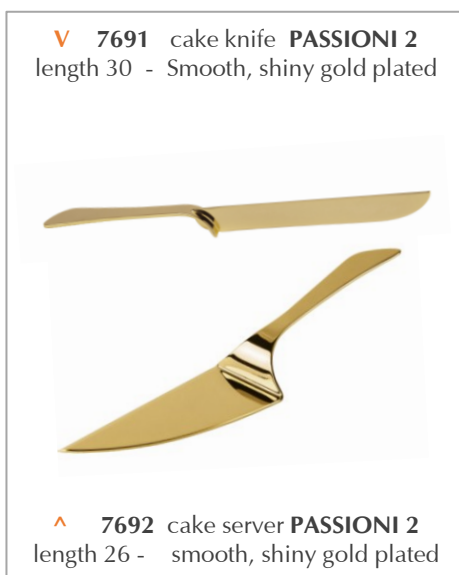
The cold enamel meets the gold for an exquisite and refined table setting. Give the best value to the sweets moments. Designed to make every dessert look instantly more delectable, this collection features serving pieces that combine Zanetto's intricate textured-finishes, sophisticated gold plating and a beautiful pale blue enamel.



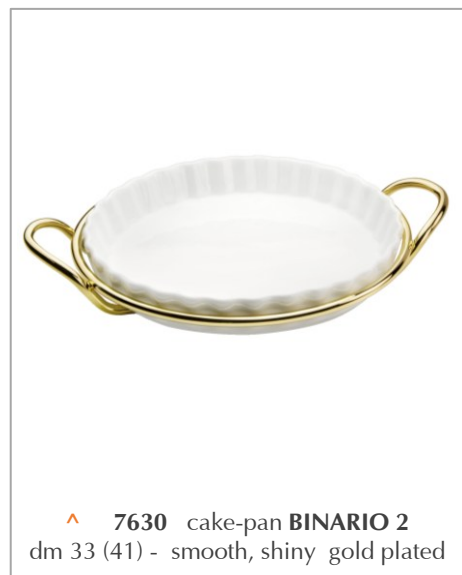
^ 7659 rectangular tray **VANCOUVER 2**  
texture Rettangoli, shiny gold plated - 64 x 11



^ 7643 small tray **VANCOUVER 2**  
texture Rettangoli, shiny gold plated  
19 x 11



v 7691 cake knife **PASSIONI 2**  
length 30 - Smooth, shiny gold plated



^ 7630 cake-pan **BINARIO 2**  
dm 33 (41) - smooth, shiny gold plated



^ 7680 pleasures offer **KIWI 2**  
Texture Aghi - shiny gold plated, enamel  
dm 21 h 13



^ dessert cutlery set **BAROCCO 2**  
shiny gold plated  
08/4/G fruit fork - 17 x 2  
08/5/G fruit knife - 21 x 2  
08/6/G little spoon - 13 x 3





^ 7651 tumbler **ARQO 2**  
smooth, shiny gold plated, enamel  
dm 8 h 9



^ 7652 cold drinks pitcher **COIMBRA 2**  
smooth, shiny gold plated  
dm 20 h 20



^ 7626 bowl **EASTER 2**  
Texture Cortecchia – shiny gold plated,  
enamel - 13 x 10 h 9



^ 7694 small stand **COMETA 2**  
texture Aghi - shiny, gold plated  
h 20 dm 16



^ 7685 cake stand **SOLE 2**  
texture Aghi - shiny, gold plated  
dm 33 h 12



< 7687 cake stand with  
cover **SOLE 2**  
texture Aghi  
shiny, gold plated  
dm 33 h 33



^ 9243 small rect. Tray **VANCOUVER I**  
text. Rettangoli - silver pl. - 19x11



^ 9243-2 small rect. Tray **VANCOUVER**  
smooth - silver pl. - 19x11



^ 9245 small rect. Tray **VANCOUVER II**  
text. Rettangoli - silver pl. - 23x12



^ 9272 small rect. Tray **VANCOUVER III**  
text. Rettangoli - silver pl. - 27x10



^ 9257 small sq. tray **VANCOUVER IV**  
text. Rettangoli - silver pl. - 20x19



^ 9528 cookie jar **VIE**  
texture Vie - silver plated - h 23 dm 20



^ 2130 cake-pan **BINARIO**  
plus plated - dm 33 (41)



^ 2179 cake plate **BINARIO**  
plus plated - dm 36 (46)



^ 9385 cake stand **SOLE**  
texture Aghi - silver plated - dm 33 h 12



^ 9387 cake stand with cover **SOLE** - dm 33 h 32,5  
9386 cover **SOLE** - dm 32 h 20,5  
silver plated, plexiglass



^ small stand **DROP**  
texture Aghi - h 16 dm 16-11  
9395 silver plated - 9395R platinum plated



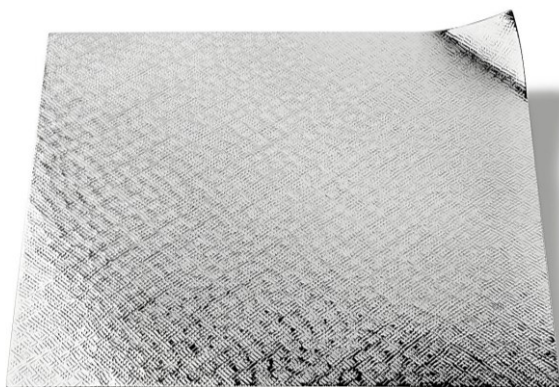
^ 9394 small stand **COMETA**  
texture Aghi - silver plated - h 20 dm 16-11



^ etagère **AQUARIUS**  
texture Aghi - silver plated  
9396 2 plates -h 34 dm27-20  
9397 3 plates-h53 dm33- 27-20

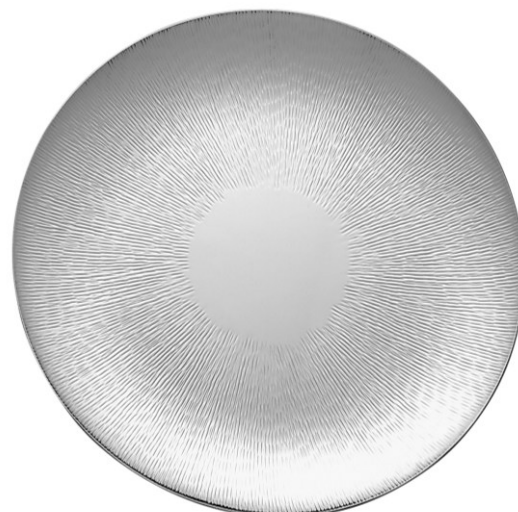
Your table place





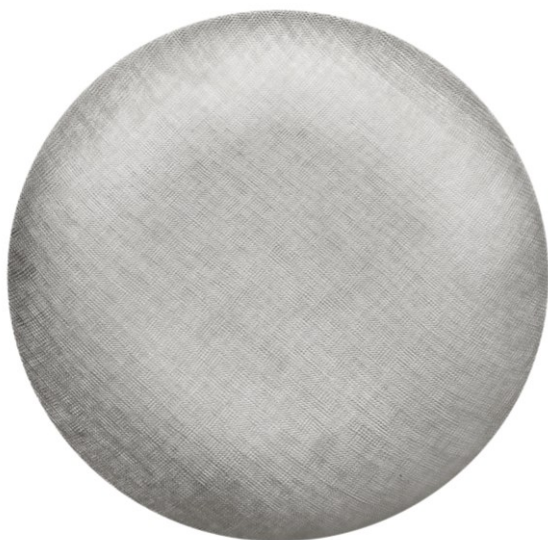
^ plate **UNO** - texture Intreccio - shiny

underplate - 31x31 - **9291** silver pl. - **9291B** brass  
 coaster - 9x9 - **9292** silver pl. - **9292B** brass  
 bread plate/underbottle - 13x13 - **9293** silver pl.  
**9293B** brass



^ plate **SOLE** - texture Aghi - shiny

underplate - dm 33 - **9381** silver plated  
 coaster - dm 9 - **9382** silver plated  
 bread plate/underbottle - dm 13,5 - **9384** silver pl.  
 decanter plate - dm 16 - **9384-2** silver plated



^ plate **VELVET** - texture Velvet - matt

underplate - dm 33 - **9891** silver plated  
 coaster - dm 12 - **9892** silver plated  
 bread plate/under bottle - dm 14 - **9894** silver plated



^ plate **ITALIA** - smooth - shiny

underplate - dm31 - **0291** silver pl. - **1291** sterling silv.  
 coaster - dm12 - **0292** silver pl. - **1292** sterling silver  
 bread plate - dm14 - **0293** silver pl. - **1293** sterling silv  
 Under bottle - dm16 - **0294** silver pl. **1294** sterling s.  
 Decanter plate - dm 19 - **0295** silver plated



^ dinner plate **SUN** – dm 33 – text. Aghi  
**3001H** Gold PVD - **3001M** Red PVD



^ dinner plate **NUVOLA** – dm 33 – Palline  
**3002H** Gold PVD - **3002M** Red PVD



> **9237** napkin ring **ANGOLO**  
 silver plated & brass, texture ACQUA – dm 5  
 design *Filippo Fiora & Filippo Cirulli*

> **9117-4** napkin ring **LINEA**  
 design Enrico Z – texture AGHI, shiny silver plated  
 5,5 x 3 x 1,5





^ 6318A napkinring **SILVER RIBBON**  
set 4 pcs - silver plated - 3x5,5x3,5



^ 6318B napkinring **GOLD RIBBON**  
set 4 pcs - brass - 3x5,5x3,5



^ 6318C napkinring **PINK RIBBON**  
set 4 pcs - copper - 3x5,5x3,5

> napkin ring / cutlery rest BIPOP  
texture Aghi - shiny - 7 x 3  
9117 platinum plated



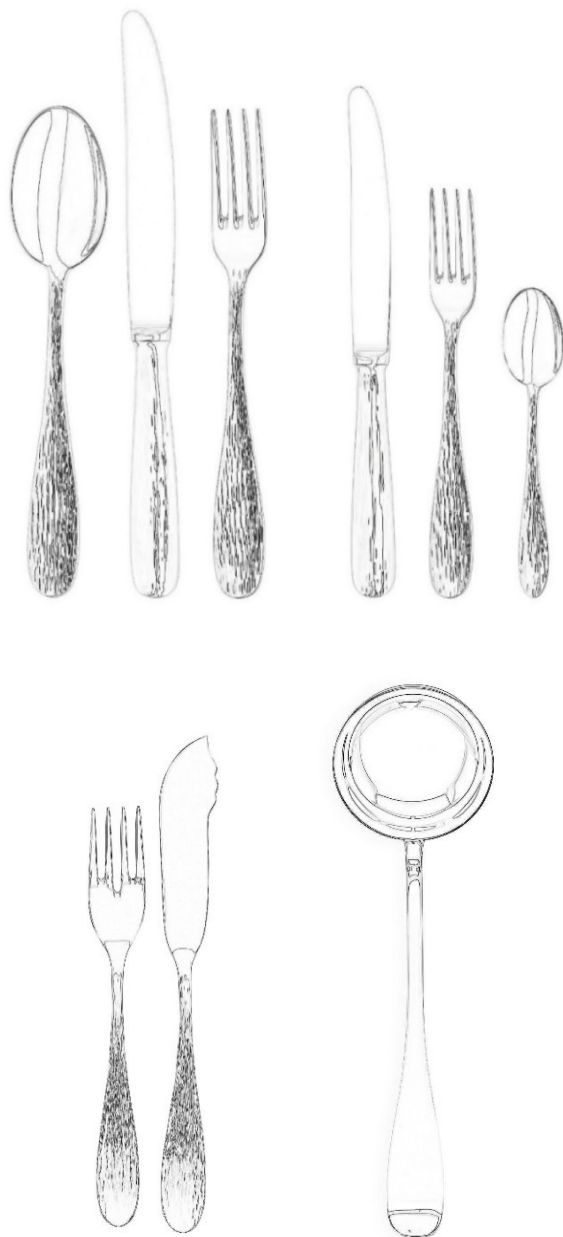
v 9116 - napkin-rings couple DOBLO  
texture Sahara (female) and Aghi (male)  
silver plated - polished & satin - 6 x 7



Your flatware



## Available Pieces



\* ask to our offices terms and details of supply of any special piece

## Finishes

### A - SILVER

Silver, defined as a lunar precious metal by virtue of its exceptional whiteness, is our most historical finish. We craft this metal in various ways, from satin-finished to pure transparency for unrivalled results in terms of style and elegance.

ON REQUEST:

### R - PLATINUM

Platinum is a silver metal tending on white, offering optimal hardness and an excellent degree of resistance to corrosion. It belongs to the platinum category and is the most precious metal in the world: a feature that depends both on the difficulty of extraction and its extremely limited availability. Platinum plating results in an impressive shine, with extraordinary reflective properties, increasing resistance to abrasion and oxidation, while improving the aesthetic impact of the article, giving it a more polished look and ensuring a durable, wear-resistant finish.

### G - GOLD PATED

The real gold is deposited on the surface by means of electroplating and it is practically pure, lending the object all of the precious metal's virtues – magnificence, nobleness and incorruptibility.

### PVD

### H = GOLD - M = RED

PVD – physical vapour deposition (titanium/zirconium treatment)  
 PVD is a technology used for the deposition of thin metal films. The process is performed in a vacuum, and as it is a physical process it offers superior characteristics with respect to any other chemical or electrochemical treatment. PVD is ideal for all quality products needing high chemical-physical performance and can obtain a wide variety of colors. Its many virtues include: exceptional surface hardness (1000:2500 HV); optimal resistance to wear, scratching and abrasion; resistance to corrosion; resistance to UV rays; resistance to acid solvents, alkalis and domestic products; resistance to perspiration; hypo-allergenic; negligible environmental impact.

### D - BURNISHED

A finishing method performed entirely by hand, it induces oxidation of the metal through the application of various substances and heat to create unique decorative and colour effects. The object is then covered with a coat of beeswax, which provides lasting protection from alterations.





^ 01 model ACQUA

texture Aghi  
surface shiny

A silver plated



^ 02 model **ARIA**

texture Velvet  
surface matt

A silver plated



^ 03 model RIFLESSI

smooth  
surface shiny

A silver plated



^ 04 model RAIN

texture Aghi  
surface shiny

A silver plated



^ 05 model ETHER

texture Canapa  
surface matt

A silver plated



▲ 06 model **MIROIR**

smooth  
surface shiny

A silver plated



^ 08 model **BAROQUE**

smooth  
surface shiny

A silver plated



^ **01/10** fish fork & knife model **ACQUA**  
 texture Aghi - surface shiny  
**A** silver plated



^ **02/10** fish fork & knife model **ARIA**  
 texture Canapa - surface matt  
**A** silver plated



^ **03/10** fish fork & knife model **RIFLESSI**  
 smooth & shiny  
**A** silver plated



^ **LADLE**  
 available in the models:  
**01/13 ACQUA - 02/13 ARIA - 03/13 RIFLESSI**



^ 01/35 pair of chopsticks **ACQUA**  
design Enrico Z – texture AGHI  
shiny silver plated – l. 23,50

^ 02/35 pair of chopsticks **ARIA**  
design Enrico Z – texture CANAPA  
shiny silver plated – l. 23,50

Serving cutlery  
and table accessories



v 7856 spaghetti server VELVET 1  
Gold PVD - l. 26



^ 9856 spaghetti server VELVET  
Silver plated - l. 26

v 7853 lasagne server VELVET 1  
Gold PVD - l. 26



^ 9853 lasagne server VELVET  
Silver plated - l. 26

v 7854 rice server VELVET 1  
Gold PVD - l. 26



^ 9854 rice server VELVET  
Silver plated - l. 26

v 7800 cheese spoon VELVET 1  
Gold PVD - l. 13



^ 9800 cheese spoon VELVET  
Silver plated - l. 13



^ 9524 ice-cream spoon VIE  
Silver plated - l. 23



^ 0049 ice-cream spoon ITALIA  
silver plated - l. 24



^ 0051 ice spoon ITALIA  
Silver plated - l. 26



^ 9192 cake server PASSIONI  
silver plated - l. 26



^ 9191 cake knife PASSIONI  
silver plated - l. 30



^ 9193 set 2 pcs cake server PASSIONI  
silver plated



^ 0052 cake server **ITALIA**  
silver plated - l. 29



^ 0053 lasagne server **ITALIA**  
silver plated - l. 27



^ 0054 rice server **ITALIA**  
Silver plated - l. 26



^ 0056 spaghetti server **ITALIA**  
Silver plated - l. 28



^ 0106 spaghetti tongs **ITALIA**  
Silver plated - l. 26



^ 0107 bread tongs **ITALIA**  
Silver plated - l. 23



^ 0108 asparagus tongs **ITALIA**  
Silver plated - l. 27



^ 0109 sweet tongs **ITALIA**  
Silver plated - l. 26



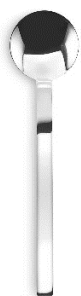
^ 0058 hors-d'oeuvre spoon **ITALIA**  
Silver plated - l. 16



^ 0059 hors-d'oeuvre fork **ITALIA**  
Silver plated - l. 16



^ 0057 sugar cube tongs **ITALIA**  
Silver plated - l. 8



^ 9300 little spoon **AQUARIUS**  
Silver plated - l. 15



^ 0200 little spoon **ITALIA**  
Silver plated - l. 14



^ 0201 ladle **ITALIA**  
Silver plated - l. 31



^ 0248 ice tongs **ITALIA**  
Silver plated - l. 20



^ 0549 roast fork **ITALIA**  
Silver plated - l. 25



^ 0550 roast knife **ITALIA**  
Silver plated - l. 30



^ 0552 cheese knife **ITALIA**  
Silver plated - l. 21



^ 0553 grana knife **ITALIA**  
Silver plated - l. 15



^ 0554 butter knife **ITALIA**  
Silver plated - l. 16



^ 0343 sum plate **EYE** - plus plated - 16x10 h 3



^ 9120 trivet **NASTRO** dm 18 h 2  
texture Cortecchia - nickel plated



^ 0226 small round warmer **ITALIA**  
plus plated - dm 12 h 7



^ 0227 round rechaud **ITALIA**  
plus plated - dm 20 h 7



^ 0228 oval rechaud **ITALIA**  
plus plated - 32 x 19 h 7



^ 0229 rectangular rechaud **ITALIA**  
plus plated - 31 x 18 h 7



### food warmers

Featuring a simple, elegant design, the food warmers keep dishes served at the table warm. It is very easy to use – just insert one or two tea candles in the special holders and place the serving dish (made of a heat-safe material like porcelain or heat-resistant glass) on the raised base.

THE CLASSICS



**DERBY** interprets the most classical English style and is for the most demanding: the characteristic edging is hand made and soldered. Excellent silverware craftsmanship also in the silver-plated alloy.



^ Oval tray **DERBY** - smooth & shiny  
 Silver plated: **00485** 48 x 35 - **00486** 54 x 39  
 Sterling silver: **01485** 48 x 35 gr. 1.200  
**01486** 54 x 39 gr. 1.650

^ Oval tray with handles **DERBY** - smooth & shiny  
 Silver plated: **00485-1** 48 x 35 - **00486-1** 54 x 39  
 Sterling silver: **01485-1** 48 x 35 gr. 1.500  
**01486-1** 54 x 39 gr. 1.950



^ Rectangular tray **DERBY** - smooth & shiny  
 Silver plated: **00488** 38 x 26 - **00489** 43 x 30  
**00490** 48 x 34 - **00498** 52 x 38 - **00499** 63 x 50  
 Sterling silver: : **01488** 38 x 26 gr 920  
**01489** 43 x 30 gr. 1150 - **01490** 48 x 34 gr. 1500  
**01498** 52 x 38 gr 2.000



^ Rectangular tray with handles **DERBY** - smooth & shiny  
 Silver plated: **00488-1** 38 x 26 - **00489-1** 43 x 30  
**00490-1** 48 x 34 - **00498-1** 52 x 38 - **00499-1** 63 x 50  
 Sterling silver: : **01488-1** 38 x 26 gr 1.120  
**01489-1** 43 x 30 gr. 1350 - **01490-1** 48 x 34 gr. 1780  
**01498-1** 52 x 38 gr 2.300

v plate **INGLESE** - smooth & shiny  
 Under plate massive border dm 31:  
 silver plated **00491** - sterling silver **01491** gr. 560  
 Under plate rounded border dm 31:  
 silver plated **00591** - sterling silver **01591** gr. 495  
 Coaster dm 10: silver pl. **00592** - sterling s. **01592** gr. 50  
 Bread plate dm 12: silver p. **00593** - sterling s. **01593** gr. 65  
 Bread plate dm 14: silver plated **00593-2**  
 Underbottle dm 14: silver p. **005594** - sterling s. **01594** gr90



^ tall underbottle **DERBY** - smooth & shiny - dm 14 h 4  
 Silver plated: **00494**  
 Silver plated & plexiglass **00494-2**



^ plate **BAROCCO** - smooth & shiny - silver plated  
 Underplate **02491** dm 31  
 Bread plate / underbottle **02494** dm 15



^ thermic ice-bucket **DERBY** - smooth & shiny  
Silver plated / insulated san container  
**00465** h 22 dm 16



^ Glacette **DERBY** - smooth & shiny - h 22 dm 14  
Silver plated / insulated san container **00466**  
Sterling silver /insulated san container **01466** gr. 850



^ pitcher **BRUGES** - smooth & shiny  
Silver plated: **00501** h 24 dm 12



^ Champagne bucket **DERBY** - smooth&shiny - h 23 dm 21  
Silver plated **00468** - sterling silver **01468** gr 1.130  
Ice-bucket **DERBY** - smooth & shiny  
Silver plated **00467** dm 15 h 16



^ thermic piotcher **RIGATA**  
smooth&shiny - screw closing cup  
Silver plated: **00565** h 27 lt 050 -  
**00566** h 30 lt 0,75 - **00567** h 33 lt  
1,00

**Thermic pitcher RIGATA +**  
smooth & shiny - press closing cup  
Silver plated **0566-2** h 30 lt 0,75



- < **tea and coffee set LONDON**  
smooth & shiny  
**COMPLETE SET (5 pcs):** silver plated  
**00415** - sterling silver **01415** gr. 3.200  
**Coffe pot LONDON** 19x15 dm 11:  
silver plated **00411**  
sterling s. **01411** gr. 650  
**Tea-pot LONDON** 18x16 dm 12:  
silver pl. **00412** - sterling s. **01412** gr. 660  
**Sugar-bowl LONDON** 11x13 dm 10:  
silver plated **00413**  
sterling silver **01413** gr. 370  
**Milk-jug LONDON** 10x13 dm 10: silver  
pl. **00414** - sterling silver **01414** gr 310  
**Rectangular tray LONDON** 44x31:  
silver plated **00410**  
sterling silver **01410** gr. 1.220



^ round basket **DERBY** - smooth & shiny  
Silver plated **00422** dm 26 h 6



^ oval basket **DERBY** - smooth & shiny  
Silver plated **00424** 26x19 h 8



^ dish container **DERBY** - smooth & shiny - silver plated (pyrex glass inside)  
**OVAL: 00445** 41x30 - **00446** 45x34  
**RECTANGULAR: 00433** 44x28



^ Round centrepiece **CORDOBA** - smooth & shiny  
Silver plated **00532** dm 27 h 14

v rectangular Butter holder **DERBY** - smooth & shiny  
silver plated-plexiglass **00430** 19x13 h 8



^ round indi. Butter holder **DERBY** - smooth & shiny  
silver plated-crystal glass **00403** dm 11 h 9



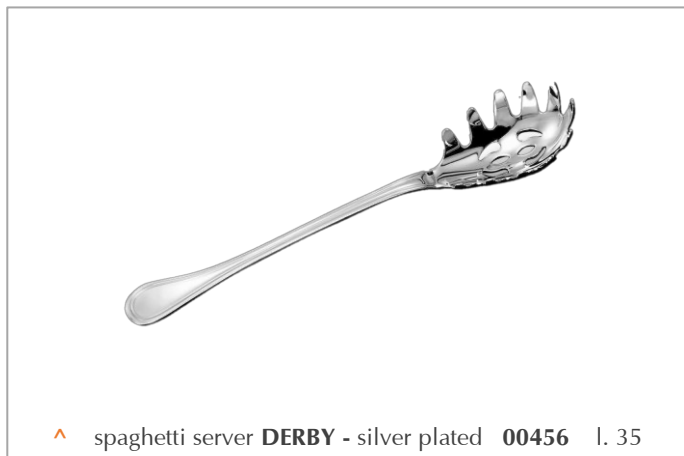
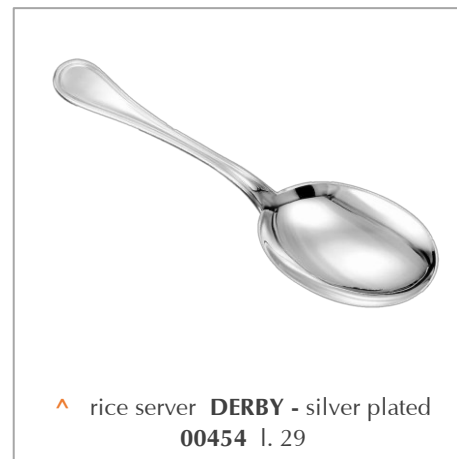
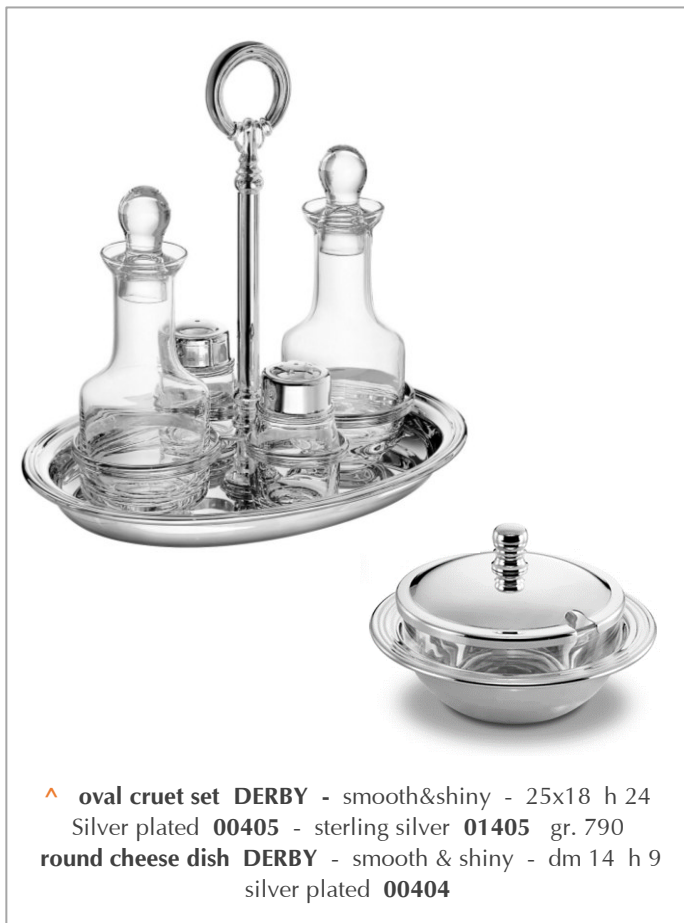
^ sauce stand **DERBY** - smooth & shiny - 24x11 h 10  
silver plated **00461** - sterling silver **01461** gr. 350



^ Etagere with plates **COLONY**  
smooth & shiny – silver plated  
**00595** 2 plates h 33 dm 20-16  
**0596-2** 2 plates h 44 dm 31-24  
**00596-3** 3 plates h 60 dm 38-31-24



^ Etagere with bowls **COLONY**  
smooth & shiny – silver plated  
**00597-2** 2 bowls h 44 dm 31-24  
**00597-3** 3 bowls h 60 dm 38-31-24



**PERLES**

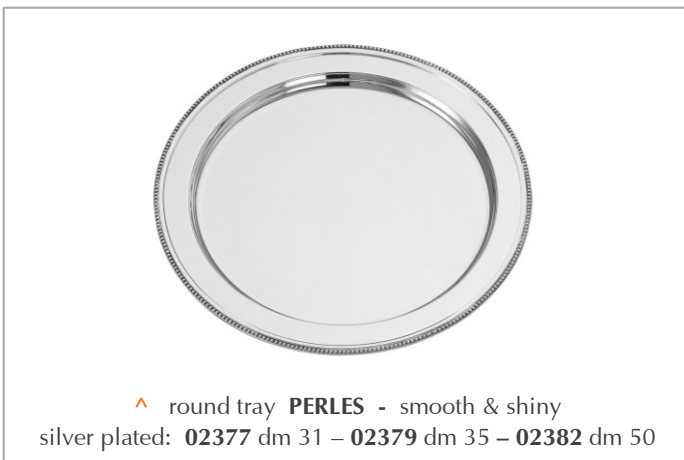
This is a classical decoration,  
 interpreted with grace and  
 elegance and not overdone.  
 Original lines, rounded layers,  
 animated and nimble bodies for  
 objects designed  
 to carry out new functions.  
 All edges are hand done  
 and soldered.  
 The added parts are made  
 with the lost wax casting  
 method.  
 The decorative elements  
 are burnished.

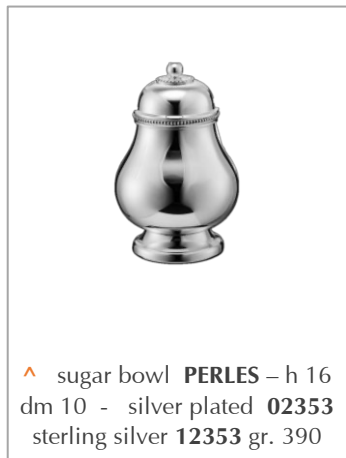


^ Oval centrepiece **PERLES** - 35x25 h 14  
 silver plated **02334** - sterling silver **12334** gr. 1.300



^ round centrepiece **PERLES** - smooth & shiny  
 silver plated **02349** dm 29 h 17







^ oval champagne bucket **PERLES** - smooth & shiny silver plated: **02357** 26x18 h 19



^ thermic ice bucket **PERLES** - smooth & shiny silver plated / insulated san container **02365** dm 16 h 20



^ oval basket **PERLES** - smooth & shiny – 28x20 h 8 silver plated **02324-2** - sterling silver **12324-2** gr. 430



^ square basket **PERLES** - smooth & shiny – 18x18 h 5 silver plated **02313** - sterling silver **12313** gr. 450



^ caviar bowl **PERLES** - smooth & shiny silver plated **02358** dm 18 h 11



^ cruet set **PERLES** - smooth & shiny - 22x17 h 22 silver plated **02305** - sterling silver **12305** gr. 590

^ cheese dish **PERLES** - smooth & shiny - dm 12 h 8 silver plated **02302** - sterling silver **12302** gr. 220

# REGINA ANNA

Zanetto has reimagined their **Regina Anna** collection, creating a modern take on a classic design. The relaunch features new pieces to complement the collection, allowing for a more complete and versatile choice. The collection is available in both silver and gold finishes, offering a wide range of options to suit any style. This classic collection has been reimagined for the modern era, while retaining its timeless charm. Whether you're looking to add to your existing collection or starting fresh, the Regina Anna collection is a must-have.



**REGINA ANNA** It is the reinterpretation of a style created in England at the beginning of the eighteenth century that we appreciate for its surprising linearity and sobriety. Its peculiarity is the typical cord design on the edges and the lion head with ring. All edges are hand done and soldered. The added parts are made with the lost wax casting method. The decorative elements are burnished.



REGINA ANNA

New Collection



^ liquor cup **REGINA ANNA** - dm 5 h 7,5  
**0616** silver plated, gilded inside - **0616G** gold plated  
 ^ tumbler **REGINA ANNA** - dm 7,5 h 12,5  
**0617** silver plated, gilded inside - **0617G** gold plated



^ pitcher **REGINA ANNA** - h 28 dm 12  
**0664** silver plated - **0664G** gold plated



^ thermic ice bucket **REGINA ANNA** - dm 16 h 22  
**0665** silver plated - **0665G** gold plated  
 ^ glacette **REGINA ANNA** - dm 14 h 23  
**0666** silver plated - **0666G** gold plated



^ champagne bucket **REGINA ANNA** - dm 18 h 24  
**0668** silver plated - **0668G** gold plated  
 ^ ice bucket **REGINA ANNA** - dm 15 h 17  
**0667** silver plated - **0667G** gold plated

> cold drink pitcher **REGINA ANNA**  
smooth and shiny – h 26 dm 16 cap. Lt 2  
0657 silver plated / 0657G gold plated



< thermic pitcher **REGINA ANNA**  
smooth and shiny - h. 29 w15 (20) cap. Lt 1,5  
0677 silver plated / 0677G gold plated



^ triple snack holder **REGINA ANN**  
smooth and shiny – dm 20 h 16  
0631 silver plated / 0631G gold plated



^ rectangular butter-holder **REGINA ANNA**  
smooth and shiny – 19 x 13 h. 9  
0630 silver plated / 0630G gold plated



^ salt and pepper **REGINA ANNA**  
smooth and shiny – l. 11 h. 13  
**0606** silver plated / **0606G** gold plated



^ oil and vinegar **REGINA ANNA**  
smooth and shiny – l. 16 h. 25  
**0607** silver plated / **0607G** gold plated



^ round indiv. butter holder **REGINA ANNA** - dm 11 h 8  
**0603** silver plated - **0603G** gold plated  
^ sauce dish **REGINA ANNA** - dm 12 h 8  
**0604** silver plated - **0604G** gold plated



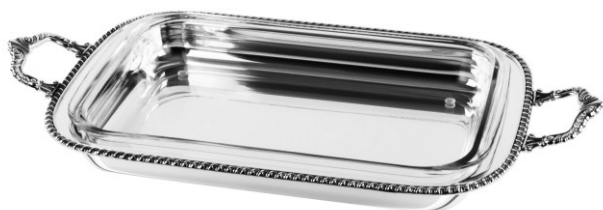
^ sugar basin **REGINA ANNA** - dm 12 h 10  
**0653** silver plated - **0653G** gold plated  
^ spoon **REGINA ANNA** - l. 12  
**0600** silver plated - **0600G** gold plated



^ round bowl **REGINA ANNA** - dm 12 h 5 / dm 16 h 6  
**0651** / **0652** silver plated - **0651G** / **0652G** gold plated



^ oval fruit bowl / centerpiece **REGINA ANNA**  
26 x 17 h 19 / 36 x 25 h 13  
**0654** / **0655** silver plated - **0654G** / **0655G** gold plated



- ^ rectangular dish container **REGINA ANNA** - 44 x 28  
0632 silver plated – 0632G gold plated
- ^ rect. dish container w/handles **REGINA ANNA**- 57 x 28  
0632-1 silver plated – 0632-1G gold plated



- ^ rect. dish container w/cover **REGINA ANNA** - 44 x 28  
0633 silver plated – 0633G gold plated
- ^ rect. dish container w/cover and handles **REGINA ANNA**  
57 x 28 - 0633-1 silver plated – 0633-1G gold plated



- ^ round dish container w/cover **REGINA ANNA**  
dm 33 h 14 - 0643 silver plated – 0643G gold plated
- ^ round dish container w/cover and handles **REGINA ANNA**  
45 x 33 h 14 - 0643-1 silver plated – 0643-1G gold plated
- > round dish container **REGINA ANNA** - dm 33  
0638 silver plated – 0638G gold plated
- > round dish container w/handles **REGINA ANNA** - 45 x 33  
0638-1 silver plated – 0638-1G gold plated



- ^ oval dish container **REGINA ANNA** - 41 x 30  
0640 silver plated – 0640G gold plated
- ^ oval dish container w/handles **REGINA ANNA** - 53 x 30  
0640-1 silver plated – 0640-1G gold plated



- ^ oval dish container w/cover **REGINA ANNA** - 41x30 h 15  
0645 silver plated – 0645G gold plated
- ^ oval dish container w/ cover and handles **REGINA ANNA**  
53 x 30 h 15 - 0645-1 silver pl. – 0645-1G gold plated



^ **0670** round thermic dish container **REGINA ANNA**  
silver plated, stainless steel inside - dm 33 h 20



^ **0670G** round thermic dish container **REGINA ANNA**  
gold plated, stainless steel inside - dm 33 h 20



^ caviar dish **REGINA ANNA**  
smooth and shiny - 19 x 13 h. 9  
**0658** silver plated / **0658G** gold plated



^ etagere 2 plates **REGINA ANNA**  
smooth and shiny - h. 20 dm 16 - 11  
**0695** silver plated / **0695G** gold plated



^ cake stand **REGINA ANNA**  
smooth and shiny - dm 35 h 12  
**0675** silver plated / **0675G** gold plated



^ plate **REGINA ANNA** - dm 31  
**0691** silver plated - **0691G** gold plated  
^ plate **REGINA ANNA** - dm 12 / dm 14 / dm 16  
**0692 / 0693 / 0694** silver plated  
**0692G / 0693G / 0694G** gold plated

v oval platter **REGINA ANNA** - 43 x 32  
 0623 silver plated - 0623G gold plated



^ round platter **REGINA ANNA** - dm 39  
 0620 silver plated - 0620G gold plated



^ oval tray **REGINA ANNA** - 42 x 30  
 0684 silver plated - 0684G gold plated

^ oval tray with handles **REGINA ANNA** - 47 (60) x 34  
 0685-1 silver plated - 0685-1G gold plated



^ rectangular tray **REGINA ANNA** - 42 x 29  
 0689 silver plated - 0689G gold plated

^ rectangular tray with handles **REGINA ANNA**  
 51 (60) x 38 - 0689-1 silver plated - 0689-1G gold plated



^ round tray **REGINA ANNA** - dm 35  
 0679 silver plated - 0679G gold plated



^ rectangular tray **REGINA ANNA** - 33 x 22  
 0687 silver plated - 0687G gold plated





## HOME DECOR

Decorating, creating an exceptional and unique living environment is a pleasure to give to others and to oneself. The Living line contains creations designed to decorate the home with style: vases, centerpieces, trays, candle holders, photo frames, room fresheners and more. Exquisite design objects, exclusively for those who love to surround themselves with refined beauty.

### Bowls & centerpieces

Vases

Candelabras & votives

Ambiance perfumers

Picture frames

Desk

Trays

Boxes & vide-poche

Home garden

Accessories



Trays

- v **7030** rectangular tray MORIOKA - design Enrico Z  
white bronze, brass, copper - shiny, varnished  
texture Palline & Scozzese - 54 x 31



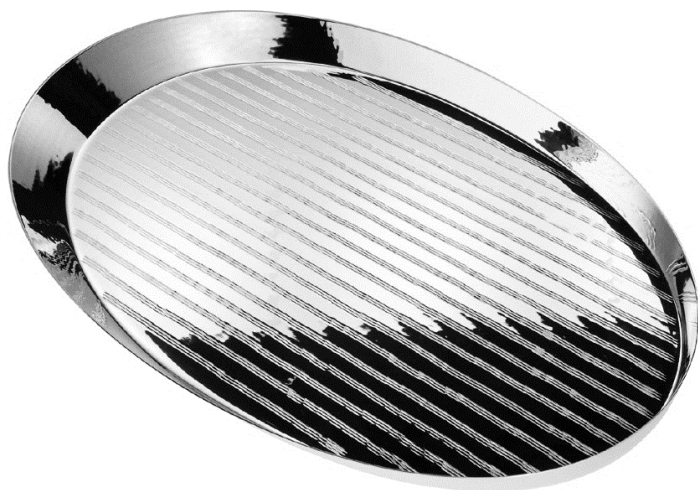
- ^ **9590** tray with Carrara marble VIAREGGIO  
design Enrico Z - smooth and shiny,  
varnished silver plated - 37 x 30 h. 8

< **V 7889** rectangular tray with handles - design Enrico Z  
 texture Canapa - light gold (varnished) - 41 (49) x 29

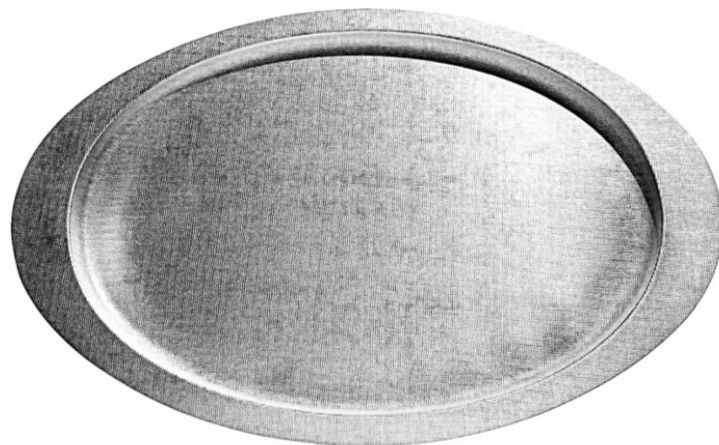


**v ^** Rectangular tray **PATCH** - design Enrico Z  
 texture mosaico (sahara & palline) - 48x31  
**9789** satin silver plated (varnished)  
**9789B** shiny brass (varnished)

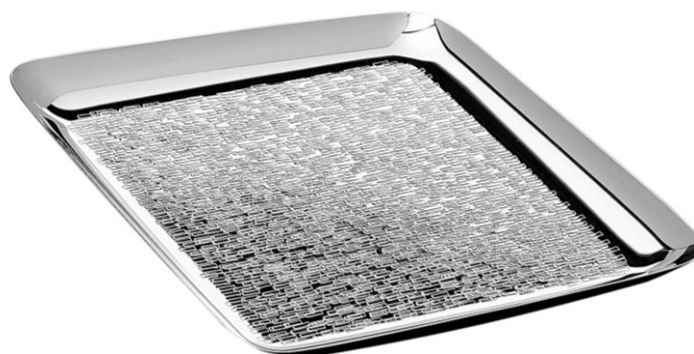




^ 9510 oval tray **VIE** - design Enrico Z  
texture vie - silver plated - 49x34 h 3



^ oval tray **VELVET** - design Enrico Z  
texture canapa - 53x34  
9885 silver plated - 9885G rosegold plated



^ 9157 square plate **TANGO** - design E&B Z  
texture rettangoli - plus plated - 32x32 h 3



^ 9156 rectangular plate **TANGO** - design E&B Z  
texture rettangoli - plus plated - 43x18 h 3

v rectangular tray **UNO** - design Enrico Z  
texture intreccio - silver plated  
9288 / 9290 - 38x25 / 48x33





^ rectangular tray **VANCOUVER** – design Enrico&Bernardo Z  
texture Rettangoli – 64x11 - **9159B** satin brass (varnished)



^ square tray **VANCOUVER** - design Enrico&Bernardo Z  
texture Rettangoli - 24x26  
**9158B** satin brass (varnished)

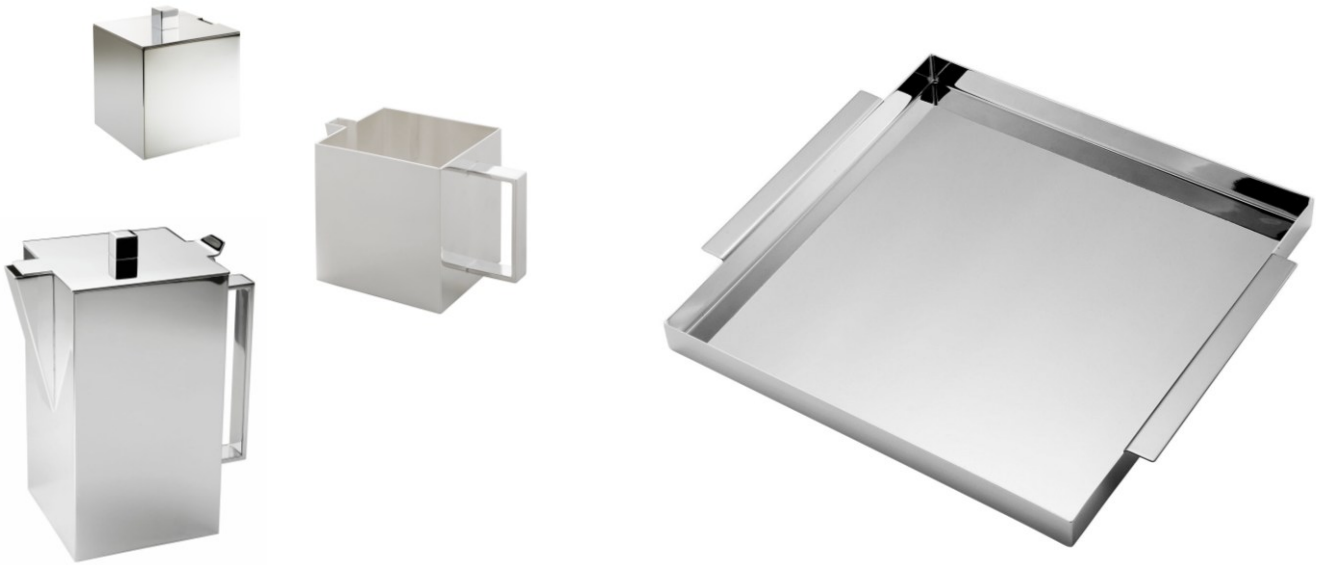
v square tray **VANCOUVER**  
design E&B Z - tex *rettangoli* -24x26  
**9158** silver pl. - **9158S** satin silver



> rectangular tray **VANCOUVER**  
design E&B Z - tex *rettangoli* -64x11  
**9159** silver pl. - **9159S** satin silver



^ rectangular tray **TORONTO** - design Enrico Z  
texture Aghi - 60x26 - **9575** silver plated



^ 9558 square tray **GAIA** - design Enrico Z  
smooth & polished - 41x36 h 3 - silver plated



^ 9559 rectangular tray **GAIA** - design Enrico Z  
smooth & polished - 52x37 h 3 - silver plated



^ 9390 rectangular tray **ISHRAM** - design Enrico Z  
texture aghi - silver plated - 45x31



- ^ tray **MADRAS** - Design Enrico Z  
 texture *aghi* - 50x35  
**9190** silver plated (varnished)  
**9190B** light gold (varnished)  
 Plane made of ebony Macassar wood



- ^ tray **TOGETHER** - design Enrico Z  
 smooth&shiny - 39x39  
**9196** plus plated - **9196B** shiny light gold  
 Zebrano wood plane



- ^ **9170** tray **CRETA** - design Enrico Z  
 smooth - silver plated (varnished) - 56x35  
 lacquered wood plane (red or black)

- ^ **9180** tray **ISI** - design Enrico Z  
 smooth & shiny - 50x36 - plus plated  
 Lacquered wood plane (red or black)



^ round tray **GALLERIA** – design E&B Z  
0780 plus pl. – 1780 sterling silver - dm 33 h 5



^ 0786 oval tray **GALLERIA** – design E&B Z  
plus plated - 50x35 h 5



^ round tray **BINARIO** - design Enrico Z  
2180 plus plated



^ round tray **ITALIA** - silver plated  
0278-0280 / dm 33 - 39



^ 0098 big tray **STADIO** - design Bernardo Z  
smooth&polished – silver plated - 76x63



^ rectangular tray **ITALIA** - silver plated  
**0287-0288-0289-0290-0298**  
 35x24 – 40x28 – 45x32 – 50x36 – 54x40



^ rect. tray with handles **ITALIA** - silver plated  
**0288-1/0289-1/0290-1/0298-1**  
 40x28 – 45x32 – 50x36 – 54x40



^ oval tray **ITALIA** - silver plated  
**0285-0286**  
 49x35 – 54x40



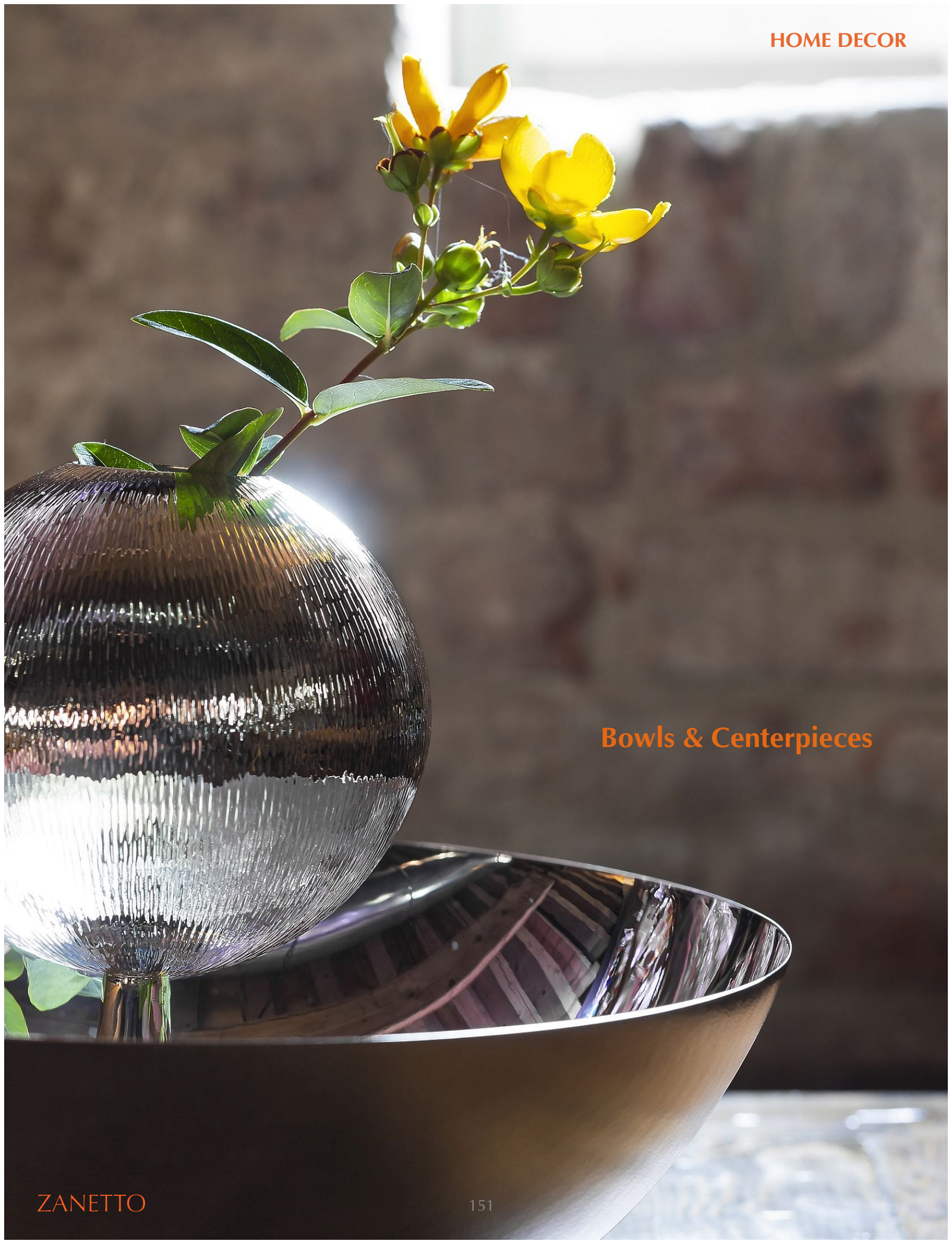
^ oval tray with handles **ITALIA** - silver plated  
**0285-1 / 0286-1**  
 49x35 – 54x40



^ square tray **ITALIA** - silver plated  
**0296-0297 / 32x32 – 39x39**



^ tray **AUTOSTRADA** - silver plated  
**0273 – 274 – 0275 39x19 – 48x24 – 64x32**



**Bowls & Centerpieces**

The unmistakable lustre of silver (silver plated with varnish finishing), with its clear and soft reflections, is enhanced by the singular shape of this centrepiece. Circular in the centre a sphere rises from the rippled surface. Like a drop of water it seems to dance on the mirror base, crystallizing the dynamics of the action in a frame.

A hymn to 'life', to the element that allows perpetuation and to which the ancient cultures dedicate ritual dances. The past, present and future are concentrated in a single object.



- ^ 9605 Centrepiece *BALLIAMO SUL MONDO*  
 Texture SAHARA & AGHI  
 silver plated (varnished) - dm 31 h 24  
 design Enrico Z

## I CUCITI (THE SEWING)

design Enrico Z



Vases and centrepieces of high craftsmanship, with details resembling precious darns, drawing the metal surface of these works of art, with limited numbering. The light reflects and refracts the colour of metals - copper, white bronze, brass - creating a visual and sensory play of rare suggestion. But the beauty and novelty of the collection is connected to the particularity of being 'counter-current'.

Today technology is able to program the life cycle of a product, determining duration and end. You can't repair it, you throw it away and you buy it again. The idea of "repaired" is transgressive. It is a gesture motivated by love for the object and for what it represents in the personal imaginary. Not only this. This means respect for our Planet, for its resources and for the future of all. A 'repaired' object contains many experiences. Similarly the wrinkles on a face narrate the life of its protagonist. In Japan - a culture that is sensitive and attentive to daily aesthetics - repairing broken objects is an ancient art, rich in submissive beauty: it is *Kintsugi*.

The presence of a cut, of a chip, of a nick, becomes a new language able to enrich the aesthetic vocabulary of the object.

In the collection *I CUCITI* (THE SEWING) this play is represented in a masterly manner.

The repair itself becomes decoration, creativity, uniqueness.

- V **7015B / 7016B** bowl **AICHI**  
 Texture CORTECCIA & SCOZZESE  
 brass, white bronze, copper  
 dm 16 h 10 – dm 23 h 13

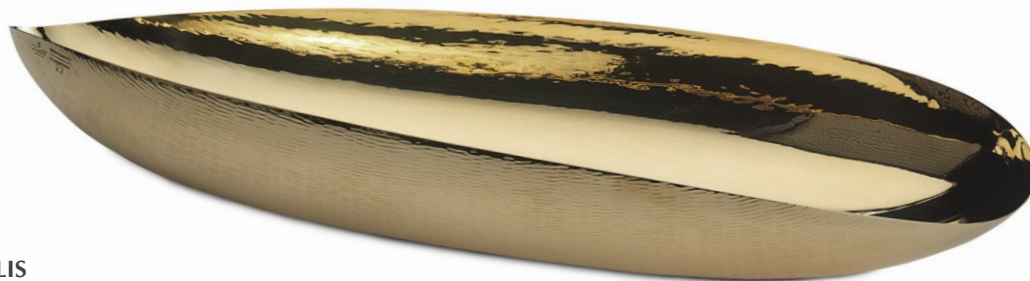


- V **7015W / 7016W** bowl **FUKUI**  
 Texture PALLINE & RETTANGOLI  
 white bronze, brass, copper  
 dm 16 h 10 – dm 23 h 13



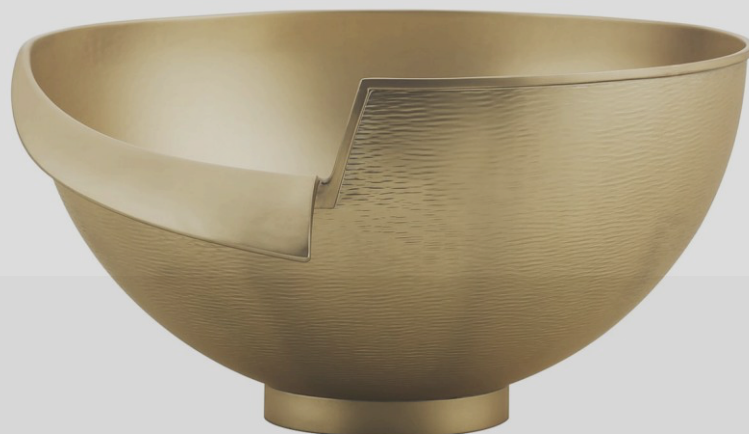


^ 7025 plate & centerpiece KITAKAMI  
white bronze, brass, copper - shiny, varnished  
texture Palline & Corteccia - dm 42m



- > bowl **ELIS**  
 Texture AGHI ORIZZONTALE - 64x20 h 10  
 design Enrico Z  
**9548** silver plated (varnished)  
**9548B** shiny brass (varnished)

- v < Bowl **INTUZIONI**  
 design Enrico&Bernardo Z  
 Texture AGHI - dm 30 h 14  
**9349** polished silver plated (varnished)  
**9349B** matt light gold (varnished)



- v Bowl **DELLABBONDANZA**  
 design Enrico Z - Texture AGHI - 53x19 h 8  
**9137** polished silver plated - **9137B** matt light gold (varnished)  
**9137S** satin silver (varnished)

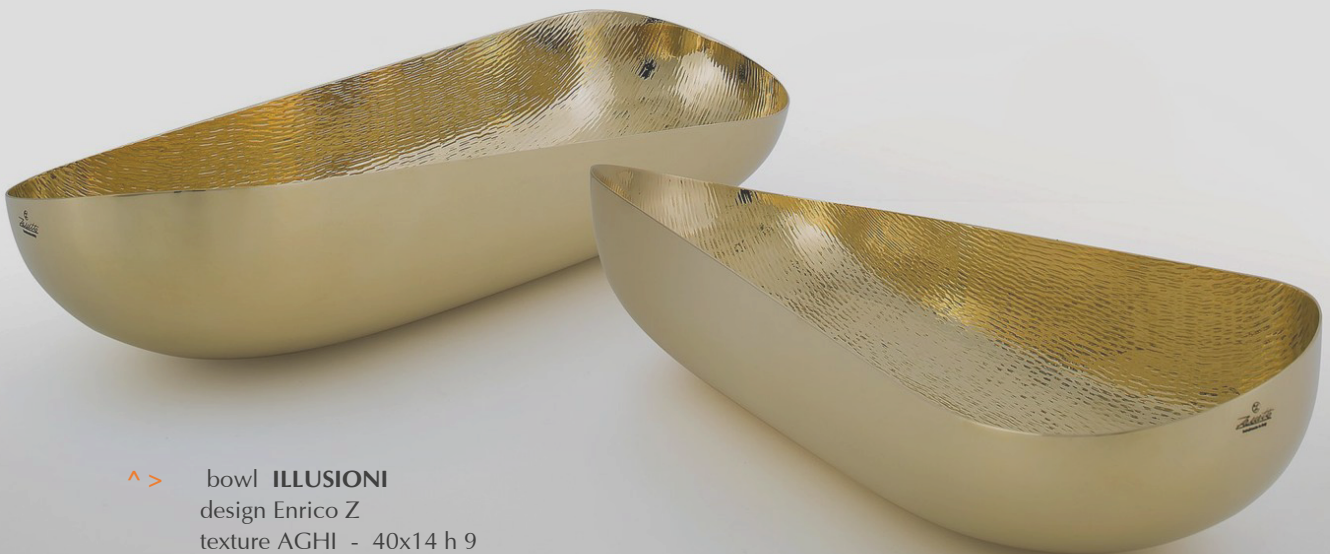




^ > **CANOA** - design Bernardo Z  
 texture *AGHI* - 42x10 h6 / 77x14 h8  
**9186 / 9188** silver plated  
**9186B / 9188B** brass (beeswax coating)

### *ILLUSIONI*(ILLUSIONS)

The warm materiality of the finely worked brass... the ripples as if a breath of wind were caressing the surface. The illusion is in creating that feeling of an already lived object, rooted in the memory of everyone. In *ILLUSIONS*, centrepiece cup, the simple and 'natural' shape is accompanied by textures that animate the surface, constantly giving it new life and identity, depending on the perspective of observation.



^ > bowl **ILLUSIONI**  
 design Enrico Z  
 texture *AGHI* - 40x14 h 9  
**9130** silver plated  
**9130B** bright brass (beeswax coating)



- ^ Bowl **TAMADA** - design Enrico&Bernardo Z  
 texture SPINADIPESCE - dm 34 h 9  
**9049** silver plated (varnished)  
**9049B** brass (beeswax coating)

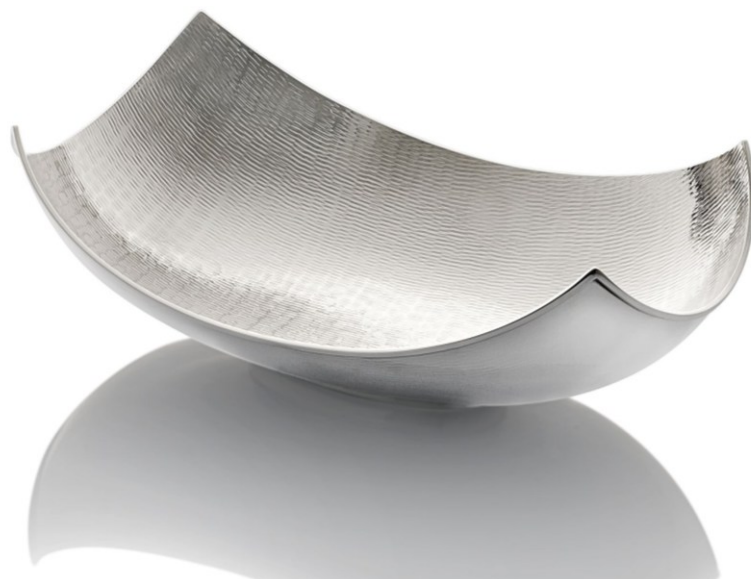


- > Bowl **ATMO SFERE** - design Enrico Z  
 texture *corteccia&fili* - dm 23 h 21  
**9198** silver plated/gilded inside  
**9198R** platinum plated/gilded inside



- < Bowl **LEAF** - design Enrico&Bernardo Z  
 texture CORTECCIA - 50x31 h 9  
**9736** silver plated (varnished)

- > Bowl **SUMATRA** - design Enrico&Bernardo Z  
 texture *aghi* - 38x24 h 13  
**9140** silver plated - **19140** sterling silver



### THE BURNISHING TECHNIQUE

A production method performed entirely by hand, it induces oxidation of the metal through the application of substances and heat to create unique decorative and colour effects. The object is then covered with a coat of beeswax, which provides lasting protection from alterations.



^ > **9052E** bowl 56  
Texture ROSANERO - Design ENRICO Z  
Copper - varnished - dm 24 h10



< v **7106-7107-7108** Bowl FILICUDI  
Bronze Noir - Texture TARTARUGA  
design Bernardo Z  
dm 9 h 5 - dm 11 h 6 - dm 13 h 7

### THE CHARM OF TIME

This Zanetto burnishing technique uses natural elements and the secret expertise of the craftsmen on the surface of the object in order to accelerate the signs of time. A deliberate choice to allow the metal to tell its own story, a unique evidence of the power of nature.





^ Oval bowl **NOCE** – design Enrico Z  
texture **FILI** - silver plated  
**9724** 12x9 – **9725** 18x13 – **9726** 24x17



^ Oval bowl **NOCE** - brass – design Enrico Z  
texture **FILI** – burnished out. (beeswax coating)  
**9724D** 12x9 – **9725D** 18x13 - **9726D** 24x17



^ bowl **OVO** – design Bernardo Z  
texture **CORTECCIA** - 19x14 h 8  
**9125** Silver plated - **19125** sterling silver



^ bowl **OVO** – design Bernardo Z  
texture **CORTECCIA** - 19x14 h 8  
**9125D** burnished brass



^ bowl **MAGNOLIA** – design Enrico Z  
texture **CORTECCIA** - 29x17 h 9  
**9127** silver pl. – **19127** sterling silver



^ bowl **CHIDERA** - design Enrico Z  
texture **CORTECCIA** - 39x25 h 12  
**9129** silver plated – **9129D** burnished brass  
**19129** sterling silver



^ 9132 bowl LIFE - design Enrico Z  
texture CORTECCIA - dm 26 h 12  
Silver plated



^ 9132D bowl LIFE - design Enrico Z  
texture FILI - dm 26 h 12  
Burnished brass



^ 9076 bowl VELA - design Enrico Z  
texture CORTECCIA - dm 22 h 15  
Silver plated



^ 9076D bowl VELA - design Enrico Z  
texture FILI - dm 22 h 15  
Burnished brass



^ bowl SATURNO - design Enrico Z  
texture AGHI - dm 14 h 8 / dm 21 h 11  
9346/9347 silver plated



^ bowl NIGER - design Bernardo Z  
texture CORTECCIA - dm 28 h 14  
9088 silver pl. - 9088D bur.brass



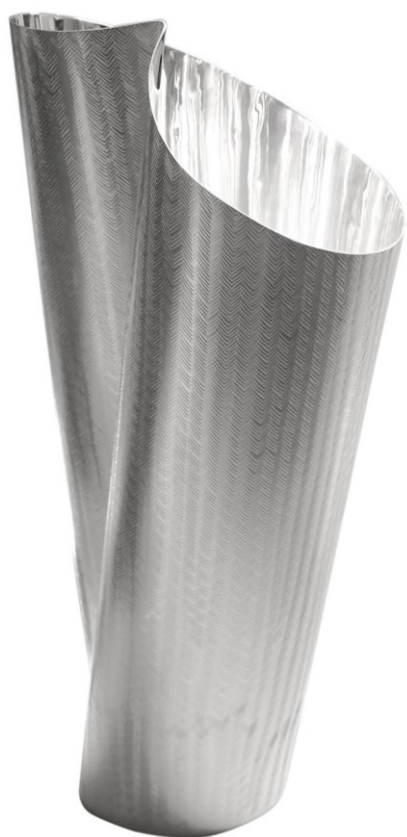
Vases



^ Bud vase **MEXICO** - design Enrico Z  
plus plated - texture Aghi  
9536 h 12 dm 6



^ vase **MEXICO** - design Enrico Z  
plus plated - texture Aghi  
9539 h 22 dm 15 / 9540 h 26 dm 15



- ^ vase **TAMADA** - design Bernardo Z  
texture *spinadipesce* - h 38  
**9050** silver plated (varnished)  
**9050B** light gold (varnished)

- > vase **EGREGORA** - design Enrico Z  
Texture *acqua* - h 20 dm 20 / h 30 dm 30  
**9639/9640** silver plated (varnished)  
**9639T/9640T** titanium plated (varnished)





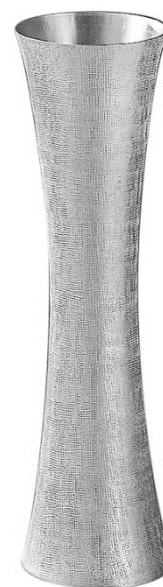
^ vase **VELA** - design Enrico Z  
Texture *corteccia* - h 38 dm 13  
**9074** silver plated



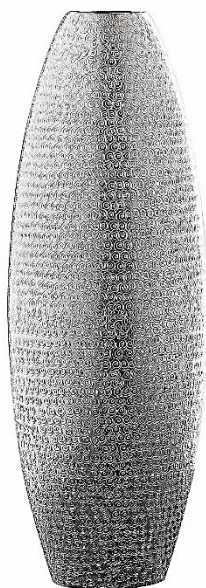
^ vase **LIFE** - design Enrico Z  
Texture *corteccia* - h 33 dm 13  
**9133** silver plated - **9133D** burnished brass



^ vase **ORPHEUS** - design Enrico Z  
Texture *canapa* - h 37 dm 16  
**9143** silver plated



^ vase **DUNE** - design Bernardo Z  
Texture *canapa* - h 30 dm 9 - h 36 dm 10  
**9028/9029** silver pl. - **9028B/9029B** satin brass



^ vase **MALINDI** - design Bernardo Z  
Texture *spirali* - h 38 dm 14  
9093 silver plated - 9093B light gold



^ vase **AGADIR** - design Bernardo Z  
Texture *spirali* - h 12 dm 20  
9024 silver plated



^ 7013 vase **EQUILIBRI**  
design Enrico Z - h 29 dm 16  
texture *aghi* - copper & brass (varnished)



^ 9743 Wall vase **PALLA**  
design Enrico Z - h 28 dm 15  
Texture *acqua* - Burnished copper (varnished)



< Vase **ROSANERO** - design E & B Z  
texture *Rosanero - varnished copper*  
9028E h 30 dm 8 - 9029E h 37 dm 10



^ > Vase **SNELLO** - design Enrico Z  
texture *Rosanero - varnished copper*  
9030E h 29 dm 21





Candelabras & Votives



< ^ 9678 Candelabra **CORALLO PICCOLO** - design Enrico Z  
 Texture aghi - light gold (varnished)  
 7 elements - base 17x20 - variable height



^ 9679 Candelabra **CORALLO GRANDE** - design Enrico Z  
 Texture aghi - light gold (varnished)  
 21 elements - base 40 x 20 - variable height



V candelabra **SOFFIO** - design Enrico Z  
 texture *aghi* - h 33 w. 33  
 9373 silver plated - 19373 sterling silver  
 9375 silver plated - 19375 sterling silver



^ 9178 candelabra 5 lights **SOSPIRI**  
 texture *Aghi* - h 26 35 x 9 silver plated (varnished)  
 design Enrico Z



## MADURAI FOUNTAIN

Candelabra

- < candelabra 9 lights **MADURAI FOUNTAIN** design  
 Enrico Z - texture AGHI, shiny - h. 57 dm 40  
**09677** silver plated  
**19677** sterling silver



- ^ > candelabra **MADURAI K** - design Enrico Z  
 6 lights - h 48 dm 33 - texture Aghi, shiny  
**09686** silver plated - varnished  
**19686** sterling silver - gr. 1.750



▲ **9659** candlestick **DISCLOSURE**  
design Enrico Z  
texture AGHI - h 50 dm 18  
silver plated (varnished)

A slender body, slim, almost aerial to the point of seeing the warm heart of fire soaring in the void. The two slender columns that support the flame differentiate themselves in a play of full and empty, of open and closed. In one the metal is folded in on itself creating a slender pipe, in the other the metal opens into a hemispheric section. Reflections, glints and lights chase each other in a magical sequence, dancing with the motion of the flame.



< v **7029W**  
candlestick AICHITO 2  
white bronze, brass,  
copper - shiny,  
varnished texture  
Palline - h 43 dm 10

< v **7029B**  
candlestick AICHITO 1  
brass, white bronze,  
copper - shiny,  
varnished texture  
Palline - h 43 dm 10

design Enrico Z





▲ Candlestick-vase **MADURAI** – design E Z  
 Text.Aghi - h 25 dm13/h 35 dm15/ h45 dm15  
**9647/9648/9649** silver plated (varnished)  
**19647/19648/19649** sterling silver  
**9647D/9648D/9649D** burnished brass



▲ Candlestick-vase **MADURAI NANO**  
 Design Enrico Z  
 texture *aghi* - h 13 dm 11  
**9646** silver plated - **9646D** burnished brass



## FIOCCO

Candlestick



^> candlestick **FIOCCO** - design Giulia Z  
texture AGHI, shiny - 11 x 9 h 4 - **09644** varnished silver plated



^ candlestick **LIGHT DIAMOND**  
design Enrico Z  
texture Buccia - h 9 7x5  
**6351C** copper - **6351T** titanium plated



^v **7026B** candles holder KIUSHU 1  
brass, white bronze, copper - matt & shiny, varnished - texture Cortecchia -  
h 12 dm 10  
^v **7026W** candles holder KIUSHU 2  
white bronze, brass, copper - matt & shiny, varnished - texture Palline - h  
12 dm 10  
design Enrico Z



^ votive **VELA** - design Enrico Z  
texture Fili - 11x9 h 5  
**9641** silver plated - **9641D** burnished brass



## Ambiance Perfumers

v **ambiance performer MARCELITO**  
 texture Canapa, shiny & matt - design Enrico Z  
 Titanium plated & gold plated - **09631T** h 11 dm 11



v **ambiance performer MARCELO**  
 design Enrico Z  
 texture Canapa - h 11 dm 11  
**9631** silver plated - **9631B** brass

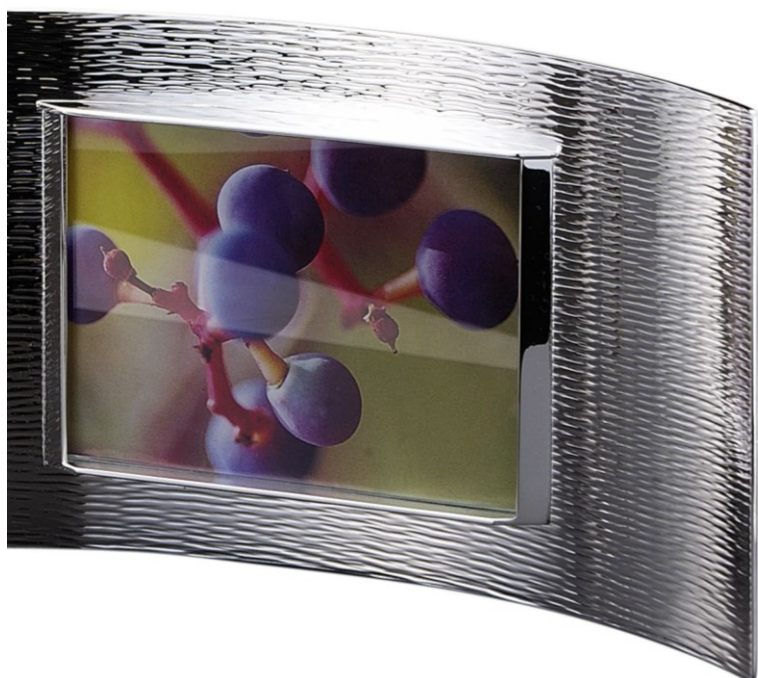


^ **ambiance performer CICIARITO**  
 design Enrico Z  
 texture Canapa - h 11 dm 10  
**9632** silver plated - **9632B** brass

^ **ambiance performer MANUELA**  
 design Enrico Z  
 texture Canapa - h 11 dm 11  
**9633** silver plated - **9633B** brass



> **incense burner BOMU**  
 design Enrico Z  
 texture Spinadipesce - l. 29  
**9007** silver plated - **9007B** brass



## Picture frames

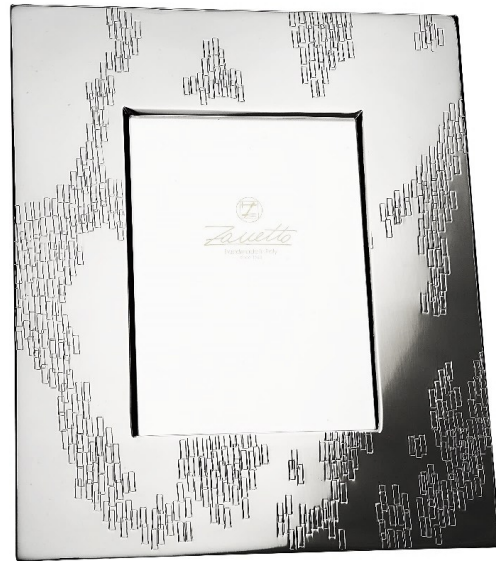


- ^ > Picture frame **UP 1 & UP 3** – design Enrico Z  
 Texture *acqua* - pic. 9x9 – 9x13 – 13x18  
**UP1 = 9706 – 9708 – 9709** shiny silver plated (varnished)  
**UP3 = 9706C – 9708C – 9709C** copper (varnished)  
 Zebrano wood - *sits both horizontally or vertically*



- ^ Picture frame **UP 2** - design Enrico Z  
 Texture *canapa* - pic. 9x9 – 9x13 – 13x18  
**9706S - 9708S - 9709S** matt silver plated (varnished)  
 Zebrano wood - *Sits both horizontally or vertically*

- > picture frame **NUVOLE**  
design Enrico Z  
pic. 9x9 – 9x13 – 13x18  
**9712-9713-9714** silver plated  
**9712B-9713B-9714B** matt brass

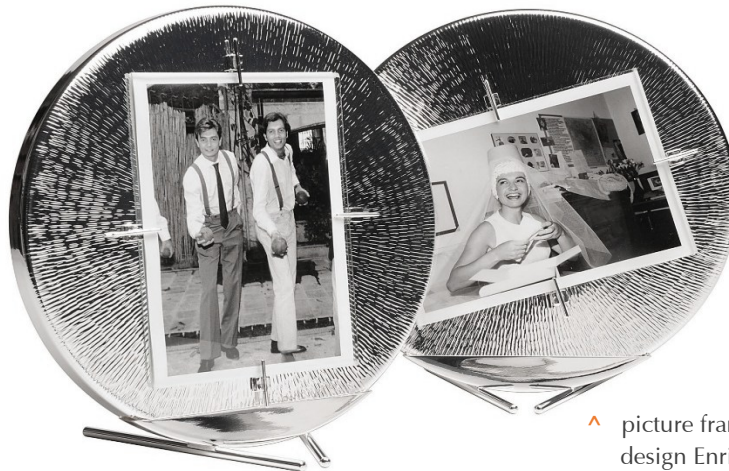


- < picture frame **INTRECCI**  
design Enrico Z  
pic. 9x9 – 9x13 – 13x18  
**9712A-9713A-9714A** silver plated  
**9712AB-9713AB-9714AB** matt brass

- > picture frame **VIE**  
design Enrico Z  
pic. 9x9 – 9x13 – 13x18  
**9716-9718-9719** silver plated



- > Picture frame **FRATES** - design Enrico Z  
 Texture *aghi* - Silver plated (varnished)  
**9306-9307-9309** - pic. 9x9 – 9x13 – 13x18



- ^ picture frame **STELLA**  
 design Enrico Z  
 texture *aghi raggiera* – silver plated (varnished)  
**9750** - dm 26 - pic. 13x18

- > picture frame **R&B**  
 design Enrico Z  
 texture *aghi* - 33x10 h15  
 pic. 13x18  
**9109** silver plated (varnished)





Desk



^ 9255 square plate **OBLIO**  
design Enrico Z - silver plated  
Tex. Rettangoli&Sahara - 181x18



> 9173 tray **PASSIONI** - design B&E Z  
texture aghi - plus pl. - 21x13



^ 9175 pencil stand **PASSIONI**  
design B&E Z  
texture aghi - plus pl. - h10 9x6



^ > paper knife **MACHOMAN**  
design Enrico Z - texture Aghi - l. 27 dm 2  
06330D burn. brass - 06330T silver pl. & titanium pl.



^ > magnifying glass **MACHOMAN**  
design Enrico Z - texture Aghi - l. 20 dm 2  
06332D burn. brass - 06332T silver pl. & titanium pl.



^ 9174 ash-tray **PASSIONI** - design B&E Z  
texture Aghi - plus plated - dm 15 h 4



^ 9174-2T ash-tray **MINIPASSIONI** - design B&E Z  
texture Aghi - titanium plated - dm 11 h 3



## FUN

Ash-tray



- ^ < rectangular ash-tray **FUN**  
 design Enrico Z – 17 X 11 h 4  
 9574 texture AGHI, shiny plus plated  
 9574D texture PALLINE, matt burnished brass  
 9574F texture INTRECCI matt bronze noir

# Boxes & Vide-poche





^ secrets box **DROP** - design Enrico Z  
texture Aghi, shiny - 16x10 h 11  
**06301** silver plated, gilded inside  
**16301** Sterling silver, gilded inside

v secrets box **BIPOP** - design Enrico Z  
texture Aghi, shiny - 16x10 h 10  
**06302** silver plated, gilded inside  
**16302** Sterling silver, gilded inside – gr 760



< ^ box **PIANETA DELLE SORPRESE** - design Enrico Z  
texture CANAPA – h 21 - varnished  
**9610** silver plated - **9610G** gold plated



^ **SMALL PORCINO** - design Enrico Z - burnished brass - dm 8 h 9  
**9003-I** texture AGHI - **9003-II** texture PALLINE



^ **BIG PORCINO** - design Enrico Z - burnished brass - dm 8 h 11  
**9004-I** texture AGHI - **9004-II** texture PALLINE

# FIRENZE

collection

ROUND AND RECTANGULAR VIDE POCHE  
Choose between our precious materials: brass, burnished bronze, copper and silver. Then choose from 4 colored removable internal pad to make the perfect match.



^ 9674F round vide poche FIRENZE - design Enrico&Giulia Z  
bronze noir - matt - texture Tartaruga - dm 18 h 3



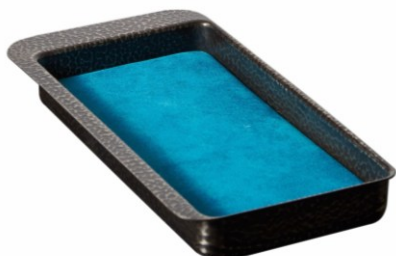
^ 9674C round vide poche FIRENZE - design Enrico&Giulia Z  
copper - matt , varnished - texture Acqua - dm 18 h 3



^ 9674A round vide poche FIRENZE - design Enrico&Giulia Z  
silver plated - shiny, varnished - texture Aghi - dm 18 h 3



^ 9674B round vide poche FIRENZE - design Enrico&Giulia Z  
Brass - matt, varnished - texture Cortecchia - dm 18 h 3



^ 9675F rect. vide poche FIRENZE - design Enrico&Giulia Z  
bronze noir - matt - texture Tartaruga - 24x12 h 3



^ 9675A rect.vide poche FIRENZE - design Enrico&Giulia Z  
Silver pl. - shiny, varnished - texture Acqua - 24x12 h 3



^ 9675C rect.vide poche FIRENZE - design Enrico&Giulia Z  
copper - shiny, varnished - texture Aghi - 24x12 h 3

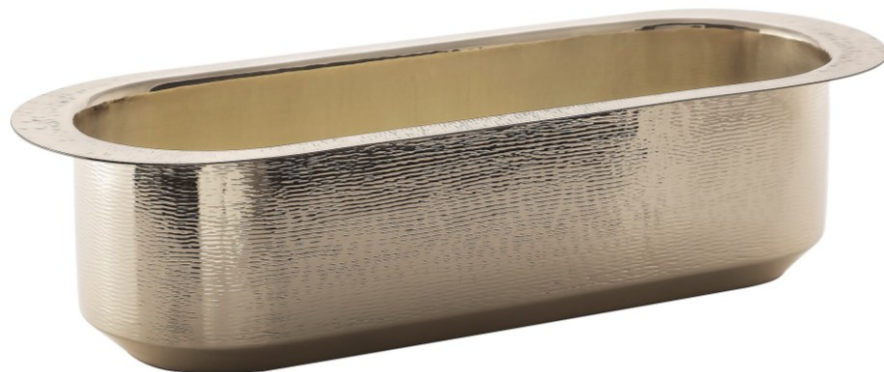


^ 9675B rect. vide poche FIRENZE - design Enrico&Giulia Z  
Brass - matt, varnished - texture Cortecchia - 24x12 h 3

INNER PAD : cream 8 - light blue 5 - dark blue 2 - pink 10

Home Garden





^ **DAVANZALE** windowsill cachepot  
design Enrico Z  
texture AGHI - 46x18 h12  
**9020** shiny brass (varnished)



^ **COCCIO** cachepot  
design Enrico Z  
texture AGHI - dm 14 h12  
**9014** shiny brass (varnished)



> **CICCIO** watering can  
design Enrico Z  
texture AGHI - dm 14 h16  
**9012** shiny brass

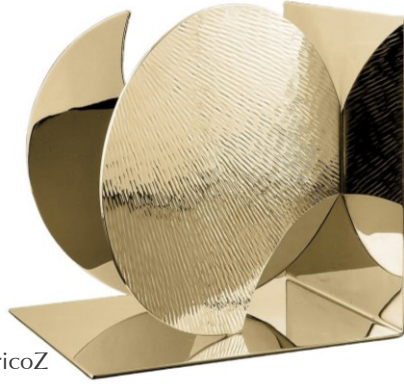




Accessories



- > bookend **TRIP** - design Enrico Z  
texture AGHI - 16x16x16  
**5040** plus plated (no tarnish)  
**5040B** brass (varnished)



- > **5101** Mirror **EXAGONO**  
design Enrico Z  
47x30 h 4 - varnished silver plated



- > kleenex box **DINO** - design E&B Z  
texture AGHI - 24x13 h 8  
**9179** matt silver pl. - **9179P** plus pl.
- > kleenex box **SIMPLICIO** - design E&B Z  
without metal bottom  
**9169** silver pl. - **9169B** light gold



- ^ umbrella stand **DOMO**  
design EZ - 25x25 h60  
**5020** plus pl.  
**5020B** varnished brass



- ^ big bowl-magazine holder **DOMO** - design BZ  
texture *tartaruga* - 46x29 h15  
**7102** bronze noir (varnished)



- ^ big vase/umbrella stand **TAMADA**  
design BZ - Texture SPINADIPESCE - h66 dm25  
**9051** varnished silver plated - **9051B** varnished brass

Zanetto is exploring a new design horizon. The art of forging and the craftsmanship of metals, in which it has absolute mastery, and becomes the fil rouge through which to design the everyday furnishing elements: tables, chairs, bookcases, lamps. An elegant and contemporary creativity prevails, a play on geometries, symmetries and balances between fullness and emptiness.

**New design horizon**

**LIVING  
EXTRA**





## TAPPO

When irony is combined with usefulness and plays with reflections. A small table - but also a stool - is proposed in the form of a sparkling wine cork. It is reminiscent of the experimentation of Pop Art and Italian Design of the 1960s.

Tappo represent the playful part of all of us while not neglecting usefulness, therefore so many possibilities in an object. Creativity in design and skilled craftsmanship on the surface of each one, the ability to combine different finishes without the fear of adding a non-metal such as velvet.

### pouf, small table, box TAPPO

design NOII - dm 35 h 45

5230 A shiny silver plated

5230 B shiny brass

5230 C shiny copper  
Varnished





stool TAPPO  
design NOII - dm 38 h 81  
5232 A shiny silver plated  
5232 B shiny brass  
5232 C shiny copper  
varnished

**armchair DREAM**  
design NOII – 76x70 h 70  
5240B shiny brass  
5240C shiny copper  
varnished





## BOOKCASE

### U

it is with U that we have tried to communicate the versatility and the infinite possibilities that Zanetto can offer by working the metal. Planes combined with structures that contain books, objects and an infinity of other items. Perfectly adaptable to modern and luxurious contexts. Each shelf has a different handmade "beating", the distinctive sign of actual and pulsating craftsmanship



**Bookcase U**  
 design NO11  
 110x110x30  
 5270A silver plated  
 5270C copper





## INFINITO

A unique 'creative' thread that links usefulness to beauty. But that, above all, focuses on the continuous pursuit of harmony.

> **table INFINITO** – design NOOII  
**5201B** shiny brass, glass dm 120 h 72  
**5202S** satin silver, glass dm 140 h 72



< **Console MADURAI**  
 Design Enrico Z & NOOII  
 Shiny copper, glass  
**5203** - 150 x 63 h 75



^ Side table with tray MADURAI

Design Enrico Z - dm 50 h 70

5206 - Silver, copper and mirror - texture Aghi

## DUO

allows us to think about these coffee tables as "not lazy" ... because the planes rise from the base becoming independent trays. Round in shape, are they tables or trays.

Both. They combine two functions: serving and being a support for everyday objects.... a glass, a pen, a book. The beauty lies in the simplicity of the idea, and in the precious shine and metal working of the surfaces.



^ Side table DUO – design NOOII

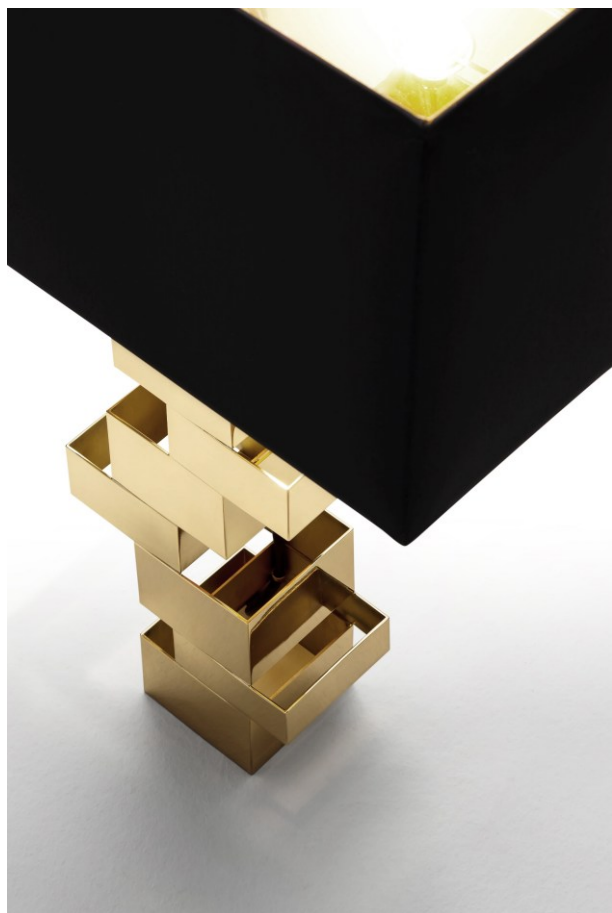
tall: dm 35 h 50 - 5210B brass - 5210C copper - 5210S silver plated  
low: dm 50 h 40 - 5211B brass - 5211C copper - 5211S silver plated  
varnished



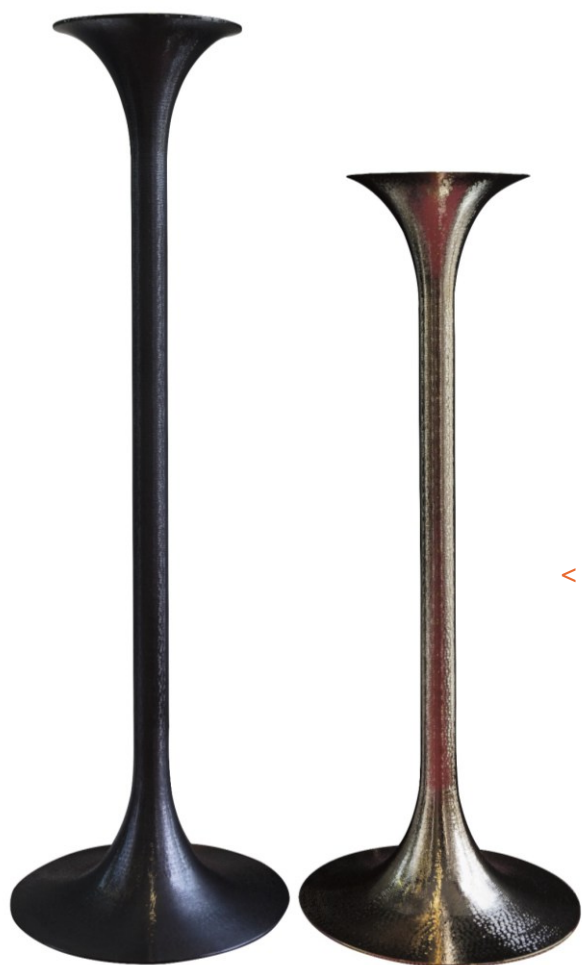
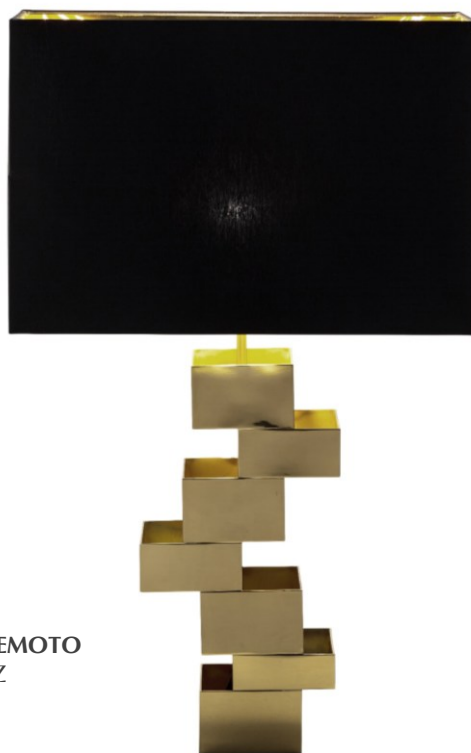


**hanging lamp CUCITI**  
design NOII  
Small: h 13 dm 14  
5427C copper  
5427W white bronze  
Big: h 26 dm 21  
5428C copper  
5428W white bronze





< > **Table lamp TERREMOTO**  
design Enrico Z  
h 65 40 x 25  
5404 brass



< **giant vase / candleholder /  
stand MADURAI**  
design ENRICO Z  
low: dm 39 h 102  
5048B brass  
5048T titanium plated  
tall: dm 39 h 124  
5049B brass  
5049T titanium plated

v **plian ICS**  
design Enrico Z - 42x35 h 63  
5010 plus plated  
5010B shiny brass





## Jewels & Gifts

Giving must involve “making time”, cultivating the pleasure of looking for something special and unique. It means taking care of our soul and it is an exercise of sensitivity that drives us to perceive from the glances, the words and the expressions of others the silent desire for beauty.

The context of the gift is important and whether it is intended to embellish a house, a table or a person.

There are those who love Art and those who love objects that give personality and style to conviviality and good living.

The inevitable choice is towards productions that are characterised by mastery, executive quality, preciousness of materials and creative uniqueness. In a word... Zanetto.



## JEWELS

new way:  
to bring new Beauty on the bodies.  
The Beauty as performed by Zanetto,  
with its vibrating lights,  
its unusual curves,  
its language of textures.  
To catch the light, breaking up  
and returning it multiplied.  
The magic of making  
with skilled hands:  
unique and unmatched.  
Like each human being.



Ask our offices for the  
catalogue

GIFTS



- > **PICCOLOUOMO** vase  
h 24 dm 6  
texture MIX - varnished  
**9900A** silver plated  
**9900C** copper  
**9900T** titanium plated  
Design Enrico & Paolo Z



- > **PICCOLOUOMO CONCAPPELLO**  
vase & candlestick - h 25 dm 6  
texture MIX - varnished  
**9901A** silver plated  
**9901C** copper  
**9901T** titanium plated  
Design Enrico & Paolo Z



**PICCOLOUOMO**

If it is true that man is made of the same material as the stars ... it is not difficult to understand which is the fantastic story enclosed in the "Piccolo Uomo" collection, designed by Enrico Zanetto and created by his son Paolo, the third generation who joined the company. A series of vases and chandeliers of iridescent beauty, where metal becomes a mirror of refractions and flashes in space. Light that is the signal of the universe, which reaches and communicates to us as far as billions of years, distances impossible to imagine but not for this less real. Little Men of Light. Stars where emotions are drawn on the surface. With subtle, subtle spelling, which gives us the earthly dimension of existences made up of needs and sensations. Everyday life can and must consist of fragments that unite infinity to time. The beauty of the soul of the beholder



- ^ < **6370** spinning top **FELICITA'**  
design Enrico Z - dm 8 h 8  
texture BUCCIA - plus plated



^ > paper knife **MACHOMAN**  
design Enrico Z - texture Aghi - l. 27 dm 2  
**06330D** burn. brass - **06330T** silver pl. & titanium pl.



^ < magnifying glass **MACHOMAN**  
design Enrico Z - texture Aghi - l. 20 dm 2  
**06332D** burn. brass - **06332T** silver pl. & titanium pl.



< ^ visit cards holder **DROP** - design Enrico Z  
t. PALLINE, CORTECCIA, SPIRALI - 9x6x1  
**6310** platinum plated  
**6310S** satin silver plated (varnished)



< ^ liquor flask **CICHETTO**  
Design Enrico Z  
texture Aghi, shiny - 13x6,5x3.5 ml 200  
**00063** silver plated - **01063** sterling silver gr. 200



^ 9260 **DUO BARMAN** shaker & mixer  
Design Enrico Z - h 23 / h 29  
texture CRTECCIA & AGHI  
gold plated



v ^ 6322 stopper **BOTTO**  
design Enrico Z - h 6 dm 4  
texture Buccia, shiny - silver plated



^ v 6320 stopper **SALVAFRIZZ**  
design Enrico Z - 11 x 3  
texture BUCCIA - platinum plated





^ 9617 tumbler **MEMORIA** - design Enrico Z  
texture AGHI VERTICALE & ORIZZONTALE  
silver plated - dm 8 h 10  
5 words engraved



**TUMBLER MEMORIA** Water is the key resource for all forms of life on our planet, its quality and integrity are essential to their survival. Silver has many virtues, among which stand out the antimicrobial properties: it has the capability to destroy infections caused by microorganisms as bacteria, viruses, algae and fungi. Hippocrates, the father of modern medicine, wrote that silver had beneficial healing and prevention of disease; the Phoenicians used to put water and wine into silver bottles to prevent contamination. Silver, therefore, cleans and revitalizes the water.

**Masaru Emoto**, Japanese scientist (1943-2014), after extensive studies, research and experiments, discovered that the water possess a Memory and changes the structure of its crystals depending on the words and thoughts that receives: a sort of magnetic tape capable to record in very sensitive way the energy information that it receives from the environment.

The water treated with positive words forms harmonious crystals, hundreds of photographs show them and has been demonstrated that the water so transformed possess therapeutic and curative effects for our health. We have therefore been willing

**to engrave the inside of tumbler** with the beautiful words:  
**thank you love peace sharing union**

The new tumbler, thus combines the good properties of silver together with those of positive thoughts, revitalizes and transmutes the skills of water, leading, to the simple act of drinking, a new therapeutic capacity and new awareness.



- ^ baby cup **CAPRI** - design Enrico Z  
 texture ACQUA - dm 6,5 h 7  
 9416-2 s silver plated & cold enamels  
 light blue - pink - grey



- ^ egg cup **BIBO** - design Enrico Z  
 texture PALLINE - dm 5 h 5 - l. 7  
 silver plated & copper  
 9101 egg cup  
 9101-2 egg cup with spoon

**CAPRI babycup** Beauty in education is important. It teaches respect and love for harmony. Fundamental qualities to address the great commitment that every young person is faced with. So why not think of them also, of their ability to perceive colours and shapes? These are the CAPRI glasses in rhodium plated metal and ACQUA texture designed for the hands of children. Not only to drink but also to play with the reflections of silver, to look at themselves and to feel the fine and pleasant surface beneath their fingers. Finally the colours, in delicate and refined shades: pink, blue and grey.



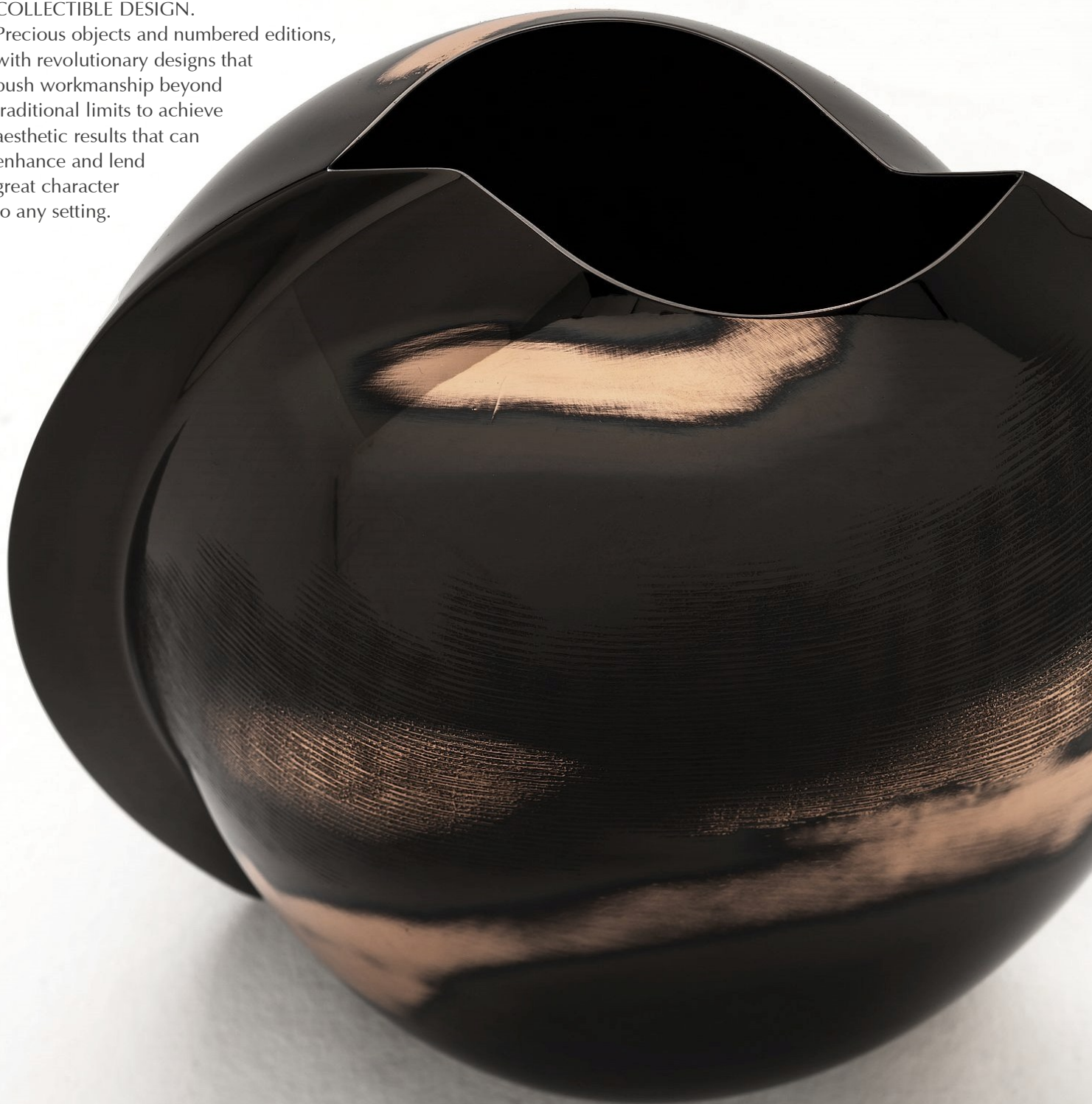


When creativity challenges a material's limits, the most astonishing creations arise.

Novel interpretations of the most noble metals, unusual and innovative endeavors, these are the COLLECTIBLE DESIGN.

Precious objects and numbered editions, with revolutionary designs that push workmanship beyond traditional limits to achieve aesthetic results that can enhance and lend great character to any setting.

## COLLECTIBLE DESIGN



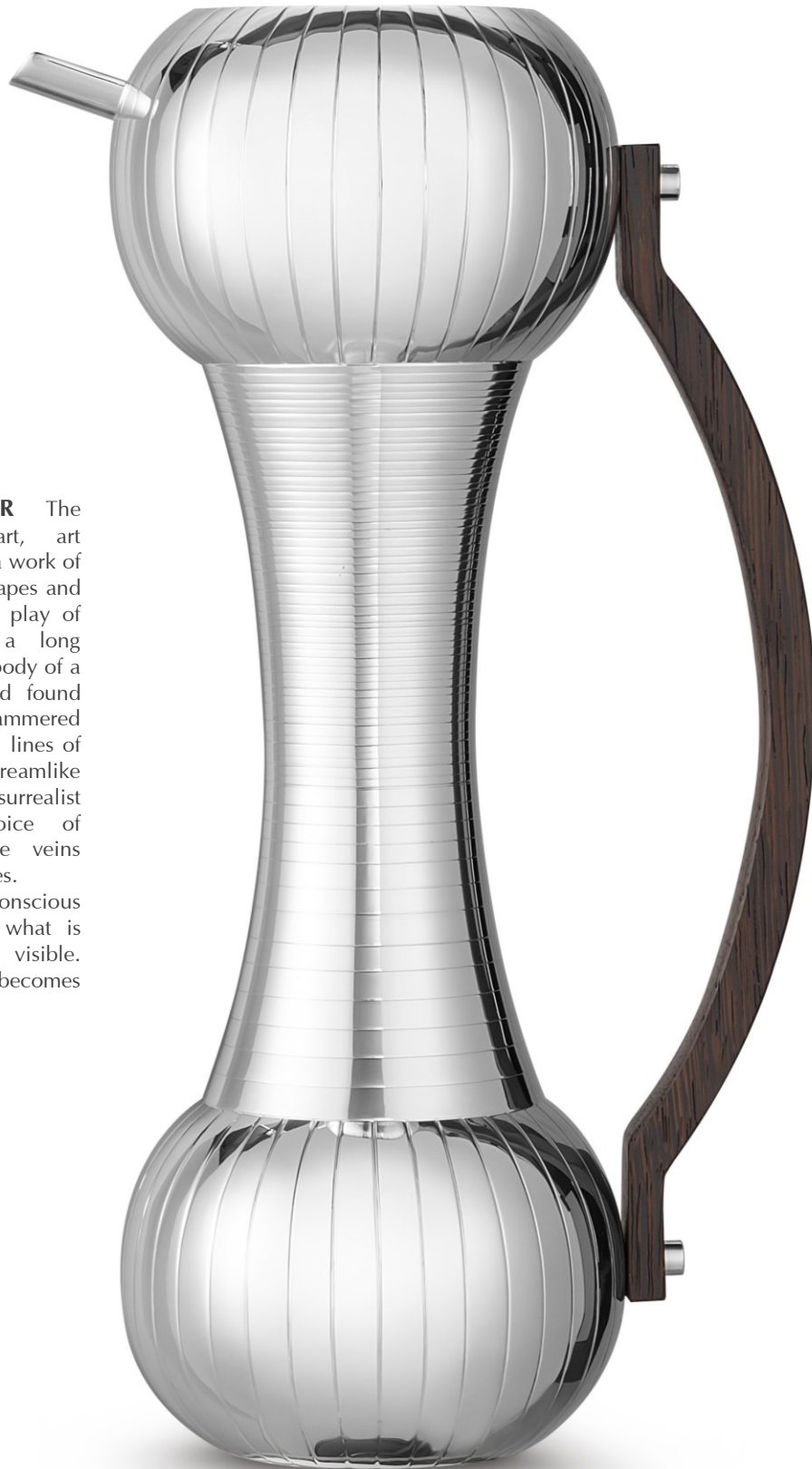


**FLOREM** Inspired by blossoming flowers, a reference to nature and its beauty. The dynamic lines, the energy of their movement and the duality given by the surface treatment reveal an unique character of the vase, ideated by Riccardo Erata. The complexity given by exception, the movement imprinted by the folding and bending surfaces are expressing the power of flowering. A precise condition representing the re-birth of life, marking the innate need of growth. This celebratory work releases its energy thanks to its unique form, its sparkling and textured surfaces expertly shaped by Zanetto artisans.



^ > **7035 vase FLOREM**  
 design Riccardo Erata  
**numbered work**  
 Texture Fili - h 44 dm 40  
 brass & burnished brass

**CACATOO PITCHER** The pitcher becomes art, art becomes abstract. In a work of technical difficulty, shapes and lines create a unique play of volumes. A beak, a long tapered crest and the body of a cockatoo are lost and found along the high-hammered horizontal and vertical lines of this piece. Dreamlike combinations and surrealist references, the choice of wenge wood, whose veins evoke exotic landscapes. A journey of the unconscious that gives access to what is beyond the visible. Functionality becomes surreality.



^ pitcher CACATOO  
 design Enrico Z - numbered work -  
 hand engraving, shiny - h 40 dm 16 (24)  
 7017 Silver plated - 7017G gold plated



^ vase LUMACA  
 design Enrico Z - **numbered work**  
 shiny - h 43 29 x 24  
 7033 Texture Vie, gold plated  
 7033W white bronze and copper

**LUMACA VASE** The Lumaca vase is a reference to Futurism. A meeting of concepts that intersect in one: dynamism. A play of shapes and lights, the warm reflections of gold mirror the surroundings but maintain their primary identity thanks to the 'vie' hammering that traces the primordial design, outlining the concept around which this vase was conceived. The freedom to experiment with shapes, volumes, with the experience of the craftsmen who created this work; this freedom reflects the creative research of Enrico Zanetto. A continuous journey, an evolution that never loses its essence: shaping the material and giving it new life.



### RHODOS AMPHORA VASE

An ode to classical beauty, a reference to ancient Greece. The proud and clean lines, a symptom of grace, measure and proportion, meet the contemporary taste of the author, Enrico Zanetto. The harmony of timeless beauty is pursued on the levels of balance and symmetry, between all the parts and between each of them the whole figure, to then be softened by angular and moderate handles. The amphora, symbol of the body that houses the soul and grace, is the guardian of the essence of life and the synthesis of everything that exists in every cycle of life and its transformations. This celebratory work releases the multiplicity of its meanings, radiating with light thanks to its sparkling and precious gold-coloured surfaces expertly shaped by Zanetto artisans.



▲ vase amphora RHODOS  
 design Enrico Z - numbered work  
 Texture Buccia, hand engraving, shiny  
 h 47 dm 15 (l.27)  
 7032 Silver plated and titanium plated  
 7032B light gold and titanium plated 42

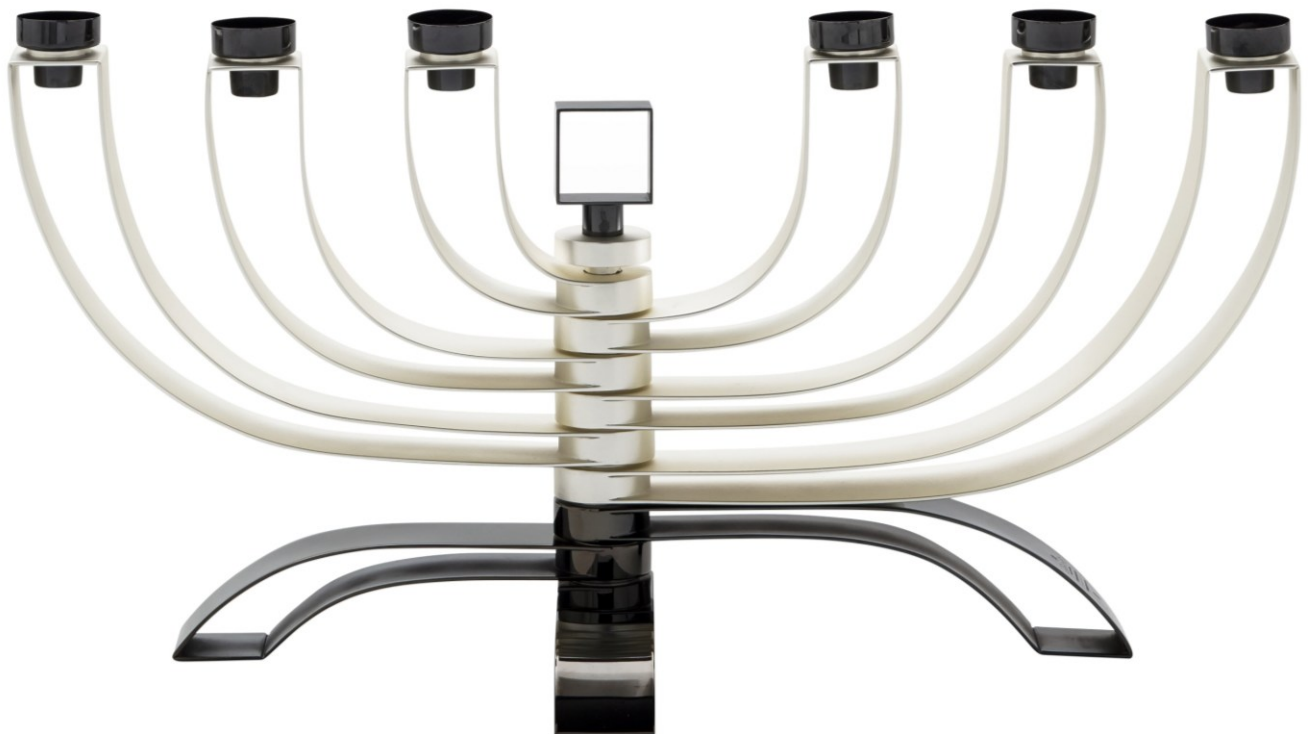




▲ **CONVERTENDO** Vase - Design Enrico Z  
 texture CORTECCIA – shiny – varnished - h 30 26x16  
**7018 A** silver and brass - **7018 T** titanium and copper  
 numbered work

**CONVERTENDO** Curves and roundness chase each other, in a game that does not seem to end, relaunched by the specularity of the volumes and punctuated by acute angles that soften into new eye-capturing roundness, in the search for a solution, for a response between the obverse and the verse. And so the shape draws a plant that perhaps is a dove, or perhaps a wriggling fish. The surface ripples thanks to the Corteccia texture, which traces an upward movement and bends vortices, referring from one face to another and giving further dynamism to this form, which would have remained blissfully placid in its feminine essence. And another movement vibrates the surface, thanks to vigorous brushstrokes that thicken new colors and new chromatic originality. Fierce brushstrokes to make each piece totally unique. Between Futurism and Emilio Vedova.

**ATLANTIDE** It is the nobility of metal, in its chromatic variations and its ability to be "written", to make the light on its surface run. Creating unexpected games, giving amazement. And even more, if it becomes the support of one or several flames that move in space and that are reflected in the glitter – which is never the same for the eye - of the ray that strikes and rebounds. This is how the Atlantis candlestick, designed by Enrico Zanetto, encloses in its geometric dynamism, the very essence of the physics of light. Of its magic. The elegance that is the result of a maniacal search for equilibrium is different every time. The movement of the "arms" can draw imaginary outlines in space and create living, symbolic sculptures, equipped with a hidden soul. Which is called beauty.



^ **ATLANTIDE** candelabra  
 Design Enrico Z  
 shiny & matt – varnished - h 26 l.53  
**7020** silver and titanium plated  
**numbered work**





▲ candelabra 845  
Smooth & shiny  
8 lights - h 31 dm 27  
design Enrico Z  
**numbered work**  
9607 silver plated



**Bowl ETERICA** In a game of empty and full, the perfection of the sphere plays with the symbol of the metaphysical pear, reflected reversed, as in a darkroom.

An object that holds and expresses special skills in the juggle hammers, fire, and metal oxides.

Here we go bringing new Beauty and new meanings.....



^ **ETERICA** bowl - Design Enrico Z  
texture TARTARUGA - varnished - dm 29 h 19  
**7012** - copper  
**numbered work**

**SEGRETI SVELATI** A decidedly unusual artefact, that defies definition. It can be used as a centerpiece, fruit bowl, and for a host of other purposes. This stems from an age-old process of our workshop, used in the Sixties. It is produced in white bronze, with a polished interior, while the exterior undergoes a special burnishing and oxidation process, to obtain stunning colours of ivory black, burnt earth and platinum grey. The volume is roughened with a hammered finish. The border that underlines and reinforces the contours of the object is applied by hand and then flame welded. Work of superior quality.

The upper section, which partially conceals the content from view, seems to be the remains of a gash, created from an irresistible need to reveal the secret contents of this strange object.

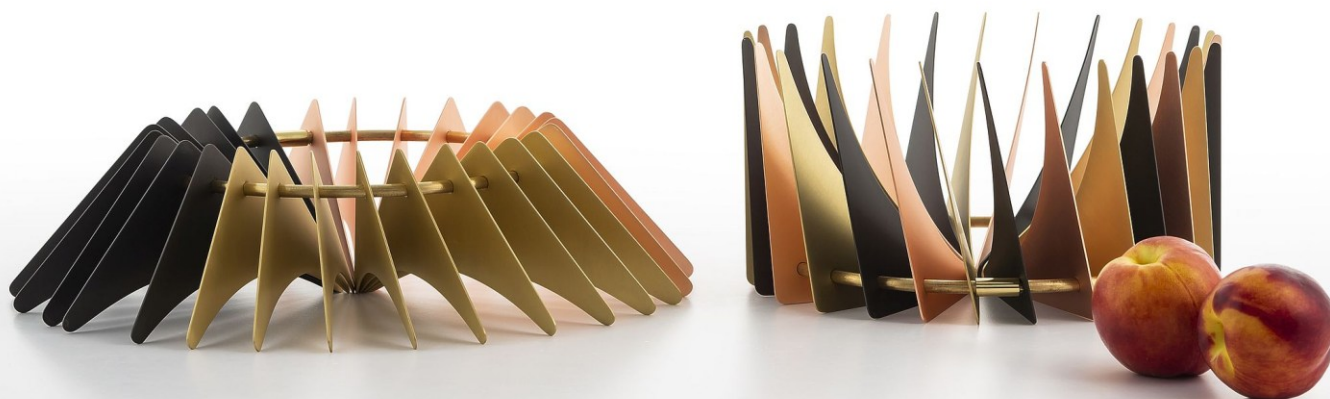
But there is also an esoteric meaning behind it: the cut on the upper section is a clear reminder of the well known symbol in ancient Chinese philosophy that represents the opposites, the intrinsic duality in the material world: in this case presence-absence. Only a personal search leads to an understanding of the absolute and perception of the unit, here represented by the lower integral section.



^ **SEGRETI SVELATI** bowl - Design Enrico Z  
 texture TARTARUGA – varnished - dm 42 h 17  
 7101 - bronze noir  
 numbered work

**DOMINO** A simple ring and a sequence of extended 'sails', thanks to the rigidity of the metal from which it is made. Gold, bronze, titanium, copper reflections.... a chromatic sequence creating luminous, amazing and precious plays.

DOMINO is a very simple yet versatile, mobile and elegant centrepiece where the elements composing the structure are dynamic and can assume different positions. The image it evokes is that of an audacious, organic and vibrating architecture. The reference is almost immediate: the Cathedral of Brasilia by Oscar Niemeyer, one of the greatest and undisputed masters of XX century architecture. The reference is combined with another concept. The construction of 'beauty' defines the space of awareness, of the intrinsic value of matter and of the need not to waste it. In DOMINO - as in all the Zanetto productions, the theme of 'waste' assumes its own value; it invokes reflections on the preciousness of the fragment that continues to invite precious glints. In fact, the elements composing the centrepiece are the creative re-elaboration of "remnants" of other workings and it is in the ideational process of Enrico Zanetto that they are transformed into an alphabet of a new unique and unrepeatable object. Sustainability, therefore, is not only an imperative linked to the respect of our planet, but is also and above all, art!

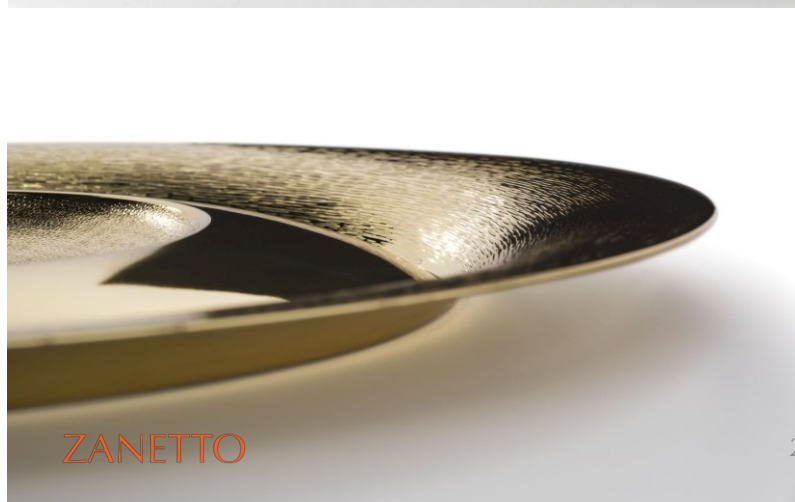


▲ **DOMINO** Centerpiece - Design Enrico Z  
satin Brass, copper, black titanium plated (varnished)  
7010 - dm 27 h14 - dm 39 h10  
numbered work



**PANTELLERIA** A large plate that illuminates the space around it. As if it were the sun colouring one of the most beautiful islands in the Mediterranean Sea. A golden surface that shines, vibrates and reproduces the effect of heat in contact with the Earth. The spectacular workmanship alternates different textures - needles, small balls, mirror - allowing you to concentrate in a single object the 'memory' of our emotions. In the silver version (silver plated), the lunar symbol is reflected in the ripples of the sea, in the magic of the night, in the sand that flows between the fingers and the silence broken by the surf. Pure beauty.

- ▼ **PANTELLERIA** round giant plate - Design Enrico Z  
texture PALLINE e AGHI - dm 61 h 3  
5080 Silver plated - 5080G gold plated  
numbered work





^ **ELIS** vase

Design Enrico Z - **numbered work**  
smooth&shiny - 60x15 h 20

9543 Silver pl. - 9543B brass - 9543C copper -



^ **CANOA GIGANTE** centerpiece

Design Bernardo Z - **numbered work**  
texture AGHI - 100x18 h 13

9189 Silver plated - 19189 sterling silver



**NACO Vase** Is an incredible artisan work.

The shape is obtained completely with hammer-work without the aid of machines or moulds:

hours and hours of muscular working and different types of annealing to tame the metal.

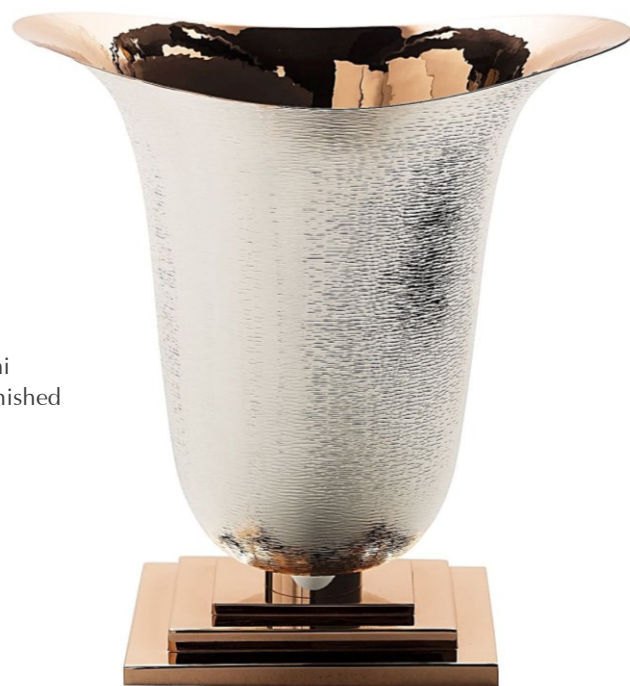
The NACO vase is now an icon of Zanetto.



- < **NACO vase**  
 Design Bernardo&Enrico Z  
 texture AGHI – h 50 21x13  
**9183** silver plated  
**9183G** gold plated  
**19183** sterling silver  
**numbered work**



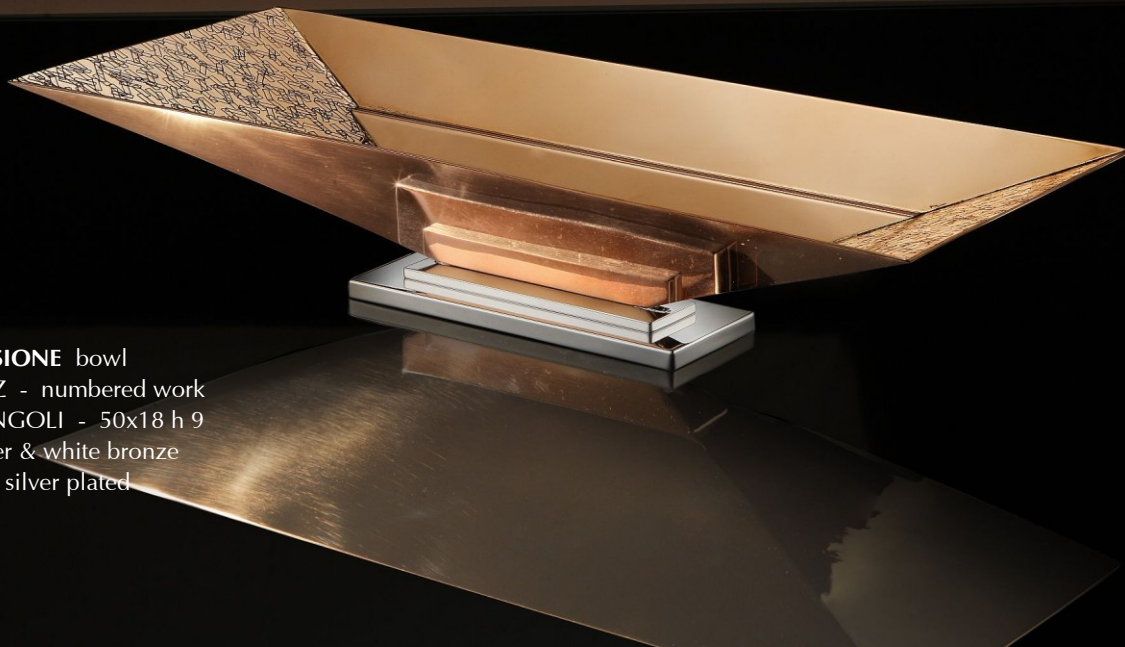
< **NEWROME** vase - Design Enrico Z  
texture AGHI - 32x11 h 25  
**9740** Silver plated - **9740B** brass  
numbered work



> **TRE** vase - Design Denise Viviani  
texture AGHI - h 33 31x23 - varnished  
**9745** Silver plated & copper  
numbered work



< **ATMA** candlestick - Design Enrico Z  
smooth - 9x9 h 10  
**9606** shiny silver plated - **9606B** matt - light gold  
numbered work



^ **ESPANSIONE** bowl  
Design Enrico Z - numbered work  
texture RETTANGOLI - 50x18 h 9  
7001 copper & white bronze  
7001 A silver plated

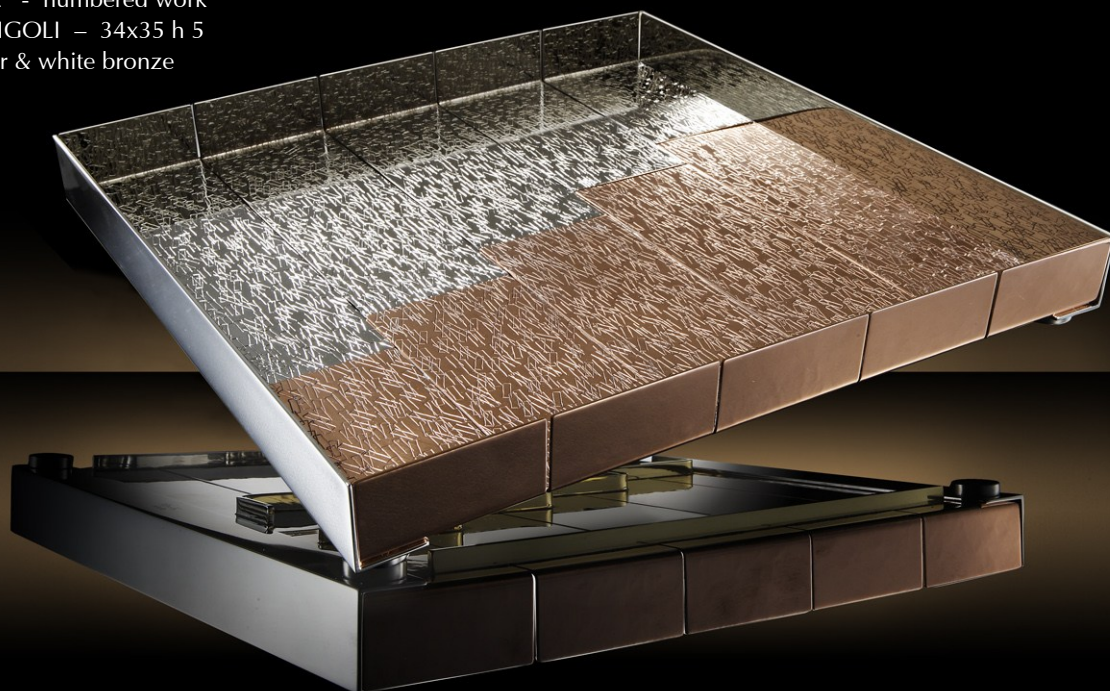
v **DUEUNO** bowl - Design Enrico Z  
text. RETTANGOLI & CANAPA dm 31 h 6  
7005 copper & white bronze  
numbered work





< **ESSENZA** vase - Design Enrico Z  
texture AGHI - h 34 dm 25 -  
varnished  
**7003** copper & white bronze  
numbered work

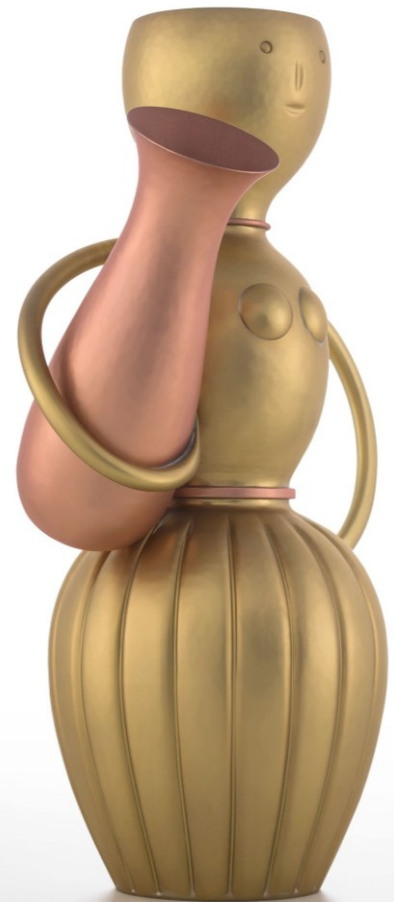
> **ACCORDI** tray  
Design Enrico Z - numbered work  
texture RETTANGOLI - 34x35 h 5  
**7007** copper & white bronze





^ **LA FEMME** sculpture  
artwork by Enrico Z  
gilt metal – silver plated  
copper – enamel  
oil painting  
29x29x45 - **50.001**  
limited edition 12 pcs

v **PABLITA** sculpture  
(hommage a Pablo Picasso)  
artwork by Enrico Z  
brass & copper  
**50.003** - h 33 25x10  
limited edition 12 pcs



> **AL NOCCIOLIO** sculpture  
artwork by Enrico Z  
gilt metal – silver plated  
29x18x7 - **50.002**  
limited edition 9 pcs





^ **6 MILLIONS DROPS AWAKE**  
 wall sculpture - artwork by Enrico Z  
 silver plated metal – wood - 100x90x6 - **50.501**  
**limited edition 12 pcs**



^ **ENERGIA 1**  
 wall sculpture - artwork by Enrico Z  
 copper – wood - oil painting - 85x85x2 - **50.502**  
**limited edition 12 pcs**



^ **FORZA**  
 wall sculpture - artwork by Enrico Z  
 brass – copper - acrylic on wood - 50x60x4 - **50.503**  
**limited edition 12 pcs**



^ **IL SOLE**  
 wall sculpture - artwork by Enrico Z  
 brass – copper -white bronze – wood - 39x28 h 8 - **50.505**  
**limited edition 9 pcs**

**EDITION 2025**



ZANETTO  
HANDMADE IN ITALY

ZANETTO  
HANDMADE IN ITALY

ZANETTO  
HANDMADE IN ITALY

contact

**Zanetto 1963 snc**  
di Enrico Zanetto & C.

Via Ciro Menotti, 9  
35020 Albignasego (pd)  
Italy

tel. 0039 049 710204  
fax 0039 049 8625466  
email: [info@zanetto.com](mailto:info@zanetto.com)

[www.zanetto.com](http://www.zanetto.com)







# ZANETTO

HANDMADE IN ITALY

[www.zanetto.com](http://www.zanetto.com)